

Jagdpanther - Late

Assembly Instructions

General Instructions

The concept behind a Field of Armor model kit is one in which you bend metal at pre-cut areas to form the various parts of a vehicle or tank.

When these parts are bent into place tabs and corresponding holes will line up allowing pop rivets or screws to be inserted to hold the assembly together.

All metal parts will follow this basic method of bending and fastening in order to take the metal parts from a 2D state into a 3D part

1. Check that you have received all parts for your new 1/6 scale model of the Jagdpanther - Late. Go to Field of Armor's website at "www.fieldofarmortanks.com" for a complete list of all parts.
2. Wipe down all metal parts with a laquer thinner or acetone solution- Make sure when doing so that there are open flames or embers that may cause a fire while doing this.
3. At certain stages of assembly you may want to pre-paint some areas so that you don't have to dis-assemble parts of your work later. For example all the running gear pieces, the Chassis side wall they install against and the well under the fenders. **NOTE:** DO NOT paint any surface that you will be gluing something to.
4. Effort should be taken not to lose any of the perforated metal pieces that remain in the flat metal structures (please note that some of these pieces may have come loose during shipping) as some are used as actual parts such as hatches and doors and some are to remain in place.
5. Any additional parts and materials over and above those listed in the parts section of these Instructions and that may be obvious in the instruction photographs are the responsibility of the purchaser.
6. Should you receive a chassis that has come apart during shipping or comes apart from bending and re-bending (the seams are designed to be bent several times before coming apart but always bend the along the seams slowly as to not over heat the stitching) do not be too concerned as it can be easily repaired by using some scape 20 gauge metal cut into strips approximately ½ " x 2" - 2½" long. Bend the strip to 90 degrees or to suit the angle being repaired and drill 1/8" holes to accept Pop Rivets. Place the angle over the area to be repaired spaced at 4" - 6" intervals and drill matching holes in the metal pieces being repaired. Secure with Pop Rivets. See Figures 6a, 6b and 6c below.

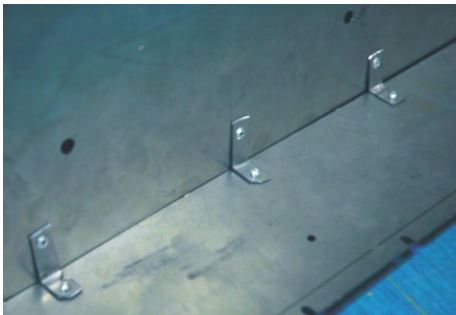


Figure 6a

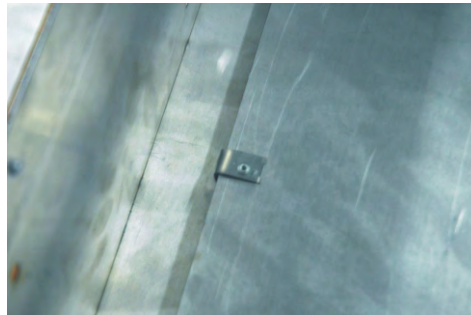


Figure 6b

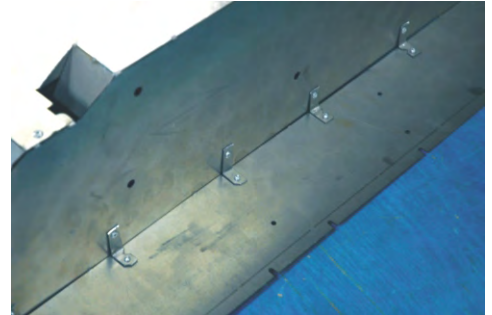


Figure 6c

Jagdpanther - Late

Assembly Instructions

General Instructions

7. Fill any holes and gaps with Bondo. Remove excess Bondo from surfaces using an exacto knife blade or something similar once it has set up but not hardened completely. When the Bondo has hardened sand smooth with a fine grit sandpaper.
8. It is recommended that the modeler use Super-glue when gluing Resin or Plastic Parts to other Resin or Plastic parts. When gluing Resin or Plastic Parts to Metal make sure that the Metal is free of grease and/or oil and glue using Epoxy.
9. Some Resin parts when they come out of the molds tend “naturally” to take on a slight curve - should you encounter any such parts in your kit this can be eliminated by applying moderate heat and adjusting the part to its proper configuration.
10. For handles (not provided) to Engine Access Doors, Commander’s Hatch (Cupola), Combat Compartment Access Doors and top of Superstructure Access Hatches it is suggested the modeler drill holes in the metal (in the approximate location shown in the photographs) to accept a bent 1/16th inch copper wire and secure in place with Epoxy (See Figure A).



Figure A

11. Using a piece of scrape metal it is advisable to create a stop for the Engine Access Doors , Combat Compartment Access Doors and top of Superstructure Access Hatches and the Brake Access Covers by Pop Riveting it to the underside of the opening and protruding into the opening (see Figure B). On larger doors (i.e. Engine Cover Deck Doors) or those that don’t seat properly you may want to create a stop on the two sides of the opening as well.

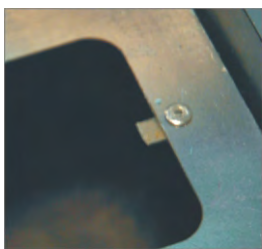


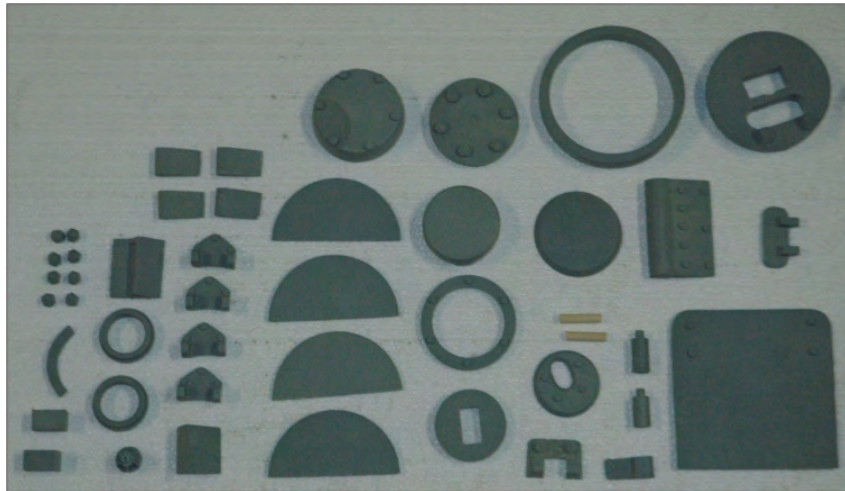
Figure B

12. Some parts will require sanding before application.
13. Sand the metal surface area to which a part is to be applied and also when securing metal to metal. This will ensure a more secure bond.
14. All references to left and right assumes you are sitting in the tank facing forward.

Jagdpanther - Late Parts

Bag 1 Contents (26 Parts - 46 Pieces)

Note : Quantity of part indicated in ()



(1) Commander's
Periscope Housing
BRA004-401R



(1) Commander's
Periscope Housing
Ring
BRA004-402R



(1) Commander's
Periscope Housing
Hatch Cover
BRA004-403R



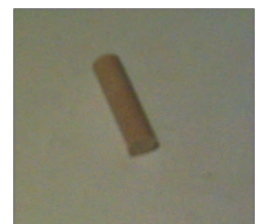
(1) Rear Hatch
BRA004-404R



(1) Rear Hatch
Hinge Plate
BRA004-405R



(2) Rear Hatch
Hinge Plate Pin
BRA004-406R



(2) 1/4\" x 1\" Wood
Dowel Rear Hatch
Hinge Plate
Extension Pin
BRA004-407R



(1) Ventilator
BRA004-408R



(1) Ventilator Top
BRA004-409R



(1) Vent Hole
Cover
BRA004-410R



(1) Small Rear
Hatch
BRA004-411R



(1) Small Rear
Hatch Hinge
Piece A
BRA004-412R



(1) Small Rear
Hatch Hinge
Piece A
BRA004-413R



(4) Commander's/
Loader's Hatch
BRA004-414R



(4) Commander's/
Loader's Hatch
Hinge Piece A
BRA004-415R



(4) Commander's/
Loader's Hatch
Hinge Piece B
BRA004-416R



(1) Rotating
Periscope
BRA004-417R

Jagdpanther - Late Parts

Bag 1 Contents (25 Parts - 46 Pieces) (Continued)

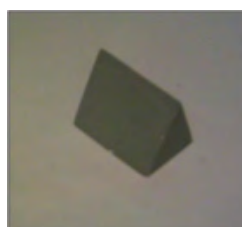
Note : Quantity of part indicated in ()



(1) Rotating
Periscope Bolt
Detail
BRA004-418R



(1) Close In
Defense Port
BRA004-419R



(1) Antennae Base
BRA004-420R



(1) Antennae Mount
BRA004-421R



(2) Sliding
Periscope Blocks
BRA004-422R



(2) Barrel Step
Down Ring
BRA004-423R



(1) Driver's Visor
BRA004-424R



(8) Mantlet Bolt
BRA004-425R



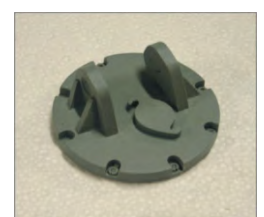
(1) Periscope Slide
Guide
BRA004-426R

Bag 2 Contents (9 Parts - 12 Pieces)

Note : Quantity of part indicated in ()



(2) Drive Gear Hub
BRA003-406R



(1) Back Tow Plate
BRA003-414R



(1) Final Drive
Cover - Left
BRA003-415R



(1) Final Drive
Cover - Right
BRA003-416R



(2) Track Alignment
Wheel
BRA003-417R



(1) Engine Deck
Vent
BRA003-420R



(1) Engine Deck
Round Cover - Large
BRA003-421R



(1) Engine Deck
Round Cover -Small
BRA003-422R

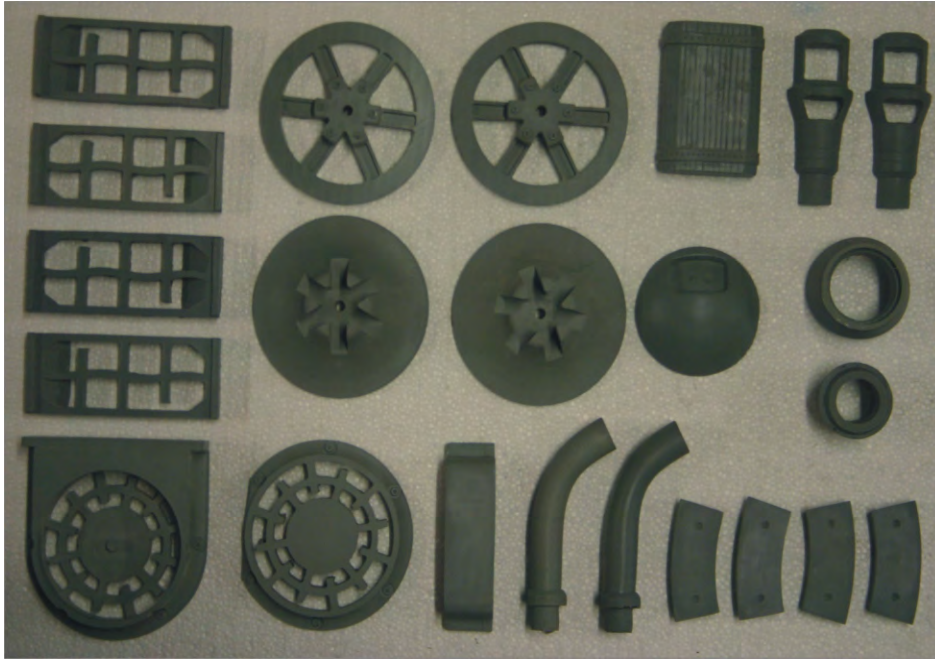


(2) Engine Deck
Round Cover -Flat
BRA003-423R

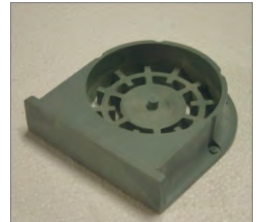
Jagdpanther - Late Parts

Bag 3 Contents (10 Parts - 17 pieces)

Note : Quantity of part indicated in ()



(4) Engine Intake Grill
BRA003-430R



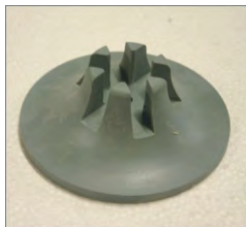
(1) Raised Engine Grill
BRA003-431R



(1) Raised Engine Vent Side Block
BRA003-432R



(1) Engine Vent
BRA003-433R



(2) Idler Wheel Inner
BRA003-434R



(2) Idler Wheel Outer
BRA003-435R



(1) Hull Machine Gun Mount
BRA003-444R



(1) Jack Block
BRA003-445R



(2) Muffler Pipe
BRA003-446R



(2) Muzzle Break
BRA003-448R

Jagdpanther - Late Parts

Bag 4 Contents (23 Parts - 47 pieces)

Note : Quantity of part indicated in ()



(4) Hinge Half
(Male)
BRA005-434R



(4) Hinge Half
(Female)
BRA005-435R



(1) Fire Extinguisher
BRA003-405R



(4) Tow Shackle
BRA003-410R



(4) Tow Shackle Pin
BRA003-411R



(2) Engine Hatch
Hinge Base
BRA003-424R



(2) Engine Hatch
Hinge Arm
BRA003-425R



(3) Track Tension
Access Cover - Large
BRA003-436R



(1) Access Cover -
Small
BRA003-437R



(1) Rear Thickening
Plate - Left
BRA003-451R



(1) Rear Thickening
Plate - Right
BRA003-452R



(2) Rear Thickening
Plate - Lower
BRA003-453R



(1) Barrel Elevation
Rotate Piece
BRA003-456R



(1) 1/4" x 2 1/2" Bolt
and 1/4" Nut
BRA003-457R



(2) Front Thickening
Plate Lower
BRA003-460R



(2) Front Thickening
Plate - Upper
BRA003-461R



(3) Tripod Mount
BRA003-462R



(1) Tow Pin
BRA003-464R



(1) Head Light
BRA001-636R



(1) Headlight
Bracket
BRA001-637R



(1) Hull Machine
Gun
BRA001-439R



(4) Periscope Cover
BRA002-408R

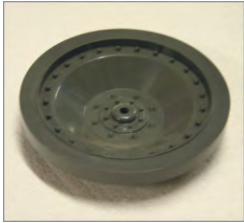


(1) Periscope
BRA002-405R

Jagdpanther - Late Parts

Bag 5 Contents (1 Part - 16 Pieces)

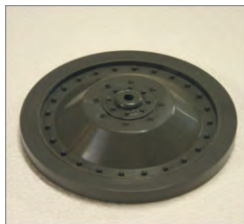
Note : Quantity of part indicated in ()



(16) Road Wheel
BRA003-601IP

Bag 6 Contents (1 Part - 16 Pieces)

Note : Quantity of part indicated in ()



(16) Road Wheel
BRA003-601OP

Bag 7 Contents (1 Part - 156 Pieces)

Note : Quantity of part indicated in ()



(156) Tack Pin
BRA003-901P

Bag 8 Contents (1 Part - 168 Pieces)

Note : Quantity of part indicated in ()



(168) Track Link
BRA003-902P

Bag 9 Contents (3 Parts - 4 Pieces)

Note : Quantity of part indicated in ()

Jagdpanther - Late Parts

Bag 9 Contents (3 Parts - 4 Pieces)

Note : Quantity of part indicated in ()



(1) Collar
BRA004-501P



(1) Collar Insert
BRA004-502P



(1) Mantlet
BRA004-503P

Jagdpanther - Late Parts

Bag 10 Contents (1 Part - 1Piece)

Note : Quantity of part indicated in ()



(1) Barrel
BRA004-501T

Bag 11 Contents (1 Part - 1Piece)

Note : Quantity of part indicated in ()



(1) Storage Tube
BRA003-502T

Bag 12 Contents (2 Parts - 4 Pieces)

Note : Quantity of part indicated in ()



(2) Drive Sprocket -
Inner
BRA003-730M



(2) Drive Sprocket -
Outer
BRA003-731M

Bag 13 Contents (1 Part - 1 Piece)

Note : Quantity of part indicated in ()

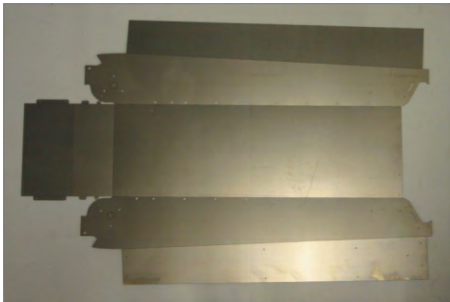
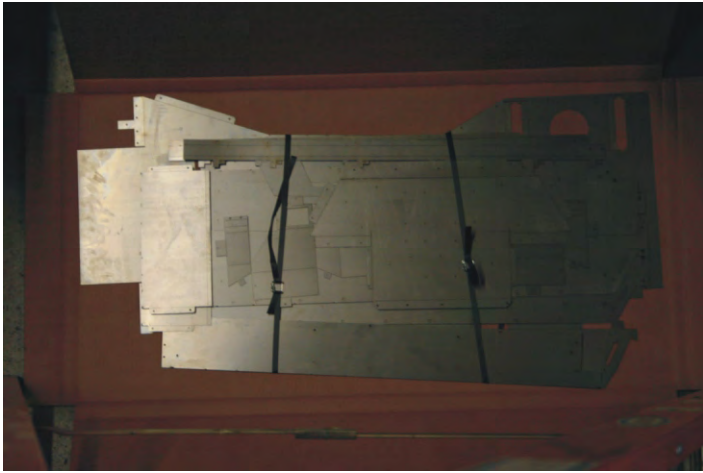


(1) Instruction CD
BRA004-ICD

Jagdpanther - Late Parts

Bag14 Contents (12 Parts - 13 Pieces)

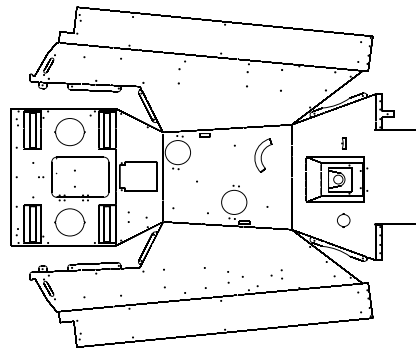
Note : Quantity of part indicated in ()



(1) Hull
BRA004-701M



(1)Hull Back
Plate
BRA004-702M



(1) Superstructure
BRA004-703M



(1) Lower Rotate
Guide Support
BRA004-711M



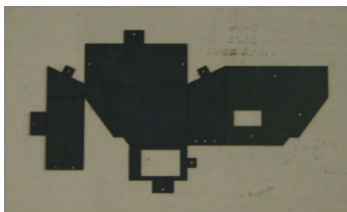
(1)Side Shield
Rail - Left
BRA004-712M



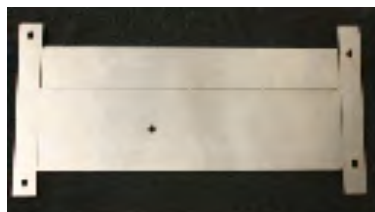
(1) Side Shield
Rail - Right
BRA004-713M



(1) Barrel Rotation
Bracket
BRA004-714M



(2) Storage Bin
BRA003-718M



(1) Barrel Rotation Assembly
Brace
BRA004-719M



(1) Rear Deck Brace
BRA003-723M

Jagdpanther - Late Parts

Bag 15 Contents 23 Parts - 38 Pieces)

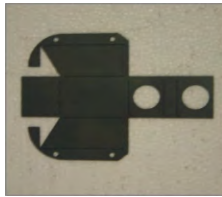
Note : Quantity of part indicated in ()



(1) Fender -
Left
BRA003-706M



(1) Fender -
Right
BRA003-707M



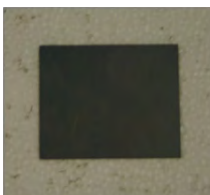
(2) Muffler Cover
BRA003-715M



(2) Muffler
Bracket
BRA003-746M



(1) Fender Sides -
Two (2) Pieces
BRA003-717M



(2) Storage Bin
Lid
BRA003-720M



(8) Drive
Sprocket Spacer
BRA003-732M



(1) Jack Block
Bracket
BRA003-735M



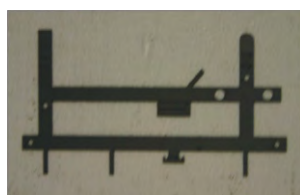
(1) Track Cable
Bracket
BRA003-736M



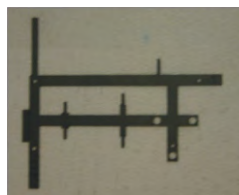
(1) Left Pry Bar
Bracket
BRA003-737M



(1) Right Pry Bar
Bracket
BRA003-738M



(1) Axe Bracket
BRA003-739M



(1) Shovel Bracket
BRA003-740M



(2) Extra Track
Bracket
BRA003-741M



(1) Upper Periscope
Track
BRA004-760M



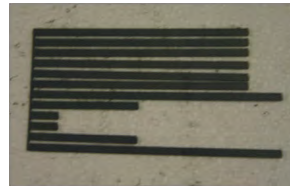
(2) Storage Tube
Bracket
BRA003-742M



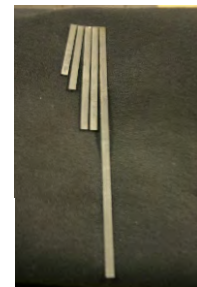
(2) Rear Tow Cable
Bracket - Two (2)
Pieces
BRA003-743M



(2) Turret Loader's
Hatch Bracket
BRA003-744M



(1) Fender and Storage
Bin Ribs - One (1) set
BRA003-745M



(1) Fender & Storage
Bins Ribs
BRA004-761M

Bag 16 Contents (4 Parts - 4 Pieces)

Note : Quantity of part indicated in ()



(2) Side Shield
Type A
BRA003-708M



(2) Side Shield
Type B
BRA003-709M

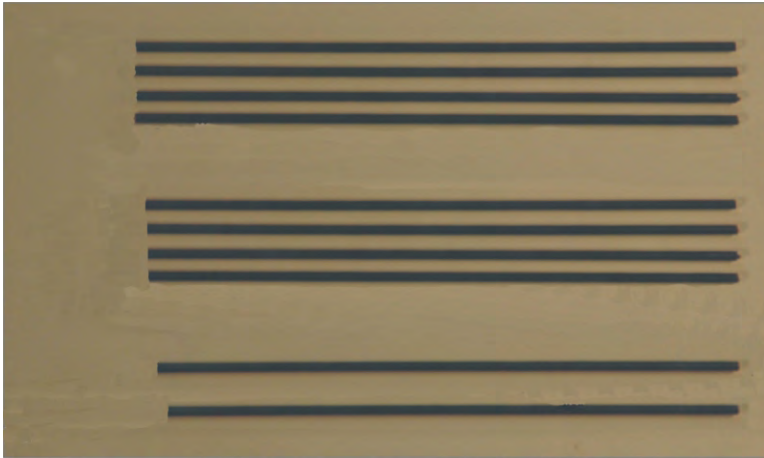


(6) Side Shield
Type C
BRA003-710M

Jagdpanther - Late Parts

Bag17 Contents (4 Parts - 10 Pieces)

Note : Quantity of part indicated in ()



19 11/16" Main Axle #1 - 4 Pieces - BRA003-801M

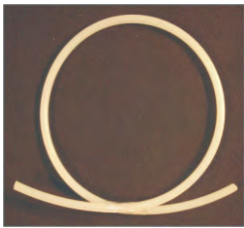
19 7/16" Main Axle #2 - 4 Pieces - BRA003-802M

19 3/16" Drive Axle - 1 Piece - BRA003-803M

19 5/16" Idler Wheel Axle - 1 Piece - BRA003-804M

Bag 18 Contents (1 Part - 1 Piece)

Note : Quantity of part indicated in ()



(1) Spacer Material - 40" Length
BRA003-806T

Bag 19 Contents (1 Part - 22 Pieces)

Note : Quantity of part indicated in ()



(22) 1/4" Push Nut
BRA001-807M

Bag 20 Contents (1 Part - 240 Pieces)

Note : Quantity of part indicated in ()

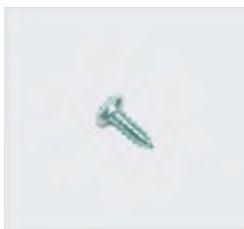


(240) 1/8" x 5/16"
Aluminum Pop Rivets
BRA001-809M

Jagdpanther - Late Parts

Bag 21 Contents (1 Part - 20 Pieces)

Note : Quantity of part indicated in ()

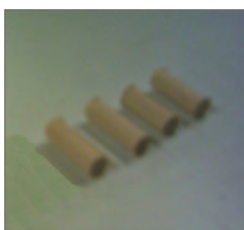


(20) #6 1/2" (Sheet Metal)

BRA001-810M

Bag 22 Contents (1 Part - 4 Pieces)

Note : Quantity of part indicated in ()



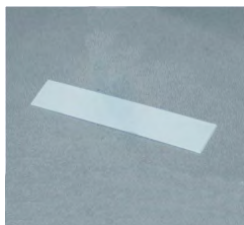
(4) 1/4" x 1/2" long

Wooden Dowel

BRA003-805W

Bag 23 Contents (1 Part - 1 Piece)

Note : Quantity of part indicated in ()



1 3/4" x 3 3/4" x 1/16"

Styrene

BRA003-811P

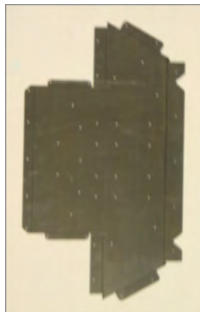
Jagdpantther - Late Assembly Instructions

Hull and Storage Bins

Step 1. Locate metal Hull and the metal Hull Back Plate. See Figure 1a and 1b.



(1) Hull
BRA003-701M



(1)Hull Back
Plate
BRA003-702M

NOTE: In the earlier production models the Hull Back Plate was an integral part of the Hull.

Figure 1a

Figure 1b

Step 2. Making sure the square hole in the Hull Back Plate is to the left side of the tank, slide the bottom flange under the Hull and align the five (5) holes (see Figure 2a). Secure it in place using Pop Rivets (see Figure 2b).

NOTE: In the earlier production models the Hull Back Plate was an integral part of the Hull and so this Step can be ignored if you have an early production model.

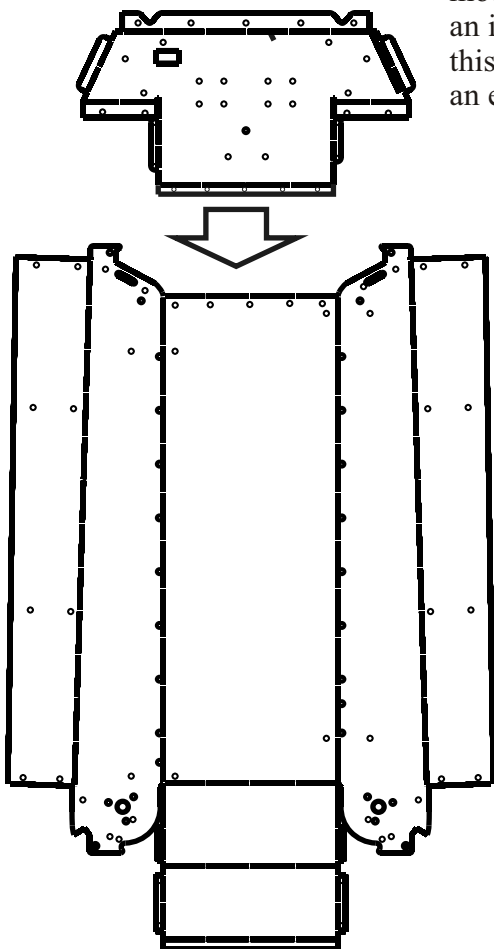


Figure 2a

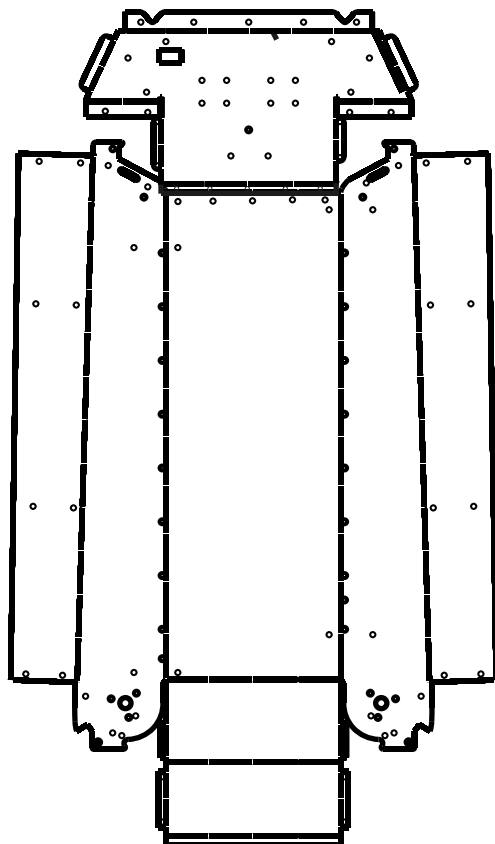


Figure 2b

Jagdpantner - Late

Assembly Instructions

Hull and Storage Bins

Step 3. Bend all the Tabs indicated in Figure 3a below in accordance with the Note 1. Bend the Rear Plate and the Front Hull Plate up at the bend lines and secure with Pop Rivets in accordance with Note 2. Locate the outer Panels and bend them back 90 degrees toward the inside of the Hull in accordance with Note 3. It is important that the tabs at the low part of the Rear Hull Panel lap over on top of the Outer Panels (see Figure 4a).

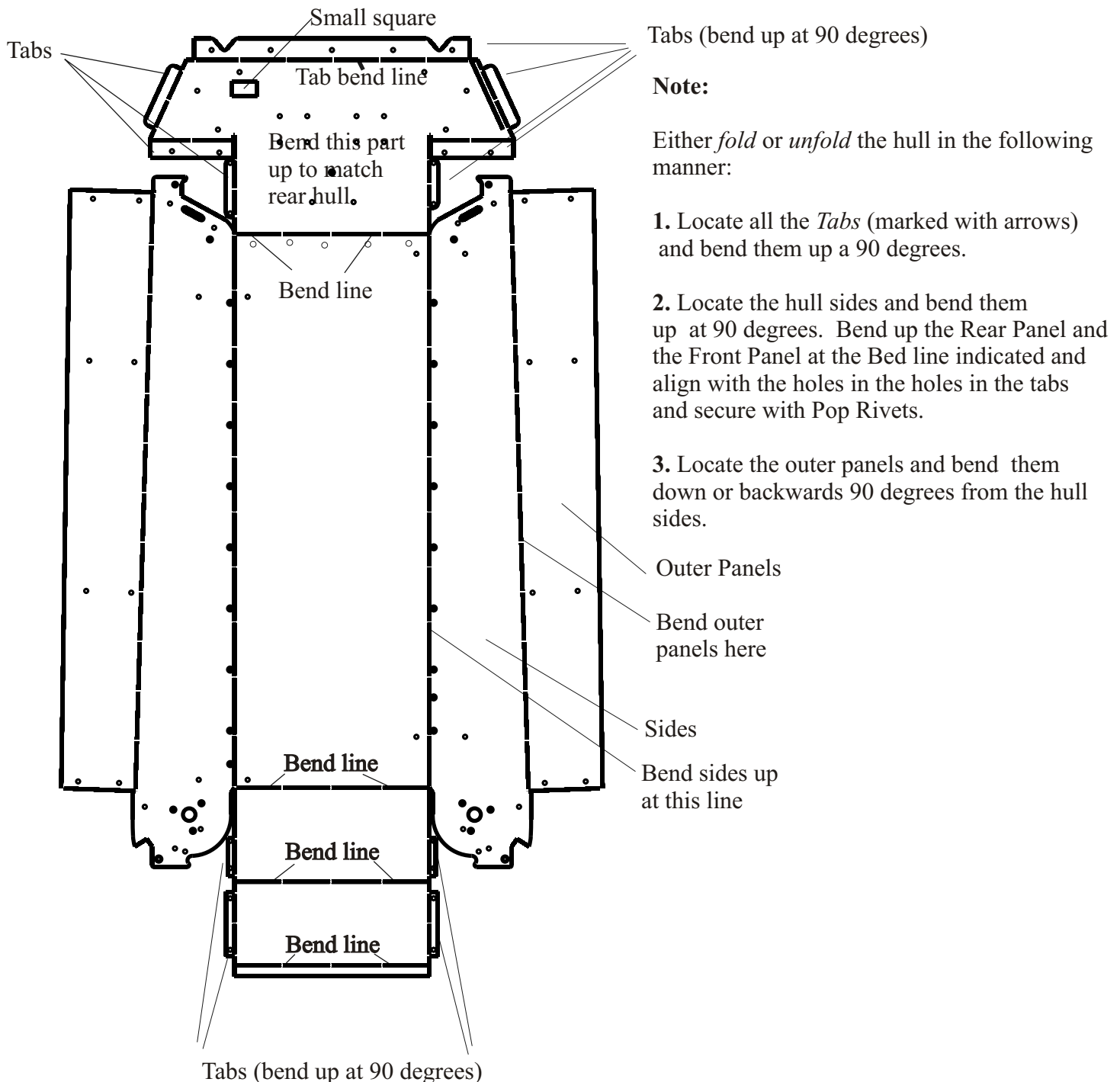


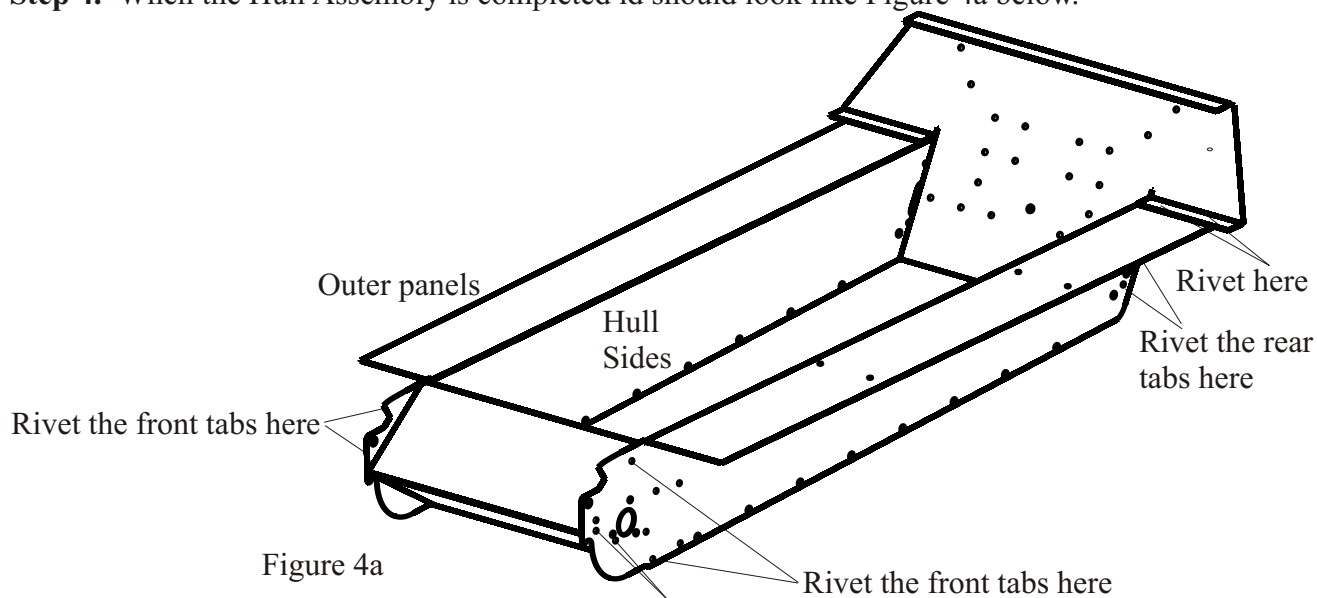
Figure 3a

Jagdpanther - Late

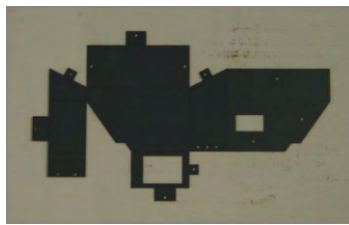
Assembly Instructions

Hull and Storage Bins

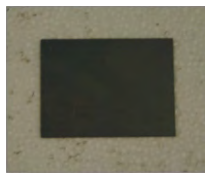
Step 4. When the Hull Assembly is completed it should look like Figure 4a below.



Step 5. Locate the two (2) Storage Bins and the two (2) Storage Bin Covers and note the identification of surfaces in Figure 5a. NOTE: STEPS 5 THROUGH 7 ARE FOR THE RIGHT SIDE STORAGE BIN - FOR THE LEFT SIDE STORAGE BIN SEE STEP 8.



(2) Storage Bin
BRA003-718M



(2) Storage Bin Lid
BRA003-720M

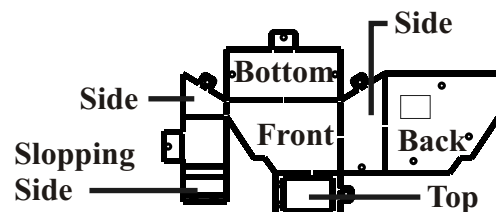
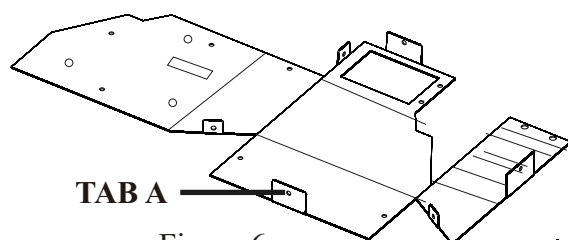
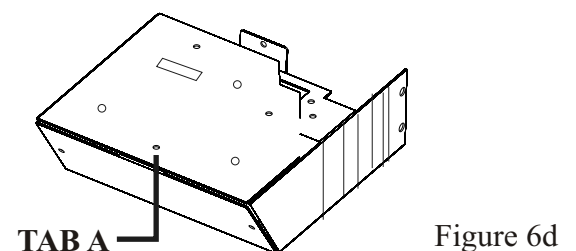
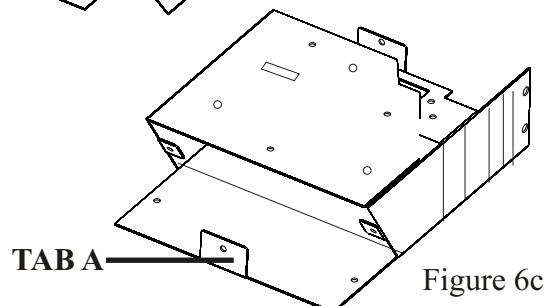
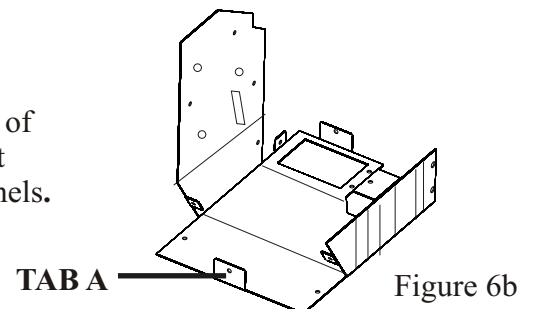


Figure 5a

Step 6. On one Storage Bin, with the exception of TAB A bend the Tabs up to 90 degrees (see Figure 6a). Bend TAB A approximately 110 degrees. Bend the Sides up to 90 degrees (see Figure 6b). Bend the back over to 90 degrees and align the holes with the tab on the other side (see Figure 6c) and secure with Pop Rivets. Bend the Bottom up so that TAB A slides under the Back (see Figure 6c). Align the three holes and secure with Pop Rivets (see Figure 6d)



NOTE: Adjust angles of tabs and panels to meet and match adjacent panels.



Jagdpanther - Late Assembly Instructions

Hull and Storage Bins

Step 7. Fold the Sloped Side to match the profile of the front and back (see Figure 7a). Fold the Top over 90 degrees so the Tab slips under the Back (see Figure 7b) and the end of the top with the holes in it is over the top of the Sloped Side. Align the holes and secure with Pop Rivets (see Figure 7c). When completed the Storage Bin should look like the one in Figure 7d.

NOTE: Some models come with only one Storage Bin having the Square Hole in the Back. In this instance this Storage Bin is to be installed on the Right Side of the tank to align with the Square Hole in the Rear Panel.

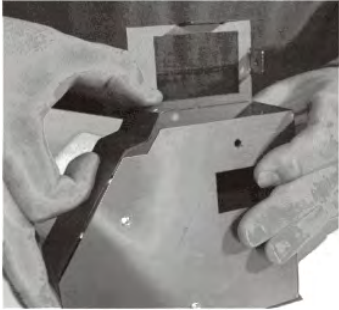


Figure 7a

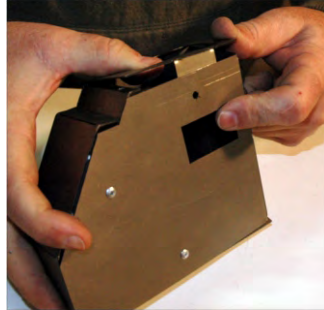


Figure 7b



Figure 7c

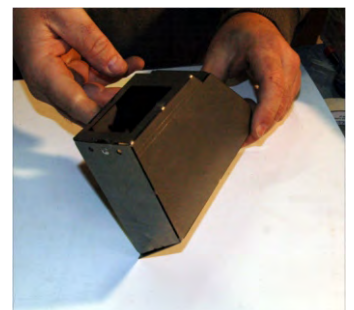


Figure 7d

Step 8. You have now created the Storage Bin for the Right side of the tank. You must now create the storage Bin for the Left side and you do that creating the mirror image of the Right Storage Bin which means bending the second storage Bin piece in the opposite directions to the one you have just completed and following Steps 5 through 7.

Step 9. Locate the four (4) Hinge Halves (Male) and Hinge Halves (Female) and create four (4) Hinge Assemblies (see Figure 8a).



(4) Hinge Half
(Male)
BRA005-434R



(4) Hinge Half
(Female)
BRA005-435R



Hinge Assembly
Figure 9a

Step 9. Attach the Bin Lid to the Storage Bin using two (2) Hinge Assemblies



Figure 9a



Figure 9b

NOTE: On the earlier iterations of the Panther Ausf G the hinge configuration for the installation of the of Storage Bin Lid will be as shown in Figure 9b

Jagdpantther – Late Assembly Instructions

Hull and Storage Bins

Step 10. Locate the Fender and Storage Bin Ribs Piece. Break off the six (6) pieces that are the ribs for the Storage Bins (see NOTE below). Secure the Ribs to the Storage Bins in the configuration shown in Figure 10a using Epoxy



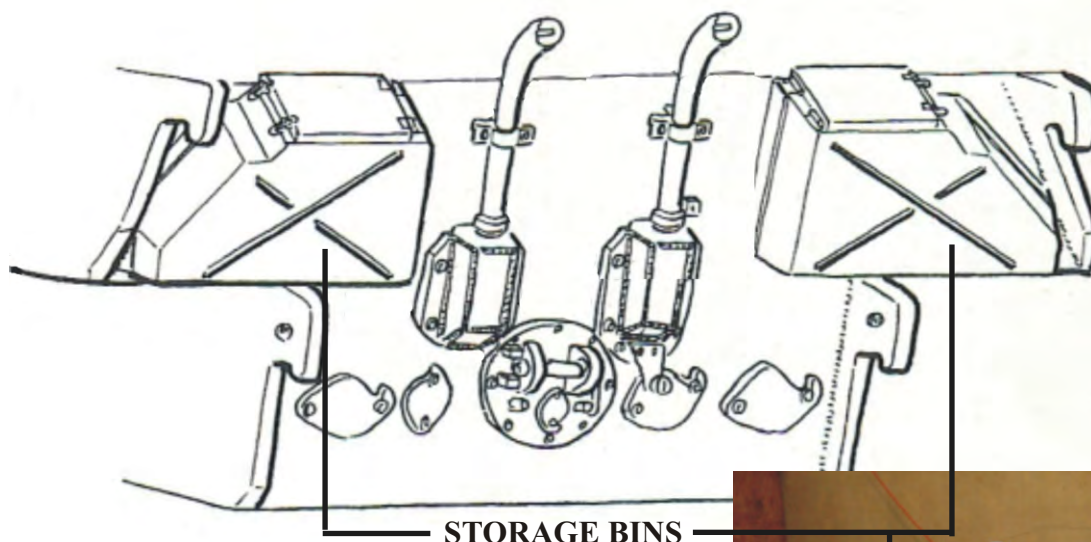
NOTE: Install the six detail strips (ribs) contained within the box on the Left to the Storage Bins as shown in Figure 10a to the Right.

(1) Fender and Storage Bin Ribs - One (1) set
BRA003-745M

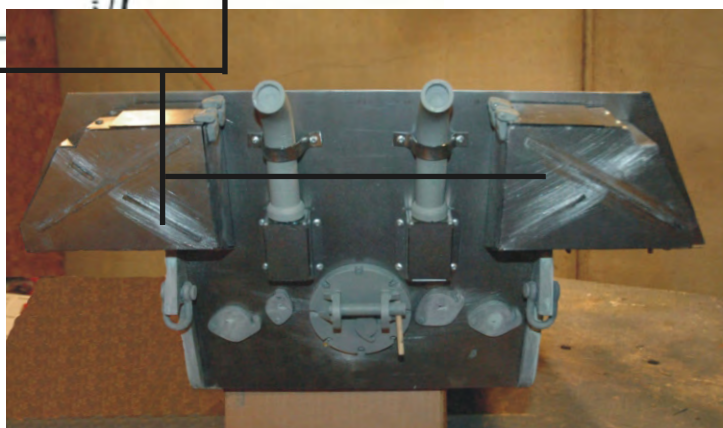


Figure 10a

Step 10. Install the Storage Bins to either side of the Rear Panel. Align the holes in the Rear Panel with those in the Storage Bin and secure with Pop Rivets. You will note the oversized holes in the Rear Panel. They are there to accommodate the Rivets that have been installed to secure the Storage Bin together in Step 7.



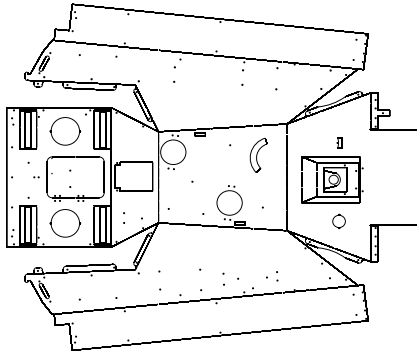
NOTE: Some models come with only one Storage Bin having the Square Hole in the Back. In this instance this Storage Bin is to be installed on the Right Side of the tank to align with the Square Hole in the Rear Panel.



Jagdpanther - Late Assembly Instructions

Superstructure

Step 1. Locate the Upper Deck Piece (see Figure 1a). This piece will come folded in the kit and when opened and laying flat it would look like the figure below.



(1) Upper Deck
BRA004-703M

Figure 1a

NOTE: view is of the top of the Upper Deck laying flat. The Upper Deck that comes to you in the kit is with the top side facing down and the sides folded in (see Figure 1a). You do NOT need to open the Superstructure and fold it down flat to begin assembly. Some of the photographs in this sequence however may show the starting from the flat position.

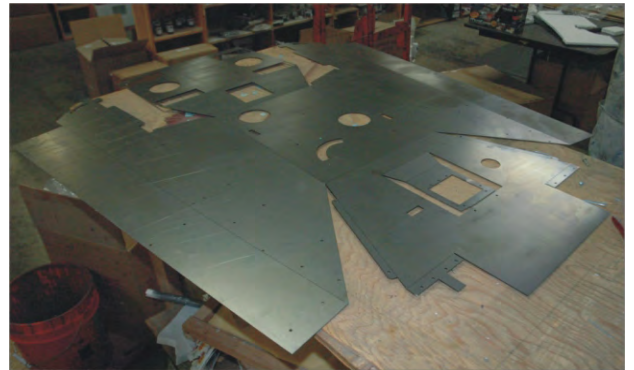


Figure 1a

Step 2. You will not that one side we will call that Side A is folded over and the other side, Side B, has only a side panel folded over (see Figure 2a). Before unfolding this piece bend the Tabs on the Front Panel to approximately 45 degrees (see Figure 2b) as well as the tabs on the rear of the Side Panels (see Figure 2c). You may have to fold Side A up to be able to accomplish the folding of the rear tabs on that Side Panel. Fold Side A up and outward to approximately 120 degrees. If you are working alone you will need to support the side temporarily.

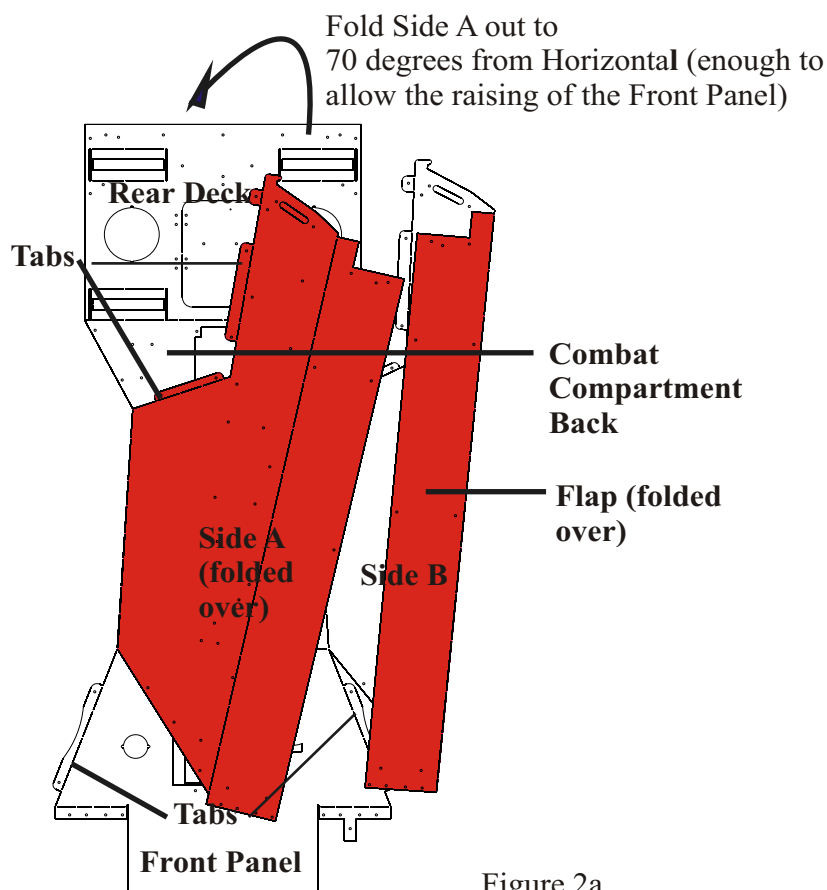


Figure 2a

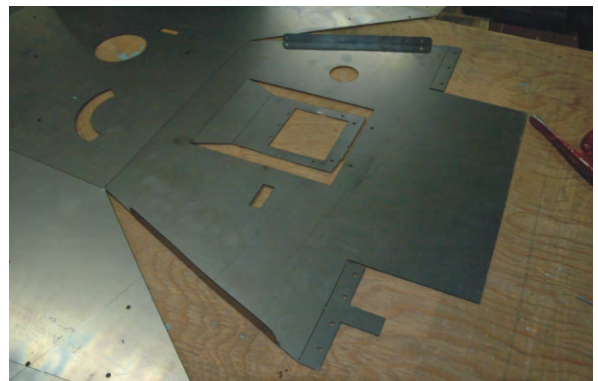


Figure 2b



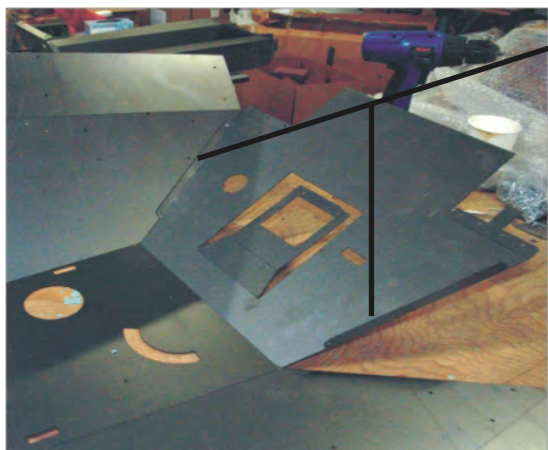
Figure 2c

Jagdpanther - Late

Assembly Instructions

Superstructure

Step 3. Raise up the front panel and align the holes in the tabs with the hole in Side Panel A (see Figure 3a). Secure the Front Panel and Side Panel A with Pop Rivets. Raise the flap on Side B enough to allow you to fold Side B upward until the holes in the Tabs on Side Panel B align with the holes in the Front Panel and secure in place with Pop Rivets.).



Fold the front panel and the side panels together and secure with Pop Rivets

Figure 3a

Step 4. Raise the Rear Deck up and bend it inward along the seam between the Rear Deck and the combat compartment back (see Figure 3a). Shift the panel into position and align the holes in the Rear deck with the holes in the Side Panels and secure with Pop Rivets (see Figures 4a and 4b).

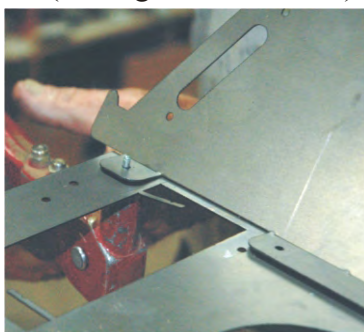


Figure 4b

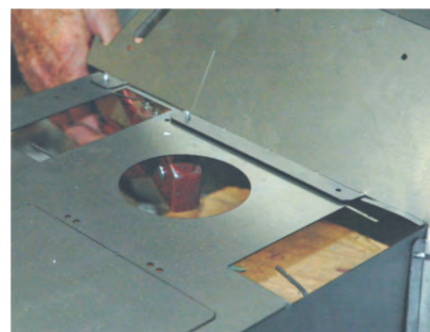


Figure 4c

Figure 4a

Step 5. Fold the Flaps on both sides into the position shown in Figures 5a and 5b.



Figure 5a

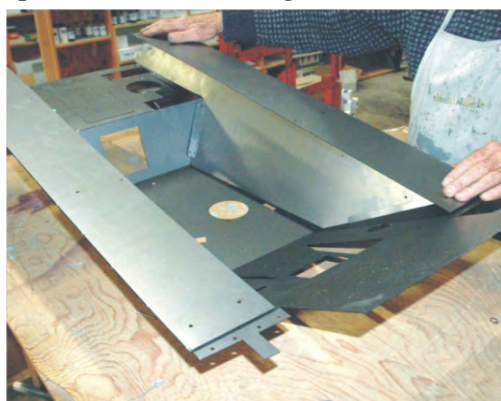


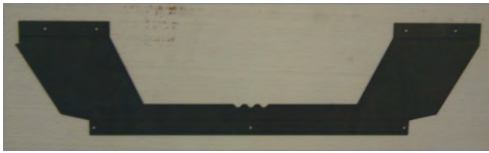
Figure 5b

Jagdpanther - Late

Assembly Instructions

Superstructure

Step 5. Locate the Rear Brace and bend it to the configuration shown in Figure 5a..



(1) Rear Deck Brace
BRA003-723M

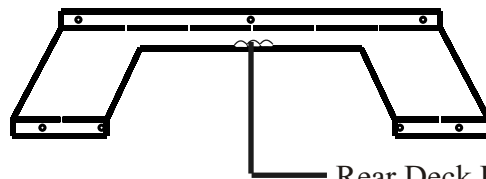


Figure 5a

Bend to this
shape

Rear Deck Brace (three notches
located here)

Step 6. Slide the Rear Deck Brace under the Side flaps at the rear of the Superstructure and position the brace so the holes in the Rear Deck and Side Panel Flaps align with the those in the Rear Deck Brace. Secure with Pop Rivets (see Figures 6a and 6b).



Figure 6a



Figure 6b

Step 7. The barrel support and elevation rotate guide and bracket are partly integral to the Superstructure and additional parts that have to be installed. While the Superstructure is still upside down bend the integral portion of the barrel elevation Rotate Guide Support into the configuration shown in Figures 7a and 7b.

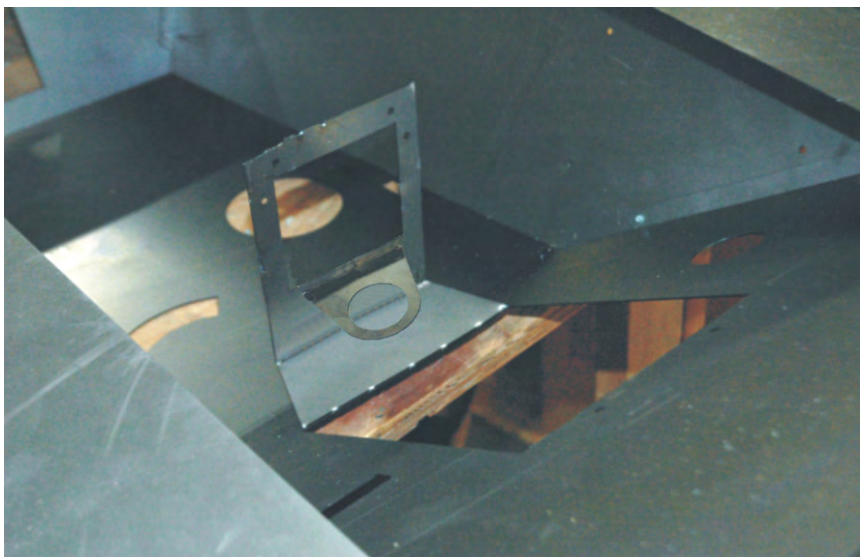


Figure 7a

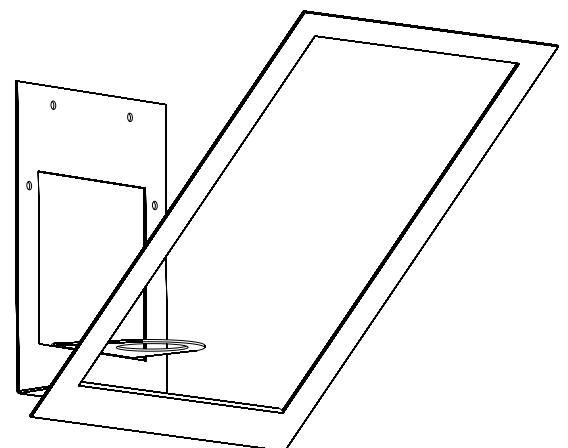


Figure 7b

Jagdpanther - Late

Assembly Instructions

Superstructure

Step 8. Locate the Lower Rotate Guide Support.



Figure 10a

(1) Lower Rotate
Guide Support
BRA004-711M

Step 9. Bend the Lower Rotate Guide Support to 90 degrees along the seam (see Figure 9a). Align the holes in the Support with those in the configured portion and secure with Pop Rivets (see Figures 9b).



Figure 9a

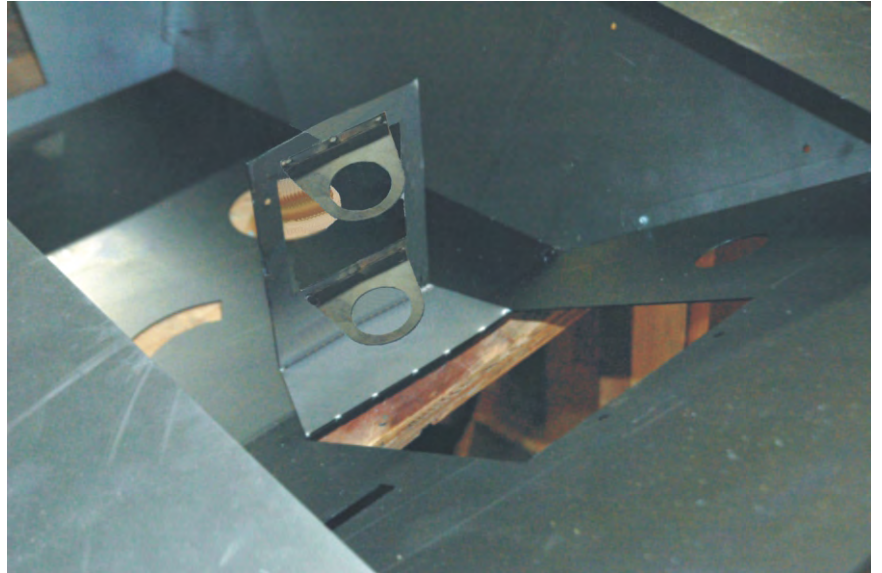


Figure 9b



(1) Barrel Rotation
Bracket
BRA004-714M



(1) Barrel Elevation
Rotate Piece
BRA003-456R



(1) 1/4" x 2 1/2" Bolt
and 1/4" Nut
BRA003-457R

NOTE: Please read Step 11 and 12 before completing Step 13.

Jagdpanther - Late

Assembly Instructions

Superstructure

Step 10. Bend the End tabs of the Barrel Rotation Bracket up 90 degrees then bend the tips of the End tabs over and inward to 90 degrees (See Figure 10b and 10c). Bend the Side tabs up (See Figure 10d). Insert the Barrel Elevation Piece (see Figure 10e). Align the holes in the Barrel Elevation Rotate Piece and the Barrel Elevation Piece and insert the 1/4" x 2 1/2" Bolt (see Figure 10e and Figure 10f). Twist on the 1/4" Nut and tight it down so that when the Barrel and Mantlet Assembly is installed that it moved up and down and remains in the position you have placed it after you take your hand away. See Figure 10g for the completed configuration.

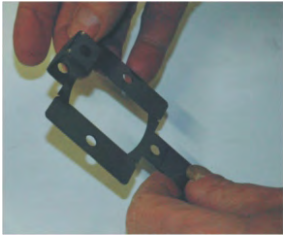


Figure 13a

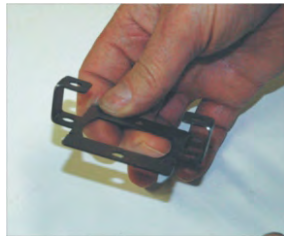


Figure 13b



Figure 13c

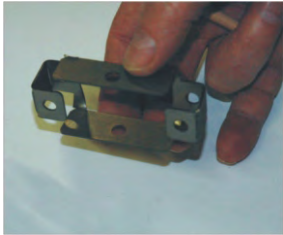


Figure 13d



Figure 13e



Figure 13f

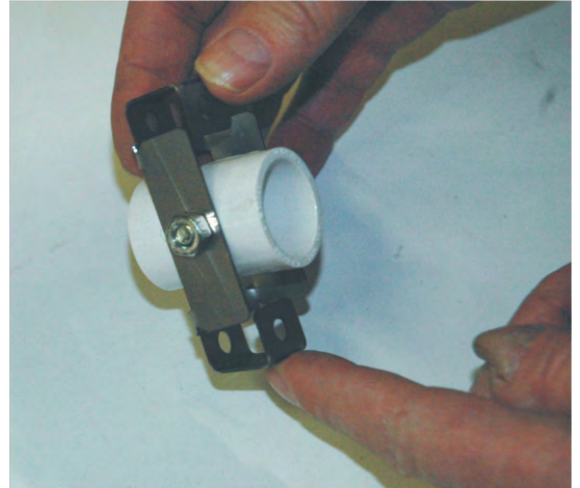


Figure 13g

Step 11. It is now time to install the Barrel Rotation Bracket Assembly into the Barrel Rotation Bracket Support (see Figure 11a). Slide the Barrel Rotation Bracket Assembly (there is no top or bottom) into top and bottom arms (with the holes in them) of the Barrel Bracket Support (see figure 11b). Using the Wooden Dowel Keepers, secure the Barrel Rotation bracket Assembly in place by sliding them horizontally through the holes, one above the top support arm (see Figure 11c) and one below the bottom support arm (see Figure 11d).



Figure 11a

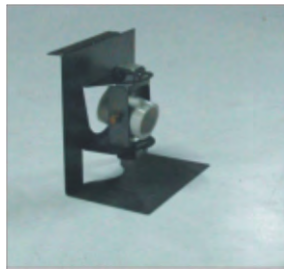
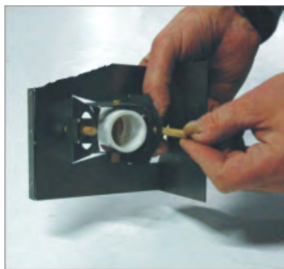
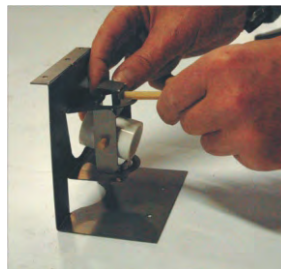


Figure 11b



Note: The photographs in Figures 11a, 11b, 11c and 11d are of the Stug IV but the assembly principle is the same.

Step 12. Locate the Barrel Rotation Assembly Brace.

Jagdpantther - Late

Assembly Instructions

Superstructure

Step 13. Still with the Superstructure turned upside down install the Barrel Rotation Assembly Brace by first bending it into the configuration as shown in Figure 13a and then attaching one end of the brace to the Superstructure itself by aligning the hole in the Brace with those in the Superstructure and then by attaching the other end to the integral part of the Barrel Rotation Assembly by aligning the holes therein with those in the Brace.

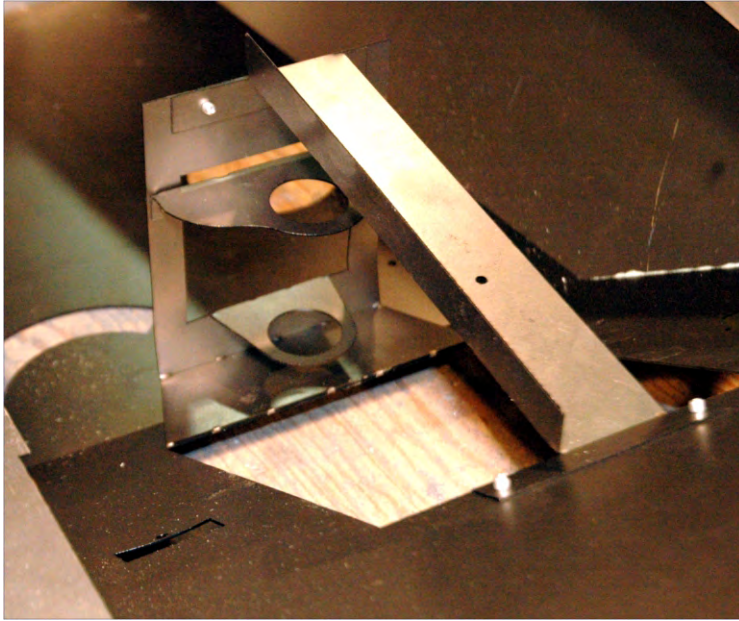


Figure 13a

Step 14. The Superstructure to this point should look as it does in figure 14a.

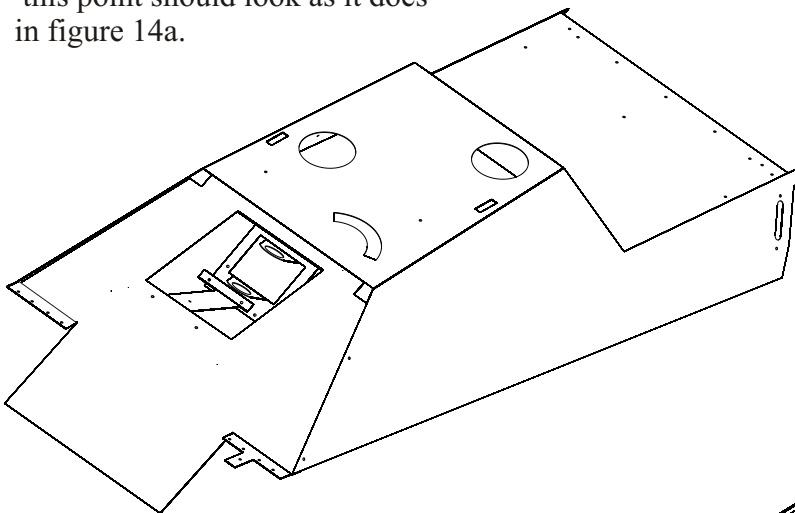
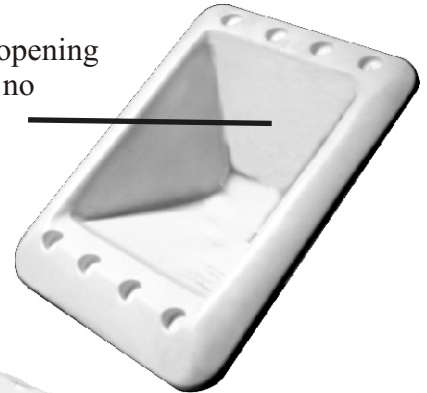


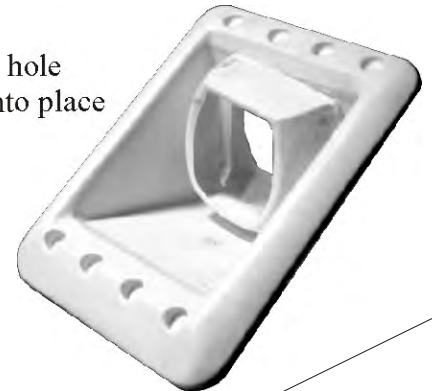
Figure 14a

Cut out an opening here that is no larger than the back of the piece below

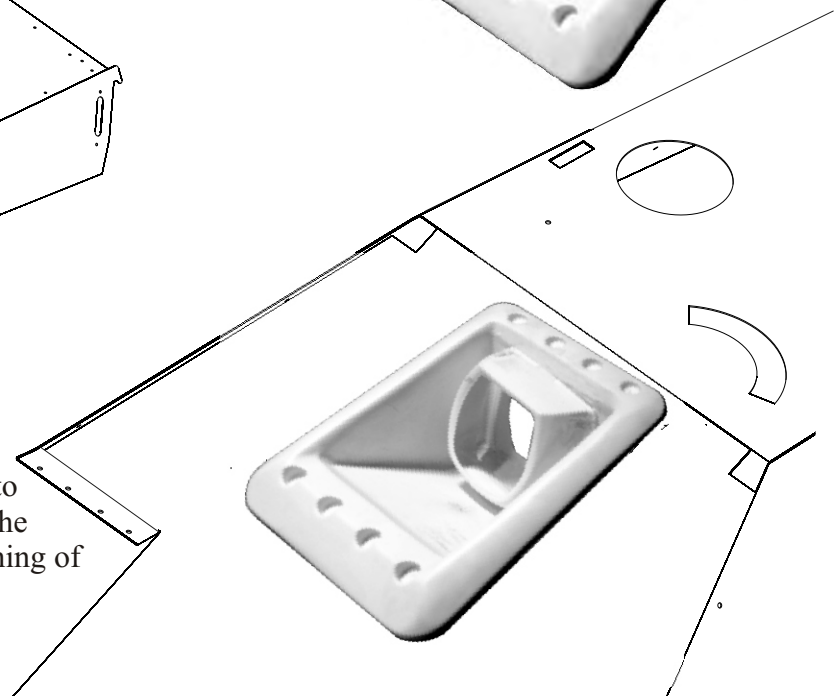


You may want to use this piece as a template for the hole to cut in above

After cutting the hole glue this piece into place as shown



Secure into place on the front opening of the tank



Jagdpanther - Late Assembly Instructions

Axles, Final Drive Cover, Track Alignment Wheel and Spacers

Step 1. Slide axles through the holes in the lower body (see Figure 1a and 1b).

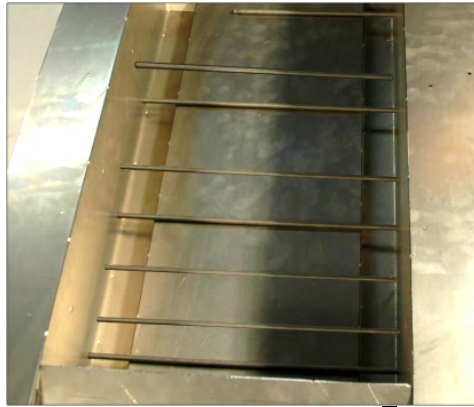
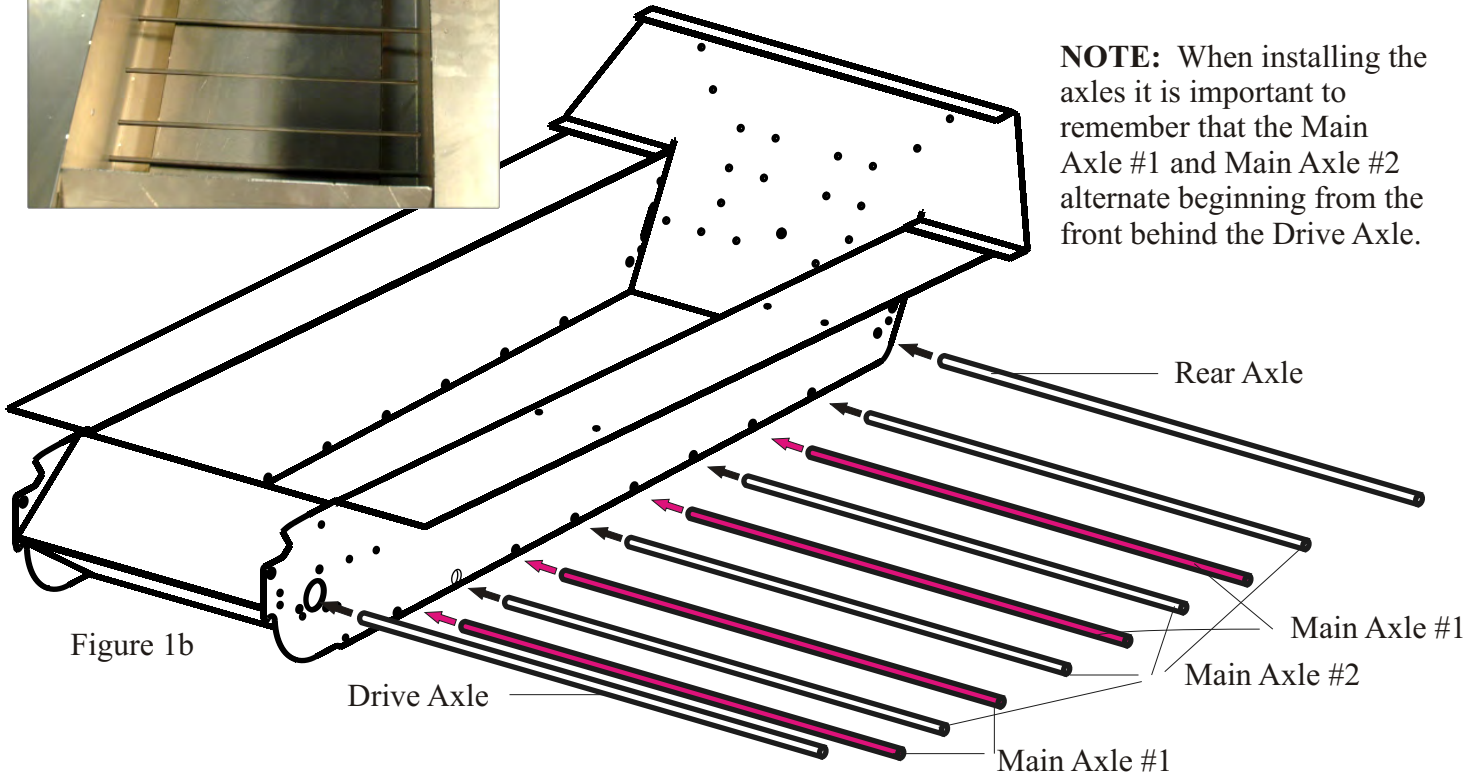
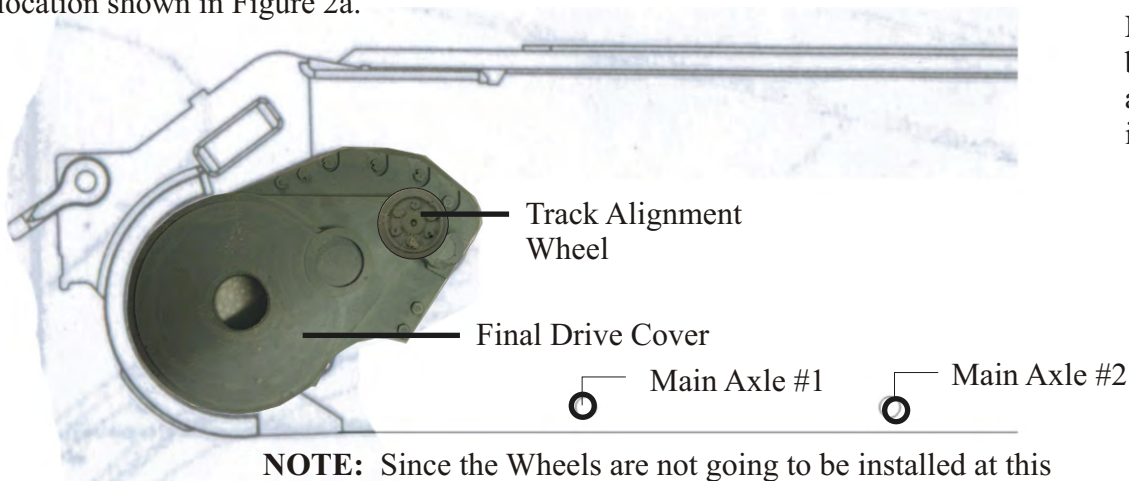


Figure 1a



NOTE: When installing the axles it is important to remember that the Main Axle #1 and Main Axle #2 alternate beginning from the front behind the Drive Axle.

Step 2. Locate the Final Drive Covers and install one on either side of the Hull. Hold the Final Drive Cover in place so that the Drive Axle hole is in the center of the hole in the Final Drive Cover (see Figure 2a) and mark the screw holes on the back. Pre-drill the Final Drive Cover for the screw and then secure in place with Epoxy and screws. Locate the Track Alignment Wheels (see Figure 2b) and secure it to the Final Drive Cover in the location shown in Figure 2a.



NOTE: This step can be done before or after the Drive Axle is installed.

Figure 2b



(2) Track Alignment Wheel
BRA003-417R

Figure 2a

NOTE: Since the Wheels are not going to be installed at this time the axles need to be held in place manually. They can be held in place with spacer material (see Step 3) or any other means you might devise

Jagdpantther - Late Assembly Instructions

Axles, Final Drive Cover, Track Alignment Wheel and Spacers

Step 3. Locate the Spacer Material.



(1) Spacer Material - 40" Length
BRA003-806T

Step 4. Cut Spacer A to go over the Main Axles, both #1 and #2. They go between the Metal Chassis and the Inner Wheels for both Axles. Cut Spacer B to go between over Main Axle #2 between the Inside Wheel and the Outside Wheel. Cut spacer C to go over the Rear Axle between the Metal Chassis and Idler Wheel Assembly,

NOTE: There is no Spacer for the Front Axle, the Drive Sprockets go up against the Final Drive Cover. Also there no spacer between the Inside Wheel and the Outside Wheel that fit on all Main Axles #1 - the two Wheels fit up against one another.



1.125" or 1 1/8"

Spacer A

Main Axle #1 between the Metal Chassis and the Inside Wheel.
Main Axle #2 between the Metal Chassis and the Inside Wheel.



1.375" or 1 3/8"

Spacer B

Main Axle #2 between the Inside Wheel and the Outside Wheel.



1.875" or 1 7/8"

Spacer C

Rear Axle between the Metal Chassis and the Idler Wheel Assembly.

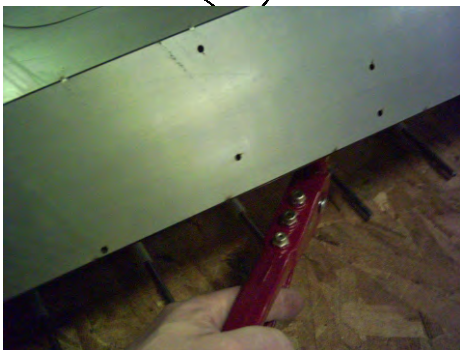
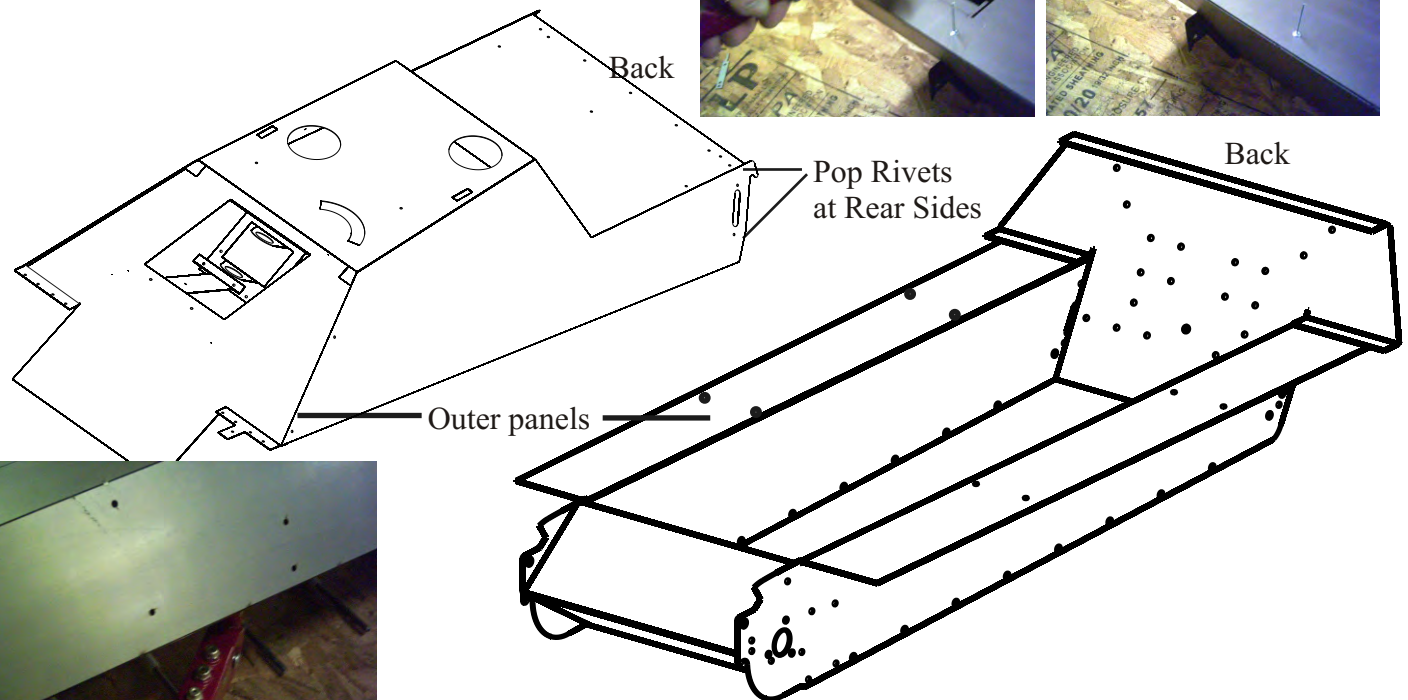
Jagdpanther - Late

Assembly Instructions

Upper Deck to Hull Connection

Step 1. With the Axles in place in the Hull you can now fit and secure the Upper Deck to the Hull. This is a relatively simple procedure, simply place the Upper Deck onto the Hull and align the holes of each across the Back and in the Outer Panels (see Step 3 under the Hull and Storage Bins Assembly procedures). There are also two hole at the rears sides that need to be secured. Secure with Pop Rivets

NOTE: There are several holes across the back to secure with Pop Rivets.



NOTE: Fasten the two Outer Panels on each side from underneath. If you do not do this at this stage you will need to remove the wheels to undertake this step.

Step 2. Your Assembly to this point should look like Figure 2a

NOTE: DO NOT secure the fronts of the “Outer Panels” where they meet and where the fenders will later be attached.

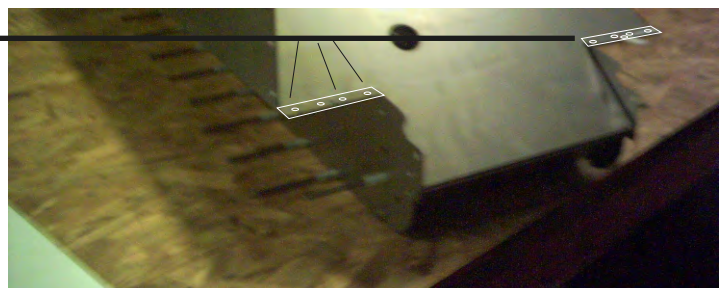
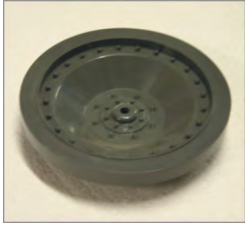


Figure 2a

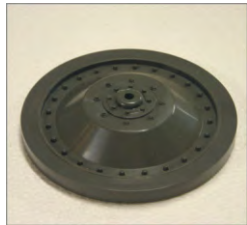
Jagdpanther - Late Assembly Instructions

Running Gear

Step 1. Locate the Wheels. There should be sixteen (16) Inner Wheels ("inny") (see Figure 1a) and sixteen (16) Outer Wheels ("outy") (see Figures 1b) When installing the wheels make sure that the open groove or hollow sides are placed to back or inside (see Figure 1c).



(16) Road Wheel
BRA001-601R



(16) Road Wheel
BRA001-601R



Figure 4c

NOTE; Both "inny" and "outy" wheels have a hollow side. We consider this to be the BACK side of the wheel.



Figure 4a

Inner "Inny" Wheel



Figure 4b

Outer "Outy" Wheel

Step 2. Since you already have the Axles installed you can move directly to the installation of the wheels. It is suggested to make this easier that you turn the tank over (see Figure 2a) so that the bottom is facing up. We will begin by installing the wheels in the following sequence and using the spacing material (as described earlier) where required. Begin by going to Step 3.



Figure 2a

Jagdpantther - Late Assembly Instructions

Running Gear

Step 3. Locate the Drive Sprockets and Drive Sprocket Spacers. The drive gears are made of 12 gauge steel. There is an inner drive wheel that is solid and an outergear that has cut out detail. They are held together by four (4) inner spacers.



(2) Drive Sprocket -
Inner
BRA003-730M

(2) Drive Sprocket -
Outer
BRA003-731M

(8) Drive
Sprocket Spacer
BRA003-732M

Step 4. Bend the Drive Sprocket Spacer (see Figure 4a to 90degrees along the long seam (see Figure 4b). Bend the tabs at either end up along the sides to 90 degrees (see Figure 4c). Per deck to the Chassis. Attach four (4) Drive Sprocket Spacers onto Drive Sprocket - Inner using Pop Rivets (see Figure 4d). Align the hole in the Drive Sprocket Spacers with holes in the Drive Sprocket - Outer and making sure the teeth on the two (2) Drive Sprockets are aligned secure in place with Pop Rivets (see Figure 4e).



Figure 4a

Figure 4b

Figure 4c

Figure 4d

Figure 4e

Step 5. The Drive Sprockets are now completed (see Figure 5a) and ready for installation. If you have used a length of Spacer Material to temporarily hold the axle in place remove it now and install the Drive Sprocket Assemblies onto the Drive Axle - one on each side (see Figures 4b and 4c). Secure in place with Push Nuts. Note that the Drive Sprocket Assemblies fit up against the Final Drive Covers (see Figure 5d).

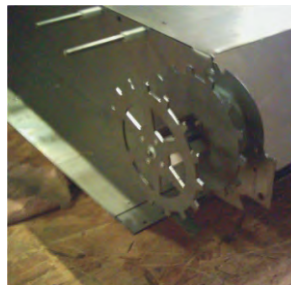


Figure 5b



Figure 5c



Figure 5d

Figure 5a

Jagdpanther - Late Assembly Instructions

Running Gear

Step 6. So that you don't have to go back to find out the axle number designation we are proving the line drawing shown in Figure 6a,

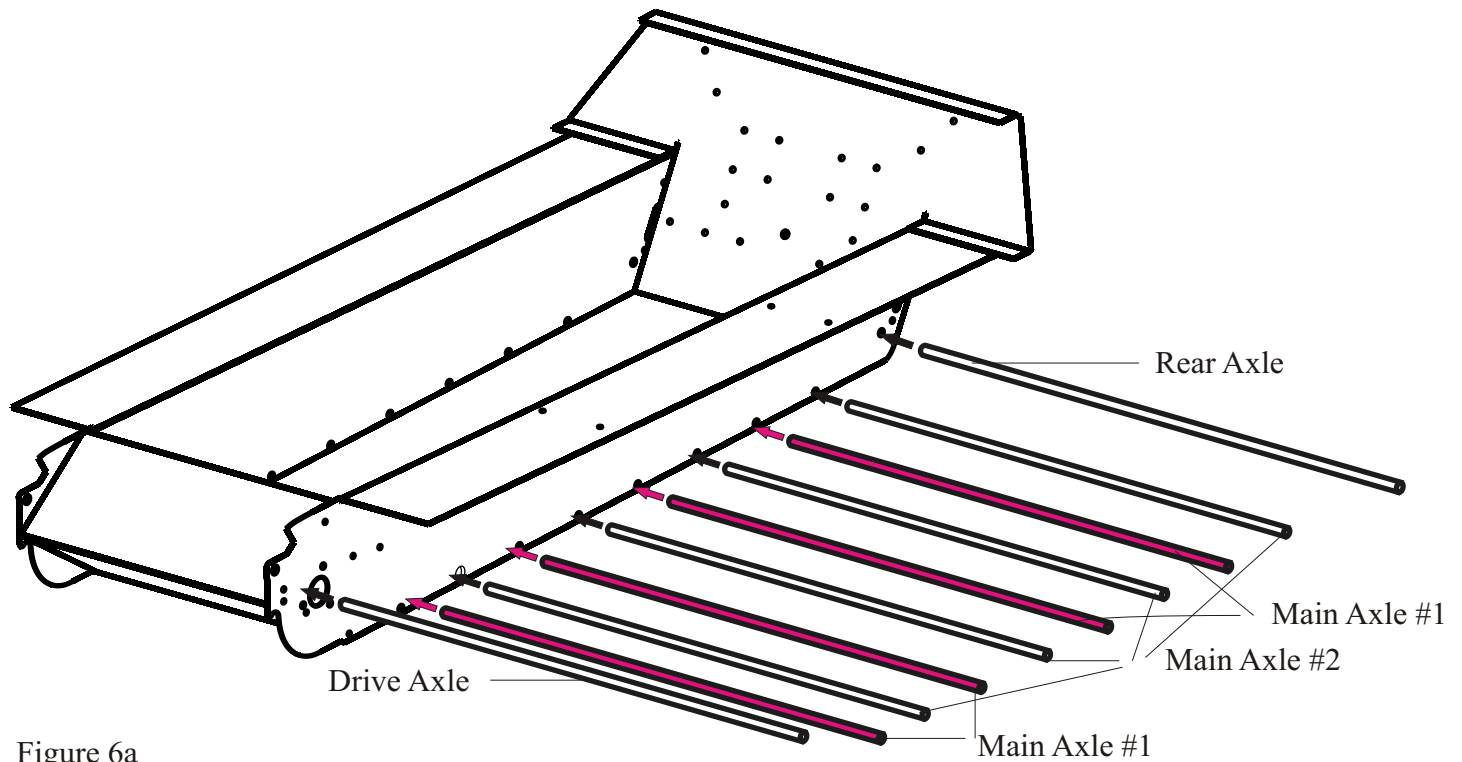


Figure 6a

Step 7. Install the one each of the Road Wheels (innys) onto each end (side) of the Main Axles #2 (see Figures 6a above and 7a and 7b) against the 1 3/8" Spacer Material and so that the back is facing outward and remembering that the back is the side with the groove or channel in it.

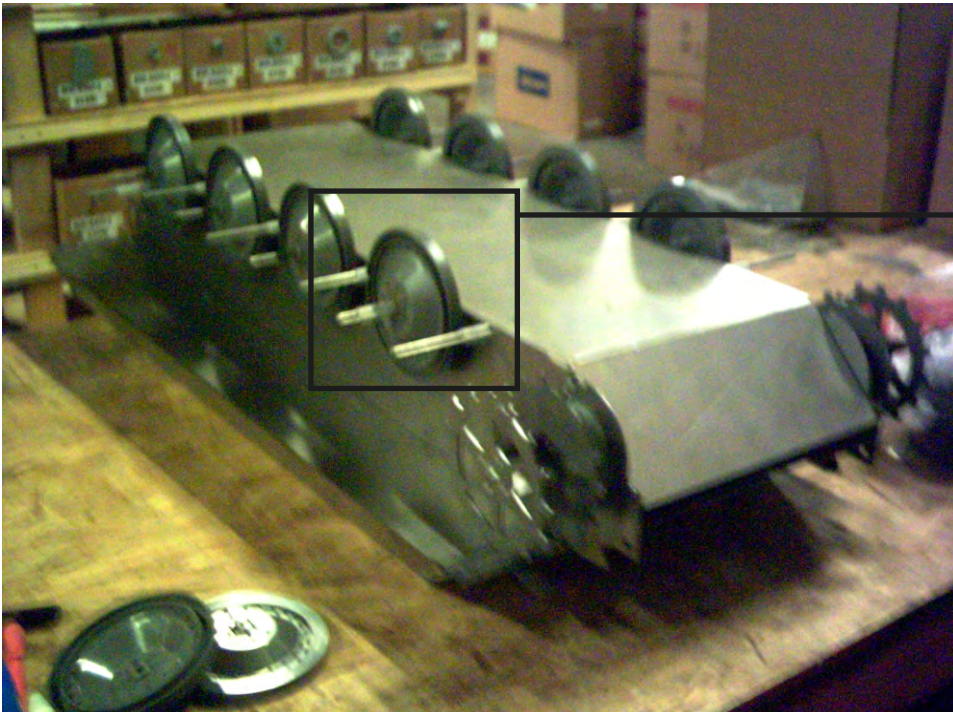


Figure 7a

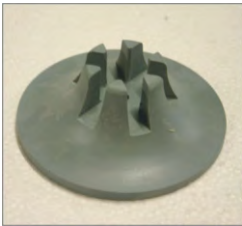


Figure 7b

Jagdpanther - Late Assembly Instructions

Running Gear

Step 8. Before we continue any further we need to install the Idler Wheels. Each Idler Wheel comes in two (2) pieces, the Inner Idler Wheel and the Outer Idler Wheel and need to be assembled. Position the Outer Idler Wheel Piece over the Inner Idler Wheel piece so that the staves on the Outer wheel mesh with the grooves in the Inner Wheel and then push the two pieces together until they will come together no further (see Figures 9a and 9b). Although they fit together tightly it is a good idea to secure them together with Super Glue. Install the Idler Wheel Assemblies (one on each side) onto the Rear Axle against the 1 7/8" Spacer Material that you have already installed to hold the Rear Axle in place temporarily See Figure 8a). Secure with Push Nuts.



(2) Idler Wheel
Inner
BRA003-434R



(2) Idler Wheel
Outer
BRA003-435R



Figure 8a

NOTE:

At this point you before securing the Idler Wheels in place with Push Nuts you may want to refer to **Steps 10 and 11.**

Step 9. Install the one pair (see Figure 9a) each of the Road Wheels (outys) onto each end (side) of the Main Axles #1 (see Figure 6a for Axle locations). Install the 1 3/8" Spacer Material to Main Axles #2 and then install the remaining Road Wheels (innys) against the 1 3/8" Spacer Material (see Figures 9b and 9c and 9d).



Figure 9a

Double "outy" Road Wheel set

NOTE: During this process it is advisable to put together a short piece of track and to check the fit as outlined in **Step 10.**

Figure 9b

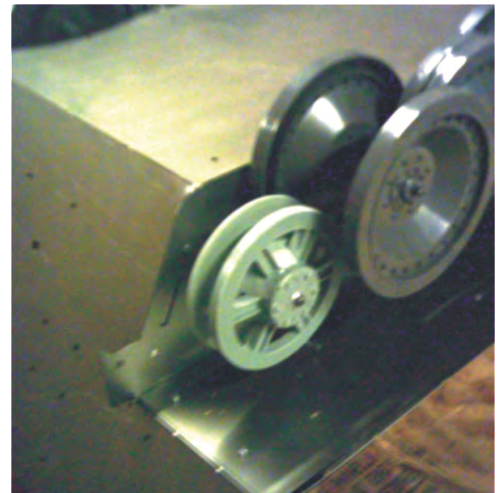


Figure 9c

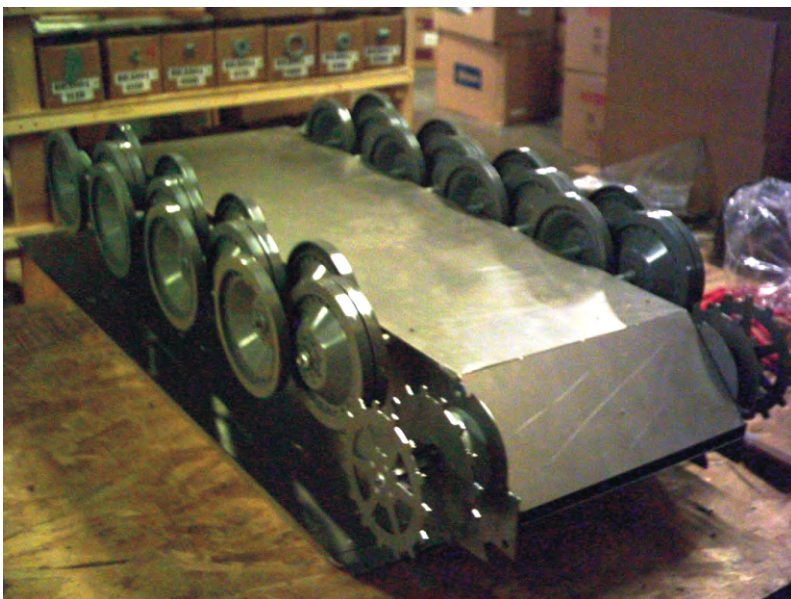


Figure 9d

Jagdpantther - Late Assembly Instructions

Running Gear

Step 10. Before finally securing the Road Wheels in place it is advisable at this point to assemble a short piece of track and lay it over the over the Wheels See Figures 10a and 10b) to make sure the alignment of the Running Gear is straight and true and that everything has been installed correctly. The inside of the teeth on the inside of the track should pass on the outside of the Idler Wheel (see Figure 10c).

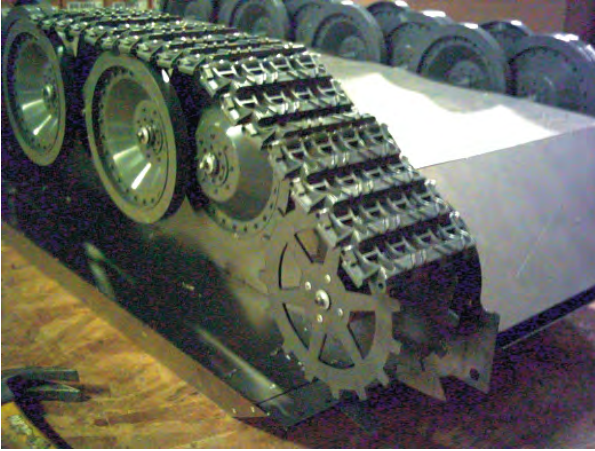


Figure 10a



Figure 10b



Figure 10c

Step 11. Secure all wheels in place with Push Nuts.

Step 12. Assemble Complete the Track assembly and install.



Figure 12a

Jagdpanther - Late Assembly Instructions

Running Gear

Step 13. The tank with the Running Gear installed, at this point should look as it does in Figure 13a.



Figure 13a

Step 14. Locate the Drive Gear Hub and install to the Drive Sprocket as shown in Figure 14a. Install one on each side using Epoxy. This can be done now or at a later date.



(2) Drive Gear Hub
BRA003-406R



Figure 14a

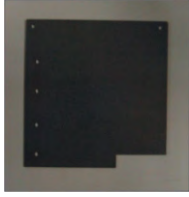
Jagdpanther - Late Assembly Instructions

Front Fender Assembly and Installation

Step 1. Locate the metal Fender pieces, left and right and the two (2) Fender Sides .



(1) Fender -
Left
BRA003-706M



(1) Fender -
Right
BRA003-707M



(1) Fender Sides -
Two (2) Pieces
BRA003-717M

Step 2. Ben the Fender fronts to a radius that matches the cure of the Fender Side pieces (see Figure 2a and 2b).

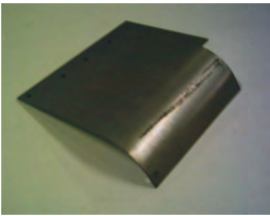


Figure 2a

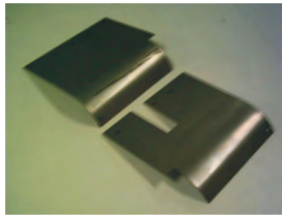


Figure 2b

Step 3. Bend the tabs on the Fender Side pieces up 90 degrees, bending one in the opposite or mirror image of the other (see Figures 3a, 3b and 3c)..



Figure 3a



Figure 3b



Figure 3c

Step 4. Place the Side pieces onto the Right and Left fenders and secure in place with Pop Rivets (see Figures 4a, 4b and 4c).



Figure 4a



Figure 4b



Figure 4c

Step 5. Instal the fenders by aligning the holes in the fender with the holes in the fronts of the hull/Upper Deck assembly (see Figures 5a, 5b and 5c). When complete they should appear as in Figure 5d.



Figure 5a



Figure 5b



Figure 5c

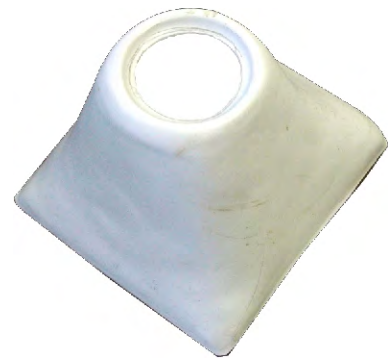


Figure 5d

Jagdpanther - Late

Assembly Instructions

Mantlet and Barrel Assembly



Take two barrel stepdown rings and clue them into each end of the barrel step-down



Insert barrel stepdown into bell portion of mantlet



Allow 5.5 inches to remain extended out from the face of the bell mantlet



Glue stepdown piece onto the bell mantlet.



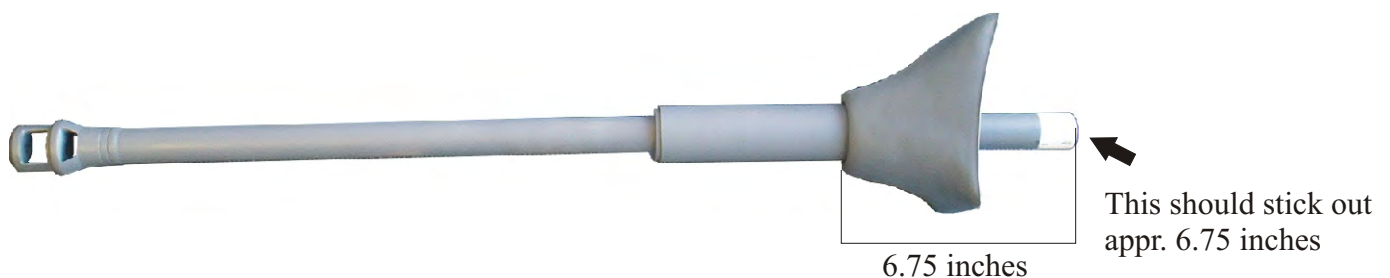
Glue the two muzzle brake halves together.



Insert Muzzle Brake into barrel and glue



Insert barrel into barrel stepdown



This should stick out appr. 6.75 inches

Jagdpanther - Late Assembly Instructions

Engine Intake Grill Installation

Step 1. Locate the four (4) Engine Intake Grills. Install the Engine Intake Grills into the four corners at the rear of the Upper Deck over the engine (see Figure 1a).



(4) Engine Intake Grill
BRA003-430R

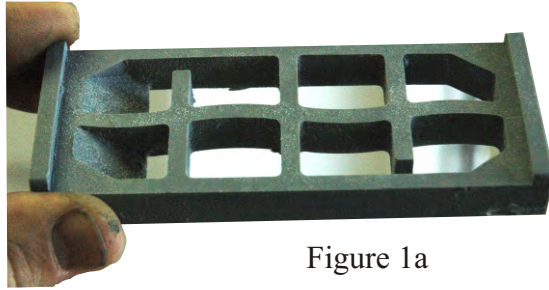


Figure 1a

Step 2. The (4) Engine Intake Grills are to be installed into Engine Cover portion of the Upper Deck (see Figure 2a).

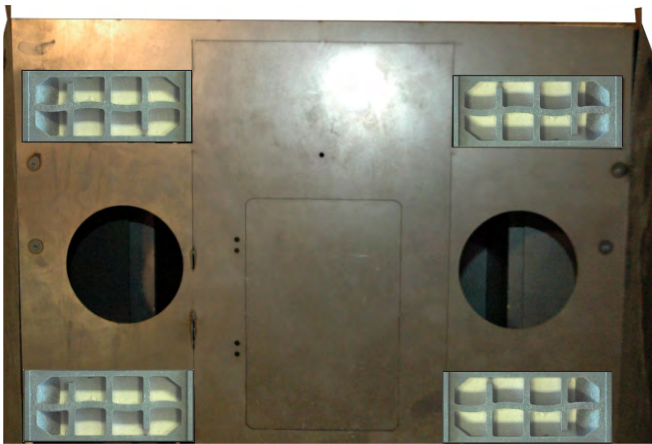


Figure 2a

Step 3. To achieve the installation at the notch bend the small tabs at the bottom of the larger tabs out to 90 degrees (see Figure 3a and 3b). Then bend the larger tab down into the opening in the Upper Deck to 90 degrees (see Figure 3b and 3c). Fit the Engine Intake Grills into the pockets (see Figure 3d) you have created at the four corners and secure with Epoxy (see Figure 3e). The grill when installed should look as it does in Figure 3f.

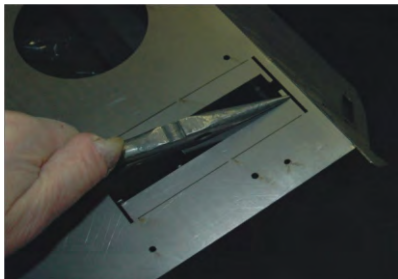


Figure 3a

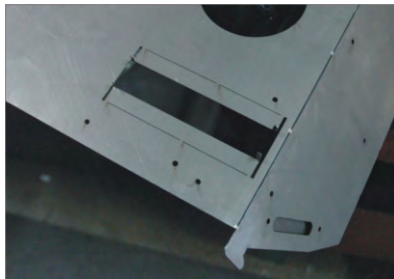


Figure 3b



Figure 3c

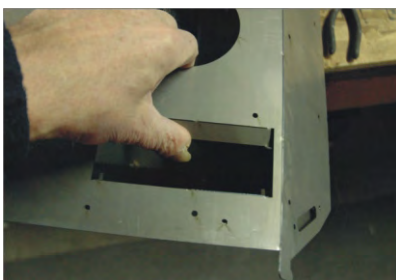


Figure 3d

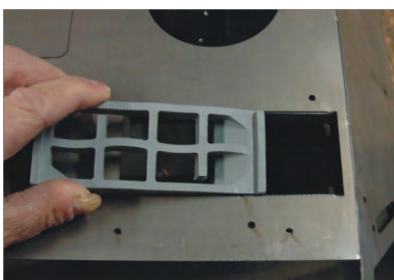


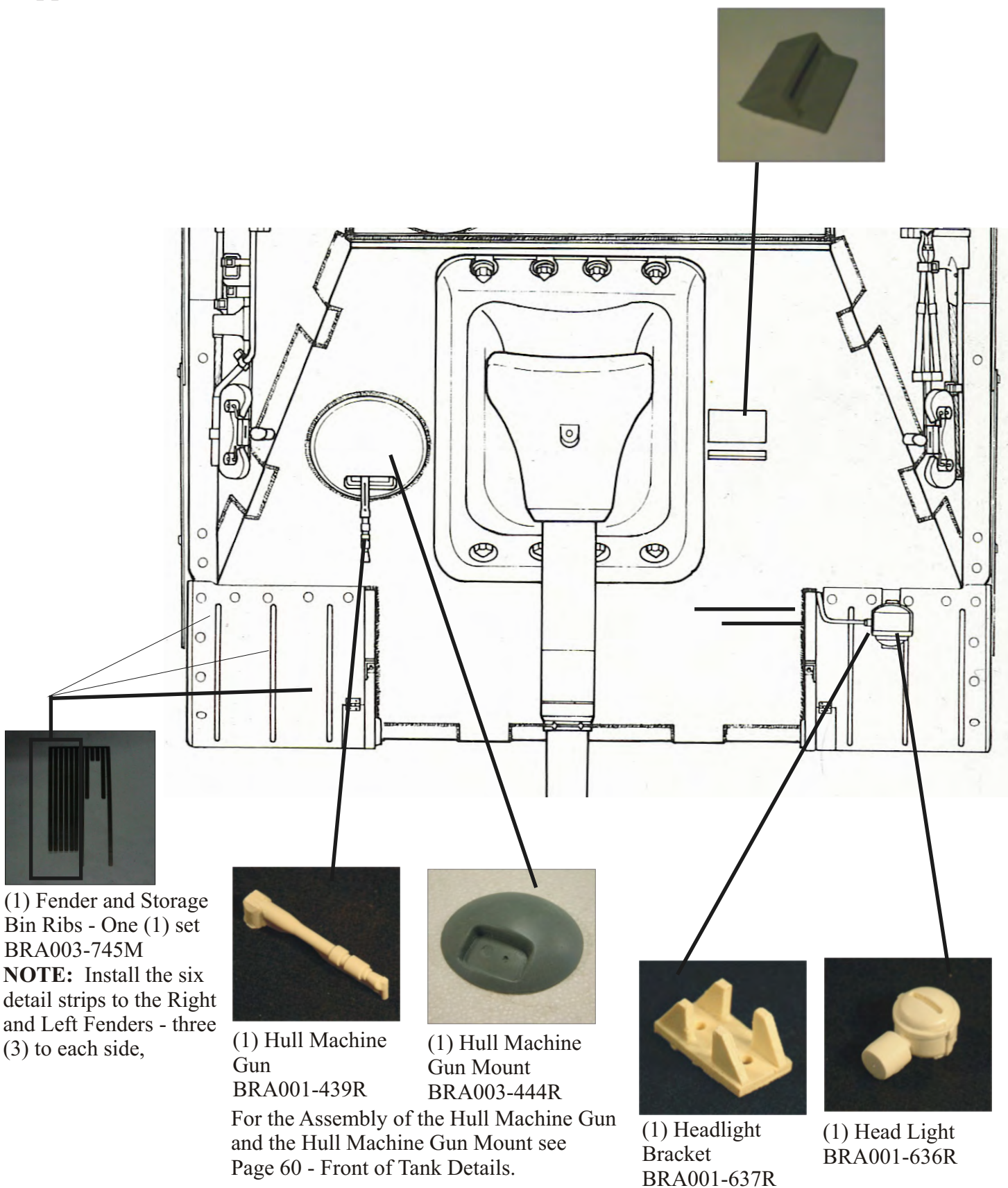
Figure 3e



Figure 3f

Jagdpanther - Late Assembly Instructions

Upper Deck Part Placement



Jagdpantther - Late Assembly Instructions

Upper Deck Part Placement - Rear - Antennae Mount, Engine Intake Grill, Raised Engine Grill, Engine Deck Vent, Raised Engine Vent Side Block, Engine Vent, Engine Deck Round Cover - Large, Engine Deck Round Cover - Small, Engine Hatch Hinge Base, Engine Hatch Hinge Arm, Rear Tow Cable Bracket and Engine Deck Round Cover - Flat



(2) Engine Hatch Hinge Base
BRA003-424R



(2) Engine Hatch Hinge Arm
BRA003-425R



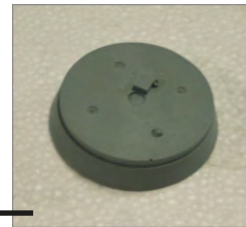
(2) Engine Hatch Hinge Assemblies



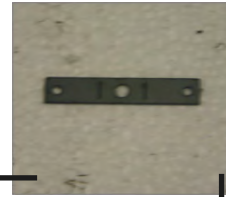
(1) Engine Deck Round Cover - Small
BRA003-422R



(1) Engine Deck Vent
BRA003-420R

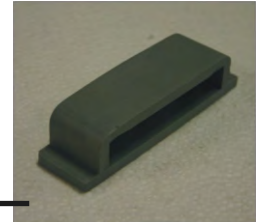


(1) Engine Deck Round Cover - Large
BRA003-421R

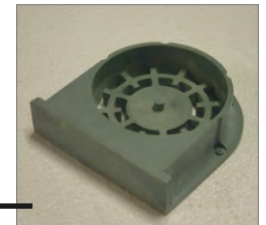


(2) Rear Tow Cable Bracket -
BRA003-743M

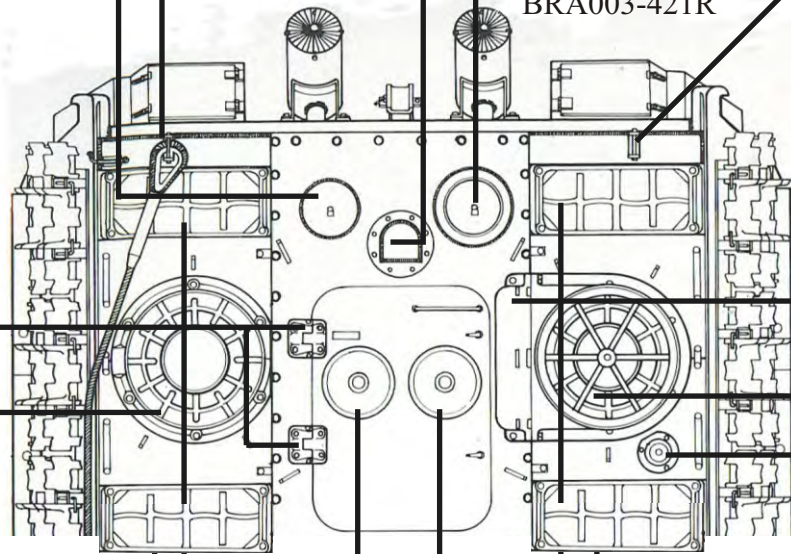
NOTE:
The Raised Engine Vent Side Block is positioned with the open side down and flat side against the flat side of the Raised Engine Grill



(1) Raised Engine Vent Side Block
BRA003-432R



(1) Raised Engine Grill
BRA003-431R



(1) Engine Vent
BRA003-433R



(2) Engine Intake Grill
BRA003-430R
See Page 26



(2) Engine Deck Round Cover -Flat
BRA003-423R



(2) Engine Intake Grill
BRA003-430R
See Page 26



(1) Antennae Mount
BRA003-447R

Jagdpanther - Late

Assembly Instructions

Fighting Compartment Roof

(1) Rear Hatch
BRA004-404R

(1) Rear Hatch
Hinge Plate
BRA004-405R

(2) Rear Hatch
Hinge Plate Pin
BRA004-406R

(1) Rotating
Periscope Bolt
Detail
BRA004-418R

(1) Close In
Defense Port
BRA004-419R

(2) Sliding
Periscope Blocks
BRA004-422R

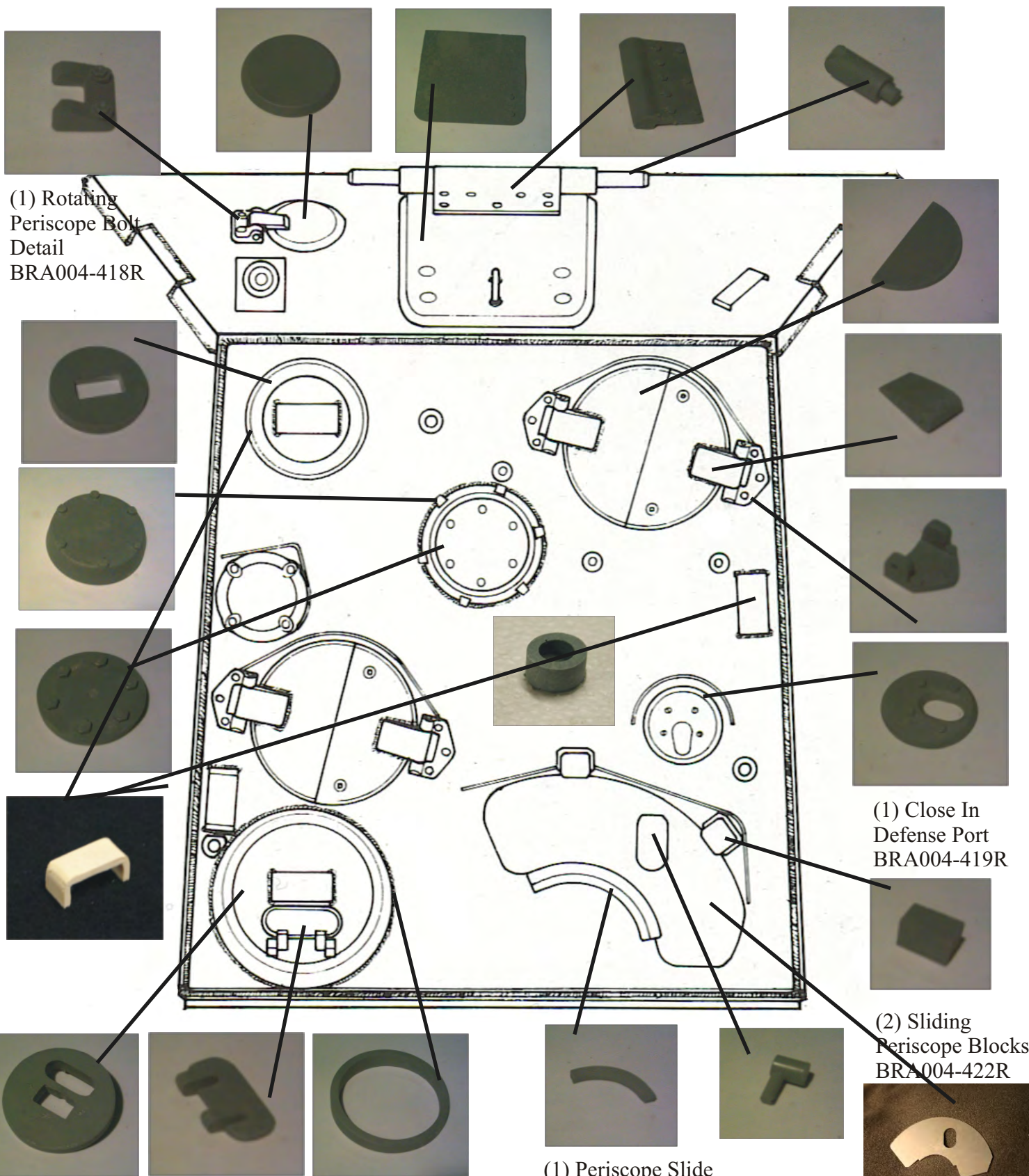
(1) Periscope Slide
Guide
BRA004-426R

(1) Upper Periscope
Track
BRA004-760M

(1) Commander's
Periscope Housing
BRA004-401R

(1) Commander's
Periscope Housing
Hatch Cover
BRA004-403R

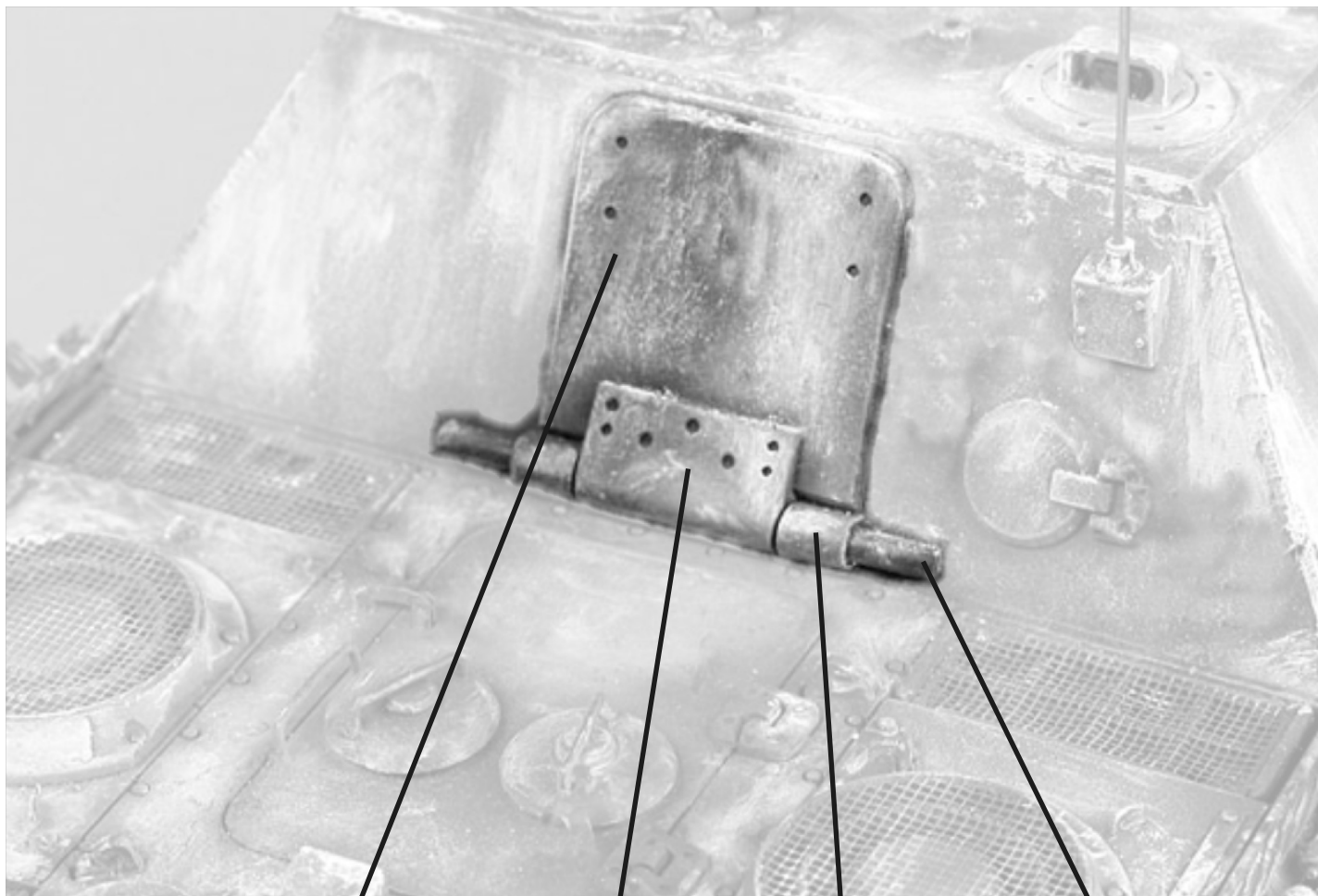
(1) Commander's
Periscope Housing
Ring
BRA004-402R



Jagdpanther - Late

Assembly Instructions

Loader's Hatch Assembly



(1) Rear Hatch
BRA004-404R



(1) Rear Hatch
Hinge Plate
BRA004-405R



(2) Rear Hatch
Hinge Plate Pin
BRA004-406R



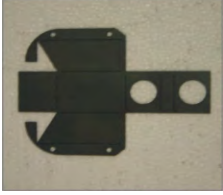
(2) 1/4" x 1" Wood
Dowel Rear Hatch
Hinge Plate
Extension Pin
BRA004-407R

Jagdpanther - Late Assembly Instructions

Back of Tank Details

Muffler Covers

Step 1. Locate the two (2) Muffler Covers.



(2) Muffler Cover
BRA003-715M

Step 2. Fold up the Sides to 90 degrees (see Figure 2a).



Figure 2a

Step 3. Fold the Back at the top seam between the two (2) large holes up to 90 degrees (see Figure 3a). Fold the Back at the bottom seam between the two (2) large holes up to 90 degrees (see Figure 3b). Bend the Front up to match the slope of the fronts of the sides (see Figure 3c). Bend the Back up 90 degrees to be flush with the ends of the sides (see Figure 3d).



Figure 3a



Figure 3b



Figure 3c



Figure 3d

Step 4. Bend the Flanges on each side outward to 90 degrees (see Figures 4a and 4b)



Figure 4a



Figure 4b

Step 5. Mount the Muffler covers onto the rear of the tank as shown in Figure 5a.

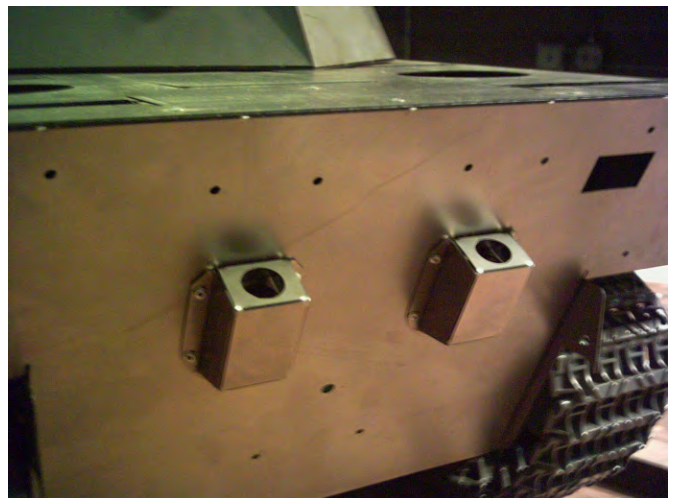
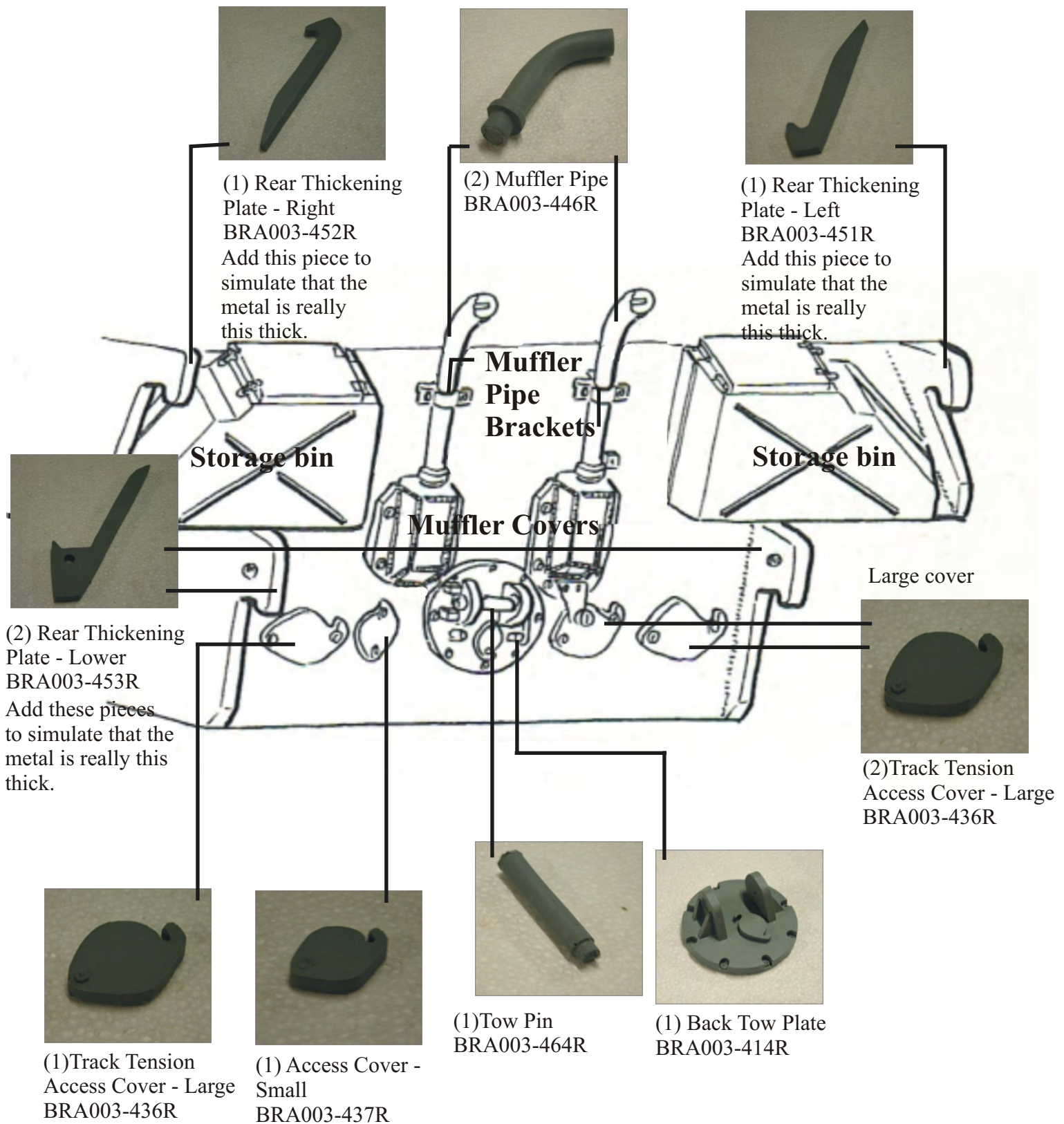


Figure 5a

Jagdpanther - Late Assembly Instructions

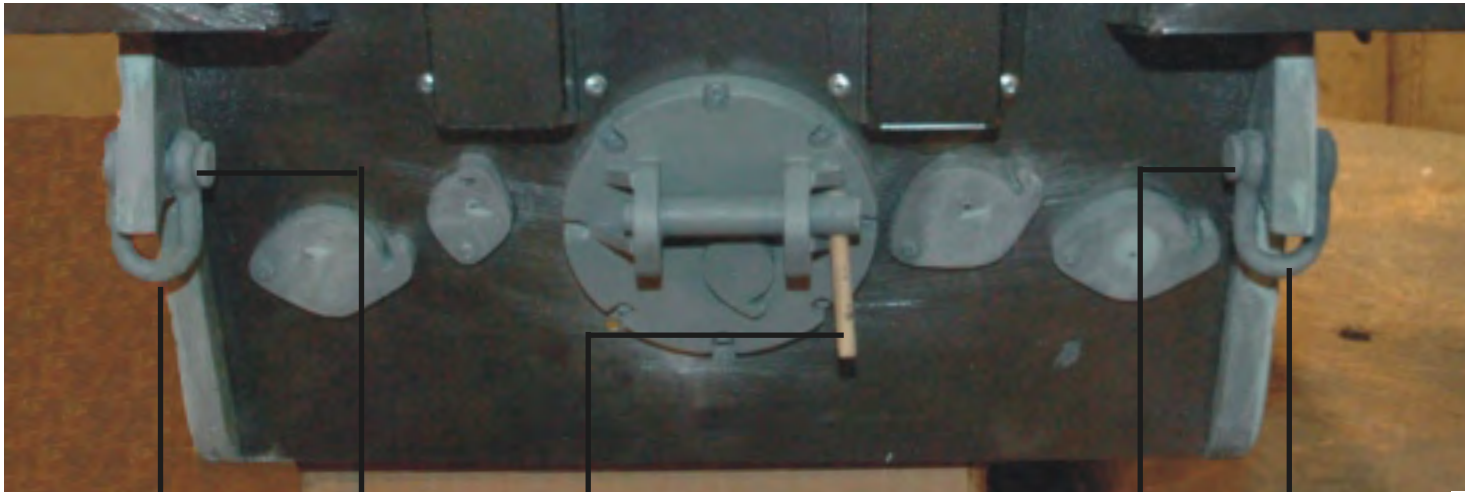
Back of Tank Details



Jagdpanther - Late

Assembly Instructions

Back of Tank Details



(1) Tow Shackle
BRA003-410R



(1) Tow Shackle Pin
BRA003-411R

NOTE:

Tow Hook Pin handle
is not provided - here
in the shop we use a
piece of 1/8" dowel.



(1) Tow Shackle Pin
BRA003-411R



(1) Tow Shackle
BRA003-410R

Jagdpantther - Late

Assembly Instructions

Front of Tank Details

NOTE: Drill a 1/4" hole in the Machine Gun Mount at an angle that will allow the Machine Gun to be horizontal (parallel to the ground). Clean up the Hull Machine Gun and install it into the hole. Secure with Super Glue.



Hull Machine Gun and
Hull Machine Gun
Mount Assembly



(2) Front
Thickening
Plate - Upper
BRA003-461R

NOTE; Add these pieces to simulate that the metal is really this thick.



(1) Tow Shackle
BRA003-410R



(1) Tow Shackle
Pin
BRA003-411R



(1) Tow Shackle
Pin
BRA003-411R



(1) Tow Shackle
BRA003-410R



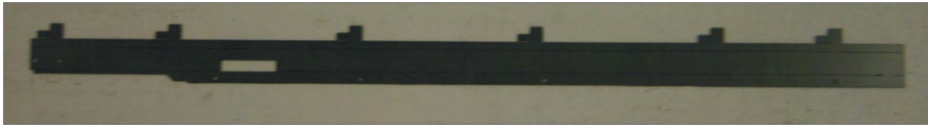
(2) Front Thickening
Plate Lower
BRA003-460R

NOTE; Add these pieces to simulate that the metal is really this thick.

Jagdpanther - Late Assembly Instructions

Side Shield Hangers and Panels

Step 1. Locate the Left and Right Side Shield Rails remembering that Left is selected while facing forward as if you were sitting in the tank.



(1)Side Shield
Rail - Left
BRA003-712M



(1) Side Shield
Rail - Right
BRA003-713M

Step 2. Bend the Side Shield Rail to a slight angle, approximately 15 degrees, along the seam that will end up the closest to the Upper Deck where it will be applied (see Figure 2a). Align the holes in the Side Shield Rail with the ones in the Upper Deck that have been provided and secure the Side Shield Rail in place using Pop Rivets (see Figures 2b and 2c)..



Figure 2a



Figure 2b



Figure 2c

Step 3. Bend the rail edge down at the outer seam to 90 degrees (see Figure 3a). Then bend the rail down so that the top surface of the rail is parallel to the ground (see Figure 3b)



Figure 3a



Figure 3b

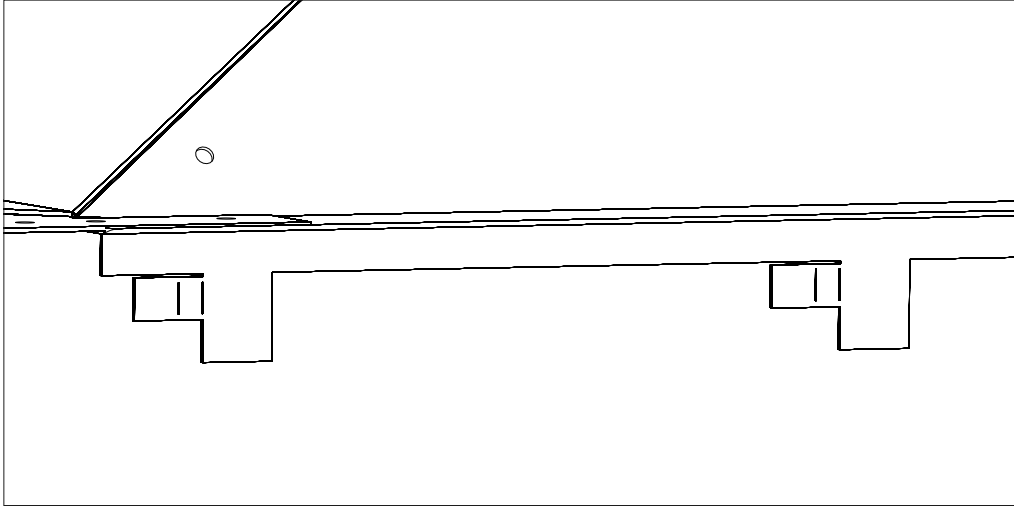
NOTE: The Side Shield Rails shown in these photographs are of an earlier model and did not include the Side Shield Clips as an integral part of the Side Shield rail as shown in Step 1. For more information on the installation of the Clips go to the end of this section.

Jagdpantner - Late

Assembly Instructions

Side Shield Hangers and Panels

Step 4. The Clips for hanging the Side Shields from are an integral part of the Side Shield Rail and before bending to accommodate the Side Shields look as they do in Step 1 and in Figure 4a below. They need to bent in the following manner to accommodate the Side Shields. Bend the Clip outward to 90 degrees (see Figure 4b) and then bend it back at the second seam another 90 degrees creating a “U” shape (see Figure 4c).



NOTE: The Side Shield Rails shown in the photographs in Steps 2 and 3 are of an earlier model which did not include the Side Shield Clips as an integral part of the Side Shield Rail as shown in these illustrations.

For more information on the Clips needed to accommodate the Side Shield Panels on the earlier models see Steps 8, and 9.

Figure 4a

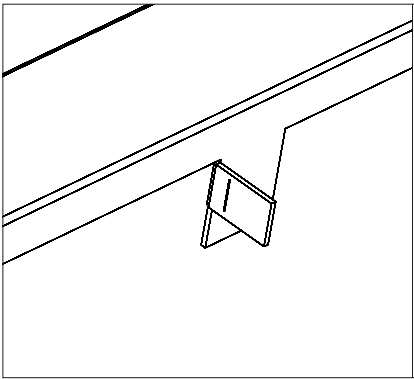


Figure 4b

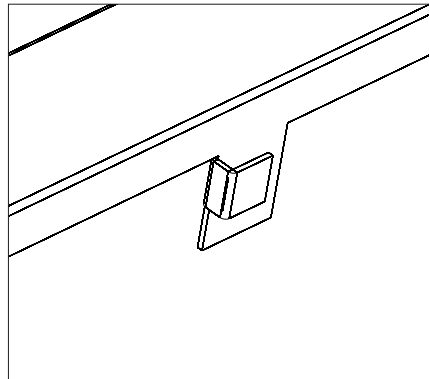


Figure 4c

Step 5. Locate the Side Shield Panels as you are now ready to install them.



(2) Side Shield
Type A
BRA003-708M



(2) Side Shield
Type B
BRA003-709M



(6) Side Shield
Type C
BRA003-710M

NOTE: The curfs on the openings of Shields Type and Type B are the only thing that differentiates the two from one another as that differentiation causes one typ to be the Front Panel and one to be the Rear Panel. And they are exactly the opposite in placement from one side to the other. In other words the Type A Panel goes in the Front on one side and on the Rear on the other.

Jagdpantser - Late

Assembly Instructions

Side Shield Hangers and Panels

Step 6. Install the side Shields beginning at the rear (see Figure 6a). Align the holes in the Side Shields with the Clip beginning with a Type A Panel on the Left side (a Type B panel on the Right side). Slide the Panel onto the clip and shift it Forward (on the Left side of the tank) or backward (on the Right side of the tank) until the curf drops over the arm of the Clip See Figure 6b).



Figure 6a



Figure 6b

Step 7. Continue the process with three (3) Type C panels (see Figure 7a). Complete the Side Shield installation by installing a Type B panel on the Left side (Type A panel on the Right side) (see Figure 7b).



Figure 7a

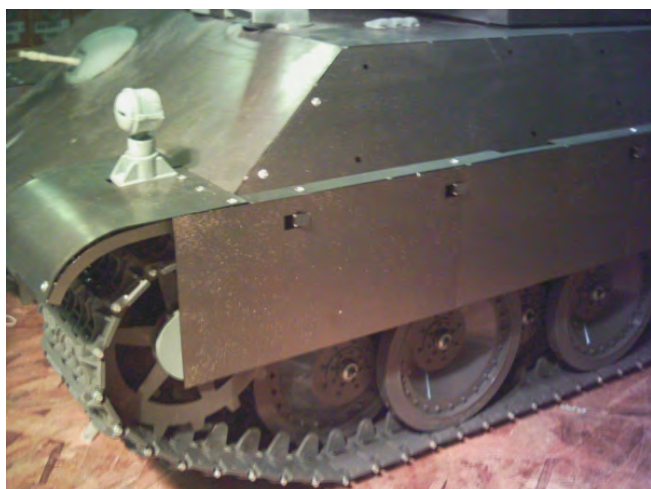


Figure 7b

Step 8. This step is to assist in the application of the Side Shield Rail Clips. **NOTE:** Steps 8, 9 and 10 can be skipped if your tank is a later model in which the clips are an integral part of the Side Shield Rail.



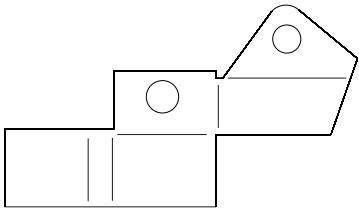
Side Shield Clips
(for early models only)
There is no part number
for this item.

Jagdpantther - Late

Assembly Instructions

Side Shield Hangers and Panels

Step 9. Bend the Side Shield Clips into the configuration as shown in Figures 5a, 5b, 5c, and 5d. Bend the right side arm up to 90 degrees (see Figure 5a). Bend the top piece of that arm with the hole in it back inward to 90 degrees (see Figure 5b). Bend the left side arm back in the opposite direction at the first seam to 90 degrees. Make a second bend at the second seam another 90 degrees backwards (see Figure 5c and 5d). **NOTE:** There are six clips for each side and the Left Side Clips should be bent to a mirror image of the Right Side Clips.



Side Shield Clip

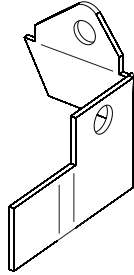


Figure 5a

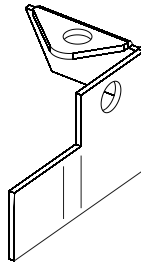


Figure 5b

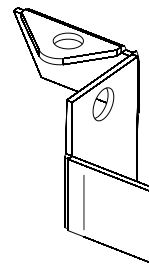


Figure 5c

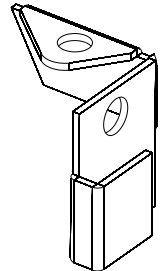


Figure 5d

Step 10. Install the Clip into the Side Shield Rail by install them into the channel from the underside, aligning the hole in the top and sides and securing in place with Pop Rivets (see Figures 10a and 10b).



Figure 10a



Figure 10b

Step 11. For the side panel installation see Steps 5, 6 and 7.

Jagdpanther - Late

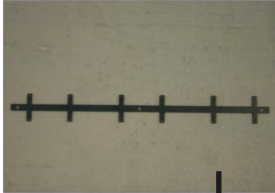
Assembly Instructions

Tank Details - Right Side

NOTE: Only the Brackets and Resin Parts pictured here are provided with this kit. None of the Tow Cables, Tow Cable Connectors, Ropes or Tools are provided.



Note: Fold the fins on the extra Track Bracket into the Configuration shown to the left.



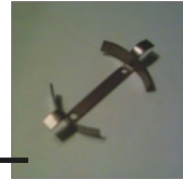
(1) Extra Track Bracket
BRA003-741M



(168) Track Link
BRA001-902P

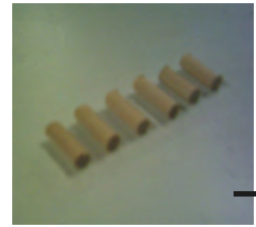
Note: Place six tracks on the Track Bracket on each side of the tank

Note: Fold the Track Cable Bracket into the Configuration as shown below.



(1) Track Cable Bracket
BRA003-736M

Note: Mount two (2) of the Dowels into the holes in the Axe Bracket.



(6) 1/4" x 1/2" long
Wooden Dowel
BRA003-805P



(1) Fire
Extinguisher
BRA003-405R



(1) Right Pry Bar
Bracket
BRA003-738M



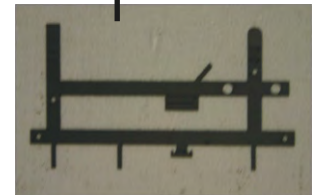
(1) Left Pry Bar
Bracket
BRA003-737M



(1) Jack Block
Bracket
BRA003-735M



(1) Jack Block
BRA003-445R



(1) Axe Bracket
BRA003-739M

Note: Fold the Right Pry Bar Bracket into the Configuration as shown above.



Note: Fold the Left Pry Bar Bracket into the Configuration as shown above.



Note: Fold the Jack Block Bracket into the Configuration shown above and install the Jack Block. Secure the metal band with Epoxy.



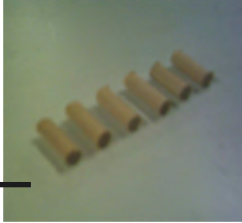
Note: Fold the Axe Bracket into the Configuration as shown above.

Jagdpantther - Late

Assembly Instructions

Tank Details - Left Side

Note: Mount two (2) of the Dowels into the holes in the Shovel Bracket.



(6) 1/4" x 1/2" long
Wooden Dowel
BRA003-805P

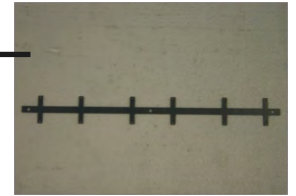
NOTE: Shape the Storage Tube Bracket to fit the shape of the Storage Tube and then secure the Tube to the side of the tank in the location shown using Pop Rivets



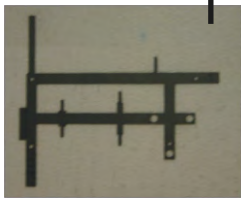
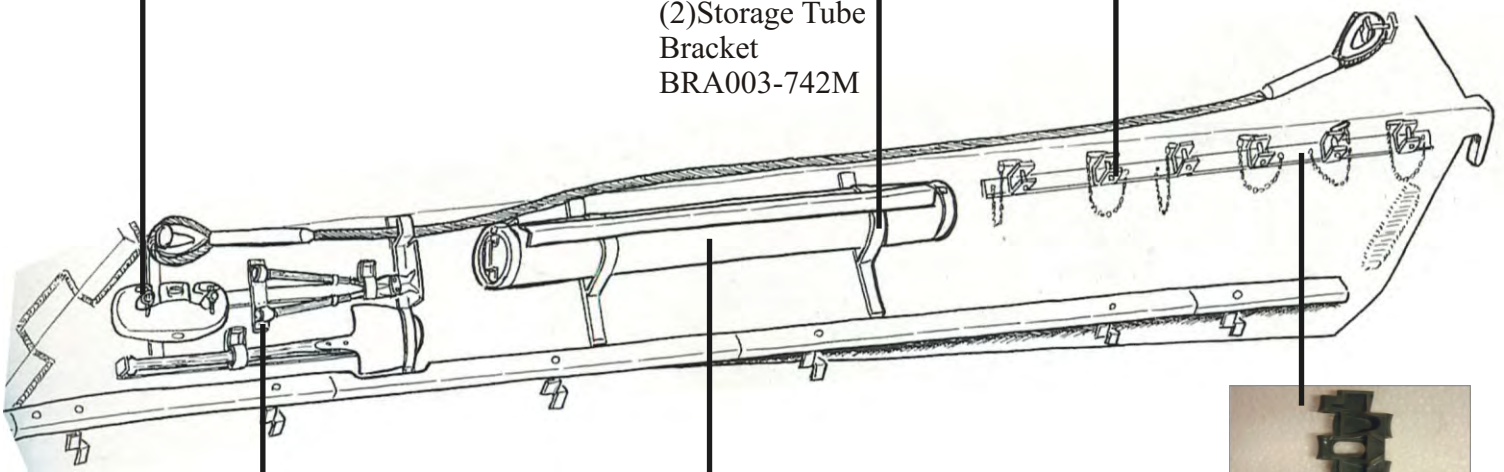
(2) Storage Tube
Bracket
BRA003-742M



Note: Fold the fins on the extra Track Bracket into the Configuration shown to the left.



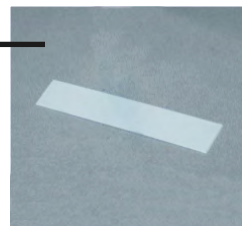
(1) Extra Track
Bracket
BRA003-741M



(1) Shovel Bracket
BRA003-740M



(1) Storage Tube
BRA003-602T



1 3/4" x 3 3/4" x 1/16"
Styrene
BRA003-811P

NOTE: Place the Storage Tube on end against the Styrene and trace the shape twice. Cut out the Circle patterns you have created and affix them to either end of the Storage Tube using Super Glue and then clean and smooth the joints.



(168) Track Link
BRA001-902P

Note: Place six tracks on the Track Bracket on each side of the tank (see Previous Page).



Note: Fold the Shovel Bracket into the Configuration as shown above. Secure in place with Pop Rivets.

NOTE: Only the Brackets and Resin Parts pictured here are provided with this kit. None of the Tow Cables, Tow Cable Connectors, Ropes or Tools are provided.

