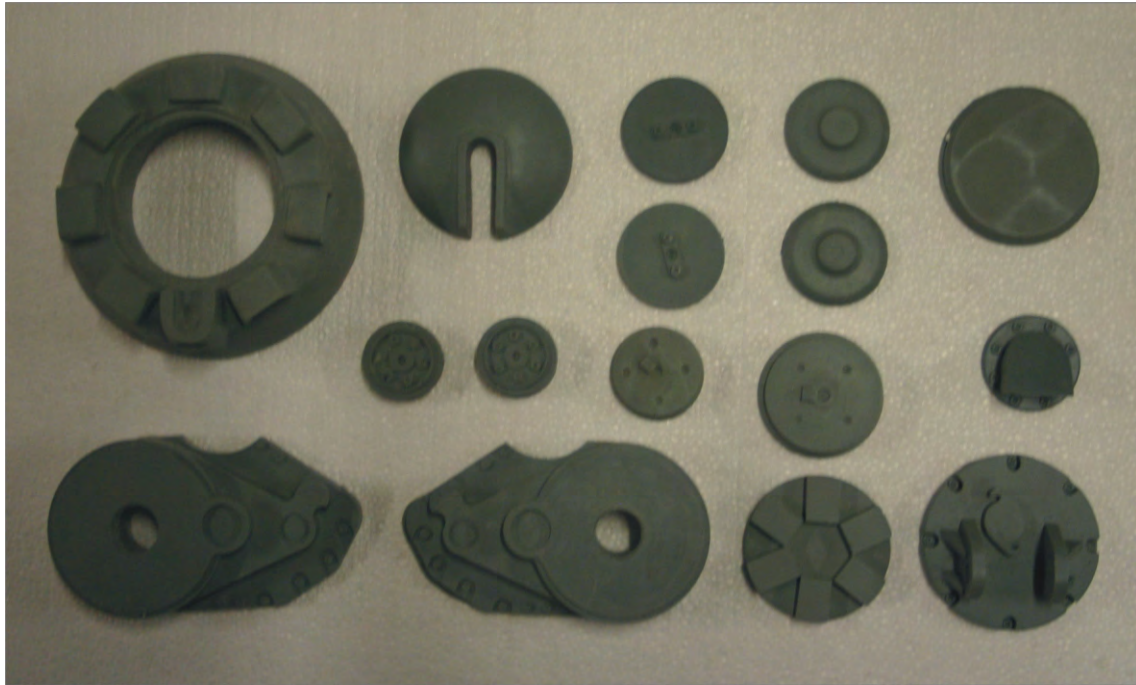


Panther Ausf G - Parts

Bag 1 Contents (13 Parts - 16 Pieces)

Note : Quantity of part indicated in ()



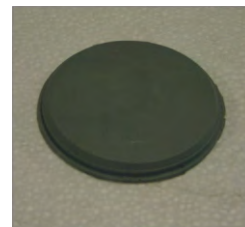
(1) Cupola
BRA003-401R



(1) Cupola Hatch
BRA003-402R



(2) Drive Gear Hub
BRA003-406R



(1) Turret Loader's
Hatch
BRA003-407R



(1) Turret Vent
Cover
BRA003-412R



(1) Back Tow Plate
BRA003-414R



(1) Final Drive
Cover - Left
BRA003-415R



(1) Final Drive
Cover - Right
BRA003-416R



(2) Track Alignment
Wheel
BRA003-417R



(1) Engine Deck
Vent
BRA003-420R



(1) Engine Deck
Round Cover - Large
BRA003-421R



(1) Engine Deck
Round Cover -Small
BRA003-422R

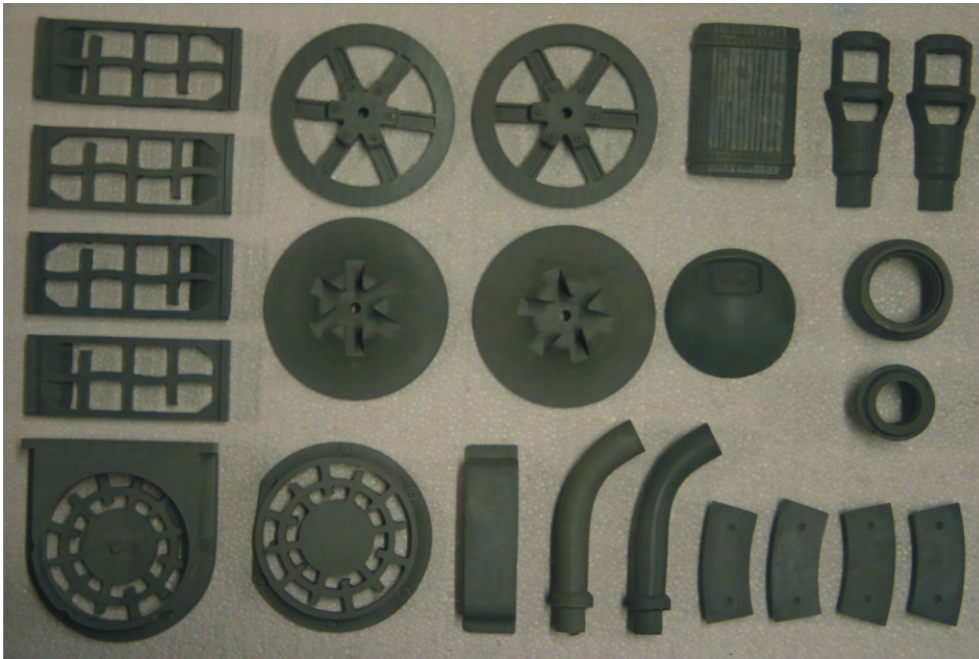


(2) Engine Deck
Round Cover -Flat
BRA003-423R

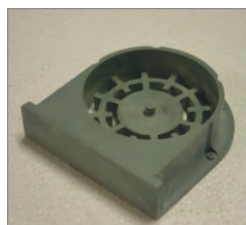
Panther Ausf G - Parts

Bag 2 Contents (13 Parts - 23 pieces)

Note : Quantity of part indicated in ()



(4) Engine Intake Grill
BRA003-430R



(1) Raised Engine Grill
BRA003-431R



(1) Raised Engine Vent Side Block
BRA003-432R



(1) Engine Vent
BRA003-433R



(2) Idler Wheel Inner
BRA003-434R



(2) Idler Wheel Outer
BRA003-435R



(4) Turret Rotate Guide
BRA003-441R



(1) Hull Machine Gun Mount
BRA003-444R



(1) Jack Block
BRA003-445R



(2) Muffler Pipe
BRA003-446R



(2) Muzzle Break
BRA003-448R



(1) Mantlet/Barrel Connector Piece
BRA003-454R

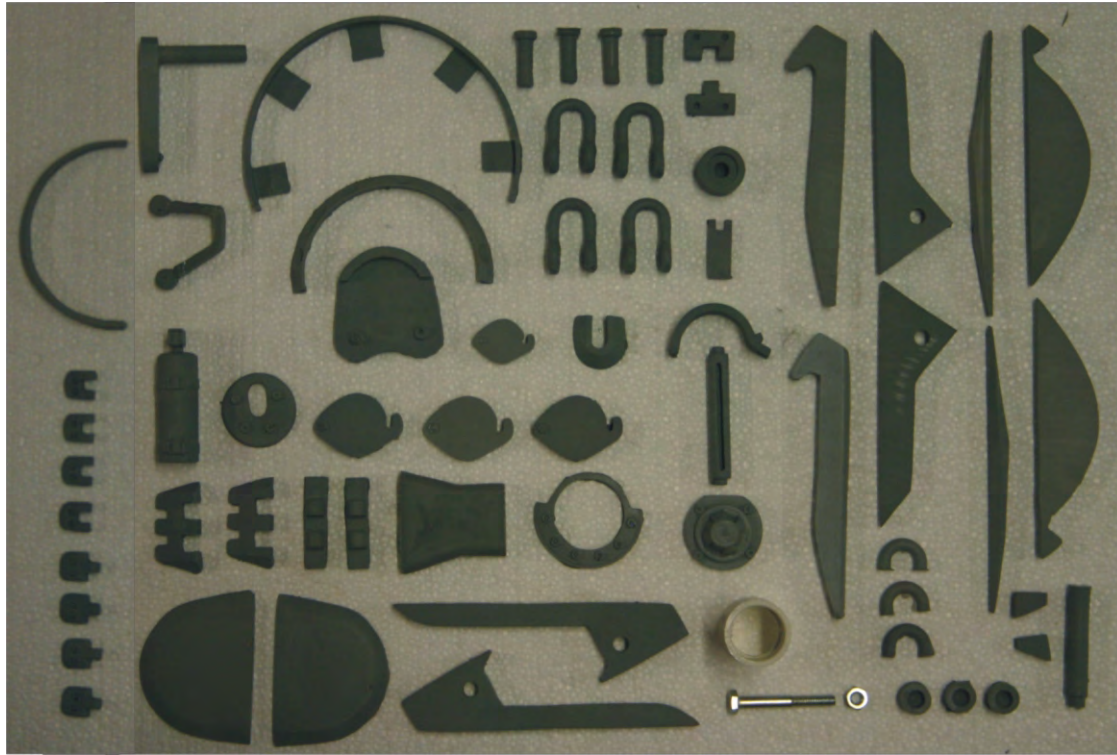


(1) Barrel/Mantlet Step Down
BRA003-455R

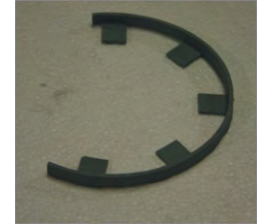
Panther Ausf G - Parts

Bag 3 Contents 45 Parts - 70 Pieces)

Note : Quantity of part indicated in ()



(1) Cupola Hatch Pin
BRA003-403R



(1) Cupola Machine Gun Rail
BRA003-404R



(1) Fire Extinguisher
BRA003-405R



(1) Turret Loader's Hatch Rain Cover
BRA003-408R



(1) Turret Loader's Hatch Hinge Arm
BRA003-409R



(4) Tow Shackle
BRA003-410R



(4) Tow Shackle Pin
BRA003-411R



(1) Turret Vent Cover Bullet Splash
BRA003-413R



(1) Travel Lock Vent Cover
BRA003-418R



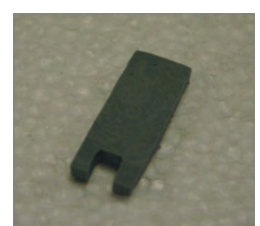
(1) Close Defense Port
BRA003-419R



(2) Engine Hatch Hinge Base
BRA003-424R



(2) Engine Hatch Hinge Arm
BRA003-425R



(1) Travel Lock Arm
BRA003-426R



(1) Travel Lock Pin
BRA003-427R



(1) Travel Lock Seat
BRA003-428R



(1) Mantlet Machine Gun
BRA003-429R



(3) Track Tension Access Cover - Large
BRA003-436R



(1) Access Cover - Small
BRA003-437R

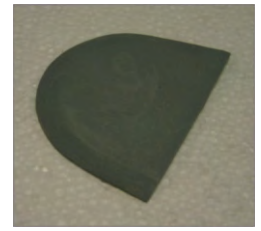
Panther Ausf G - Parts

Bag 3 Contents (45 Parts - 70 Pieces) Continued

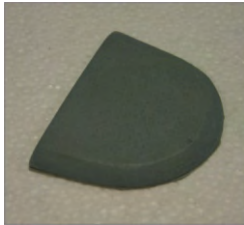
Note : Quantity of part indicated in ()



(1) Infrared Coupler
Cover
BRA003-438R



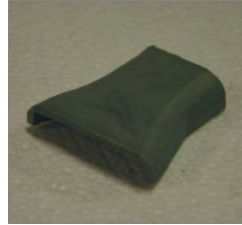
(1) Mantlet Back
Side - Left
BRA003-442R



(1) Mantlet Back
Side - Right
BRA003-443R



(1) Antennae Mount
BRA003-447R



(1) Driver's Periscope
Cover
BRA003-449R



(1) Driver's Periscope
Cover Bolt Ring
BRA003-450R



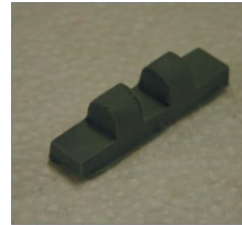
(1) Rear Thickening
Plate - Left
BRA003-451R



(1) Rear Thickening
Plate - Right
BRA003-452R



(2) Rear Thickening
Plate - Lower
BRA003-453R



(1) Front Hatch
Hinge Base
BRA003-439R



(1) Front Hatch
Hinge
BRA003-440R



(1) Barrel Elevation
Rotate Piece
BRA003-456R



(1) 1/4" x 2 1/2" Bolt
and 1/4" Nut
BRA003-457R



(1) Rear Turret
Thickening Plate -
Left
BRA003-458R



(1) Rear Turret
Thickening Plate -
Right
BRA003-459R



(2) Front Thickening
Plate Lower
BRA003-460R



(2) Front Thickening
Plate - Upper
BRA003-461R



(3) Tripod Mount
BRA003-462R



(3) Lifting Ring
BRA003-463R



(1) Tow Pin
BRA003-464R



(2) Mantlet Stop
BRA003-465R



(1) Head Light
BRA001-636R



(1) Headlight
Bracket
BRA001-637R



(1) Hull Machine
Gun
BRA001-439R



(2) Periscope Cover
BRA002-408R



(4) Hinge Half
(Male)
BRA005-434R

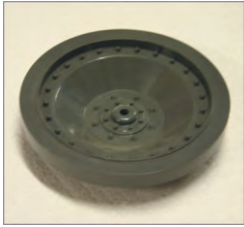


(4) Hinge Half
(Female)
BRA005-435R

Panther Ausf G - Parts

Bag 4 Contents (1 Part - 16 Pieces)

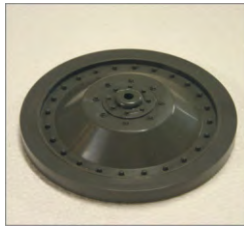
Note : Quantity of part indicated in ()



(16) Road Wheel
BRA003-601IP

Bag 5 Contents (1 Part - 16 Pieces)

Note : Quantity of part indicated in ()



(16) Road Wheel
BRA003-602OP

Bag 6 Contents (1 Part - 156 Pieces)

Note : Quantity of part indicated in ()



(156) Tack Pin
BRA003-901P

Bag 7 Contents (1 Part - 168 Pieces)

Note : Quantity of part indicated in ()



(168) Track Link
BRA003-902P

Panther Ausf G - Parts

Bag 8 Contents (1 Part - 1Piece)

Note : Quantity of part indicated in ()



(1) Barrel
BRA003-501T

Bag 9 Contents (1 Part - 1Piece)

Note : Quantity of part indicated in ()



(1) Storage Tube
BRA003-502T

Bag 10 Contents (1 Part - 1Piece)

Note : Quantity of part indicated in ()



(1) Mantlet
BRA003-724M

Bag 11 Contents (2 Parts - 4 Pieces)

Note : Quantity of part indicated in ()



(2) Drive Sprocket -
Inner
BRA003-730M

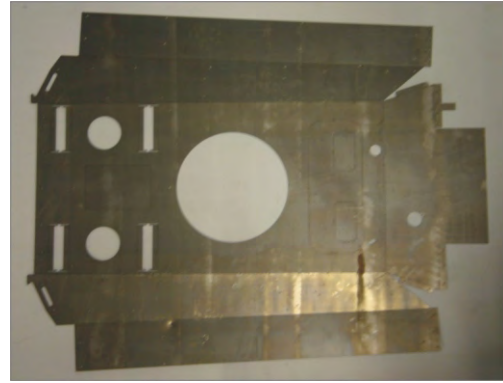
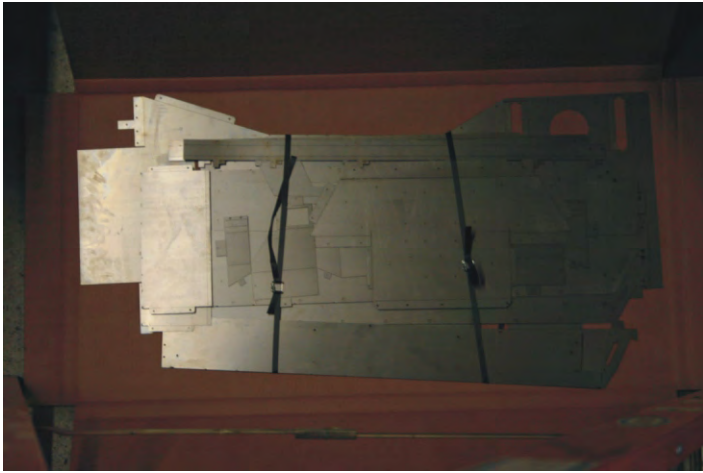


(2) Drive Sprocket -
Outer
BRA003-731M

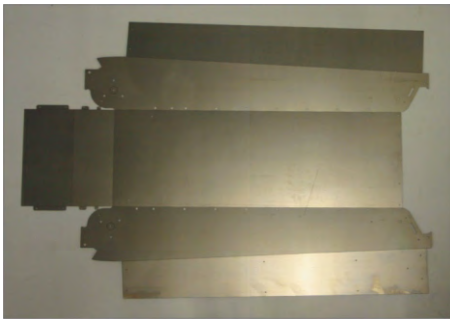
Panther Ausf G - Parts

Bag12 Contents (12 Parts - 13 Pieces)

Note : Quantity of part indicated in ()



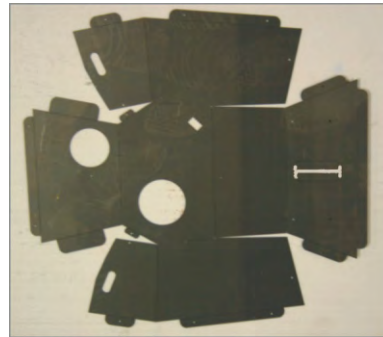
(1) Upper Deck
BRA003-703M



(1) Hull
BRA003-701M



(1)Hull Back
Plate
BRA003-702M



(1) Turret
BRA003-704M



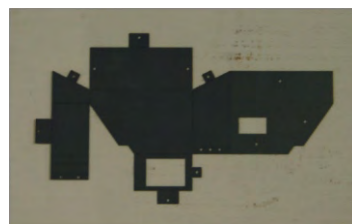
(1) Turret Bottom
BRA003-705M



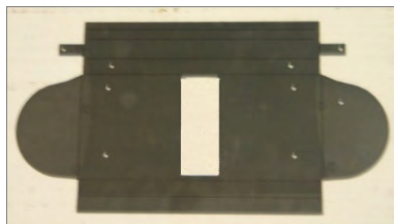
(1)Side Shield
Rail - Left
BRA003-712M



(1) Side Shield
Rail - Right
BRA003-713M



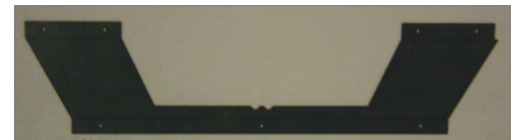
(2) Storage Bin
BRA003-718M



(1) Mantlet Back
BRA003-725M



(1)Forward Deck Brace
BRA003-721M



(1) Middle Deck Brace
BRA003-722M



(1) Rear Deck Brace
BRA003-723M

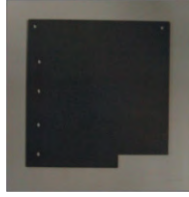
Panther Ausf G - Parts

Bag 13 Contents 23 Parts - 38 Pieces)

Note : Quantity of part indicated in ()



(1) Fender -
Left
BRA003-706M



(1) Fender -
Right
BRA003-707M



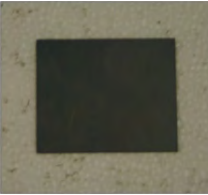
(2) Muffler Cover
BRA003-715M



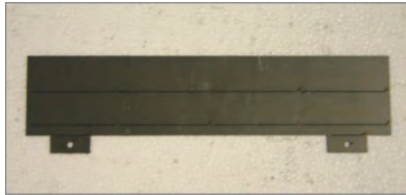
(2) Muffler
Bracket
BRA003-746M



(1) Fender Sides -
Two (2) Pieces
BRA003-717M



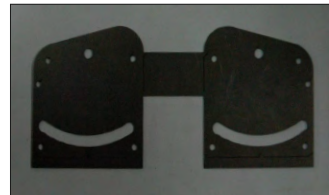
(2) Storage Bin
Lid
BRA003-720M



(1) Mantlet Debris Plate
BRA003-726M



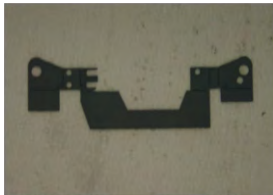
(2) Mantlet Side
BRA003-727M



(1) Barrel Elevation
Guide
BRA003-729M



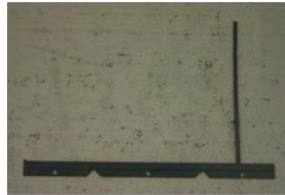
(8) Drive
Sprocket Spacer
BRA003-732M



(1) Travel Lock
Base
BRA003-733M



(1) Travel Lock
Body
BRA003-734M



(1) Jack Block
Bracket
BRA003-735M



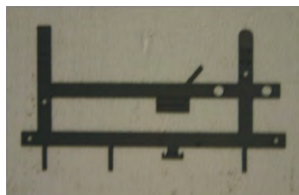
(1) Track Cable
Bracket
BRA003-736M



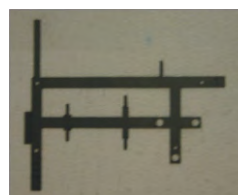
(1) Left Pry Bar
Bracket
BRA003-737M



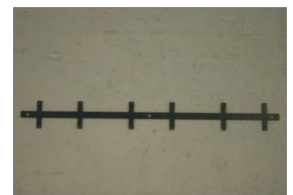
(1) Right Pry Bar
Bracket
BRA003-738M



(1) Axe Bracket
BRA003-739M



(1) Shovel Bracket
BRA003-740M



(2) Extra Track
Bracket
BRA003-741M



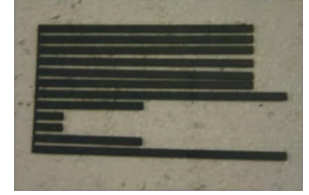
(2) Storage Tube
Bracket
BRA003-742M



(2) Rear Tow Cable
Bracket - Two (2) Pieces
BRA003-743M



(2) Turret Loader's
Hatch Bracket
BRA003-744M



(1) Fender and Storage
Bin Ribs - One (1) set
BRA003-745M

Panther Ausf G - Parts

Bag 14 Contents (4 Parts - 4 Pieces)

Note : Quantity of part indicated in ()



(2) Side Shield
Type A
BRA003-708M



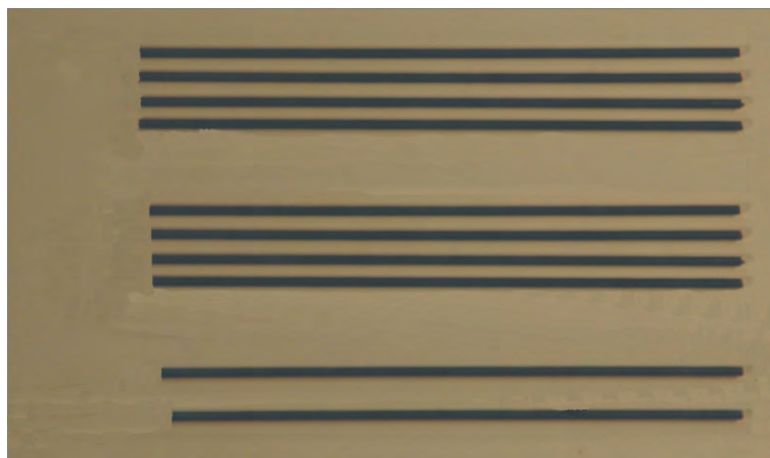
(2) Side Shield
Type B
BRA003-709M



(6) Side Shield
Type C
BRA003-710M

Bag15 Contents (4 Parts - 10 Pieces)

Note : Quantity of part indicated in ()



19 11/16" Main Axle #1 - 4 Pieces - BRA003-801M

19 7/16" Main Axle #2 - 4 Pieces - BRA003-802M

19 3/16" Drive Axle - 1 Piece - BRA003-803M

19 5/16" Idler Wheel Axle - 1 Piece - BRA003-804M

Bag 16 Contents (1 Part - 1 Piece)

Note : Quantity of part indicated in ()



(1) Spacer Material - 40" Length
BRA003-806T

Bag 17 Contents (1 Part - 22 Pieces)

Note : Quantity of part indicated in ()



(22) 1/4" Push Nut
BRA001-807M

Panther Ausf G - Parts

Bag 18 Contents (1 Part - 240 Pieces)

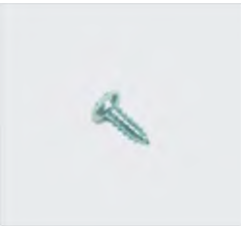
Note : Quantity of part indicated in ()



(240) 1/8" x 5/16"
Aluminum Pop Rivets
BRA001-809M

Bag 19 Contents (1 Part - 20 Pieces)

Note : Quantity of part indicated in ()



(20) #6 1/2" (Sheet Metal)
BRA001-810M

Bag 20 Contents (1 Part - 6 Pieces)

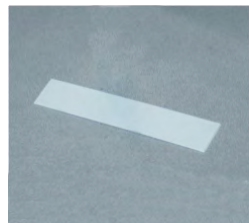
Note : Quantity of part indicated in ()



(6) 1/4" x 1/2" long
Wooden Dowel
BRA003-805P

Bag 21 Contents (1 Part - 1 Piece)

Note : Quantity of part indicated in ()



1 3/4" x 3 3/4" x 1/16"
Styrene
BRA003-811P

Panther Ausf G - Parts

Bag 22 Contents (1 Part - 1 Piece

Note : Quantity of part indicated in ()



(1) Instruction CD
BRA003-ICD

Panther Ausf G

Assembly Instructions

General Instructions

The concept behind a Field of Armor model kit is one in which you bend metal at pre-cut areas to form the various parts of a vehicle or tank.

When these parts are bent into place tabs and corresponding holes will line up allowing pop rivets or screws to be inserted to hold the assembly together.

All metal parts will follow this basic method of bending and fastening in order to take the metal parts from a 2D state into a 3D part

1. Check that you have received all parts for your new 1/6 scale model of the Panther. Go to Field of Armor's website at "www.fieldofarmortanks.com" for a complete list of all parts.
2. Wipe down all metal parts with a laquer thinner or acetone solution- Make sure when doing so that there are open flames or embers that may cause a fire while doing this.
3. At certain stages of assembly you may want to pre-paint some areas so that you don't have to dis-assemble parts of your work later. For example all the running gear pieces, the Chassis side wall they install against and the well under the fenders. **NOTE:** DO NOT paint any surface that you will be gluing something to.
4. Effort should be taken not to lose any of the perforated metal pieces that remain in the flat metal structures (please note that some of these pieces may have come loose during shipping) as some are used as actual parts such as hatches and doors and some are to remain in place.
5. Any additional parts and materials over and above those listed in the parts section of these Instructions and that may be obvious in the instruction photographs are the responsibility of the purchaser.
6. Should you receive a chassis that has come apart during shipping or comes apart from bending and re-bending (the seams are designed to be bent several times before coming apart) do not be too concerned as it can be easily repaired by using some scape 20 gauge metal cut into strips approximately $\frac{1}{2}$ " x 2" - 2 $\frac{1}{2}$ " long. Bend the strip to 90 degrees or to suit the angle being repaired and drill $\frac{1}{8}$ " holes to accept Pop Rivets. Place the angle over the area to be repaired spaced at 4" - 6" intervals and drill matching holes in the metal pieces being repaired. Secure with Pop Rivets. See Figures 6a, 6b and 6c below.

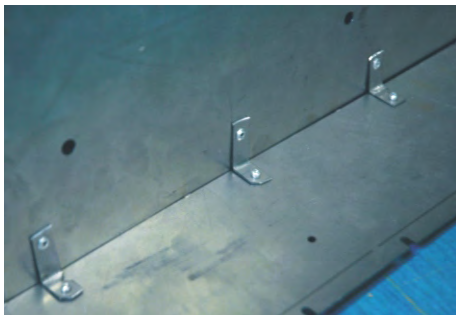


Figure 6a

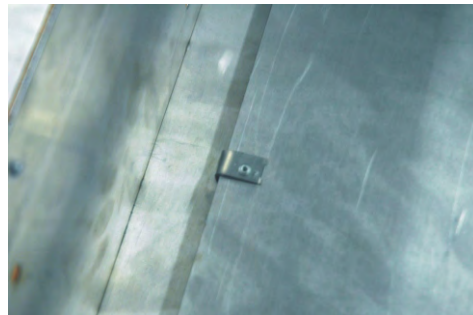


Figure 6b

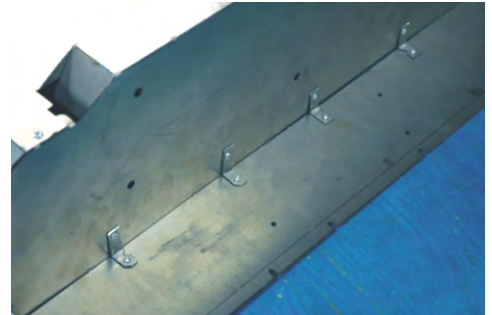


Figure 6c

Panther Ausf G

Assembly Instructions

General Instructions

7. Fill any holes and gaps with Bondo. Remove excess Bondo from surfaces using an exacto knife blade or something similar once it has set up but not hardened completely. When the Bondo has hardened sand smooth with a fine grit sandpaper.
8. It is recommended that the modeler use Super-glue when gluing Resin or Plastic Parts to other Resin or Plastic parts. When gluing Resin or Plastic Parts to Metal make sure that the Metal is free of grease and/or oil and glue using Epoxy.
9. Some Resin parts when they come out of the molds tend “naturally” to take on a slight curve - should you encounter any such parts in your kit this can be eliminated by applying moderate heat and adjusting the part to its proper configuration.
10. For handles (not provided) to Engine Access Doors, Commander’s Hatch (Cupola), Combat Compartment Access Doors and top of Superstructure Access Hatches it is suggested the modeler drill holes in the metal (in the approximate location shown in the photographs) to accept a bent 1/16th inch copper wire and secure in place with Epoxy (See Figure A).



Figure A

11. Using a piece of scrape metal it is advisable to create a stop for the Engine Access Doors , Combat Compartment Access Doors and top of Superstructure Access Hatches and the Brake Access Covers by Pop Riveting it to the underside of the opening and protruding into the opening (see Figure B). On larger doors (i.e. Engine Cover Deck Doors) or those that don’t seat properly you may want to create a stop on the two sides of the opening as well.

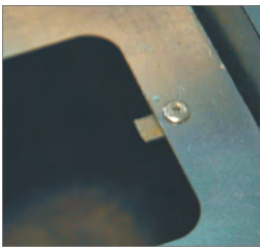


Figure B

12. Some parts will require sanding before application.
13. Sand the metal surface area to which a part is to be applied and also when securing metal to metal. This will ensure a more secure bond.
14. All references to left and right assumes you are sitting in the tank facing forward.

Panther Ausf G

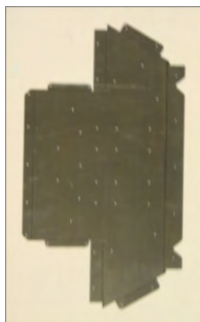
Assembly Instructions

Hull and Storage Bins

Step 1. Locate metal Hull and the metal Hull Back Plate. See Figure 1a and 1b.



(1) Hull
BRA003-701M



(1)Hull Back
Plate
BRA003-702M

NOTE: In the earlier production models the Hull Back Plate was an integral part of the Hull.

Figure 1a

Figure 1b

Step 2. Making sure the square hole in the Hull Back Plate is to the left side of the tank, slide the bottom flange under the Hull and align the five (5) holes (see Figure 2a). Secure it in place using Pop Rivets (see Figure 2b).

NOTE: In the earlier production models the Hull Back Plate was an integral part of the Hull and so this Step can be ignored if you have an early production model.

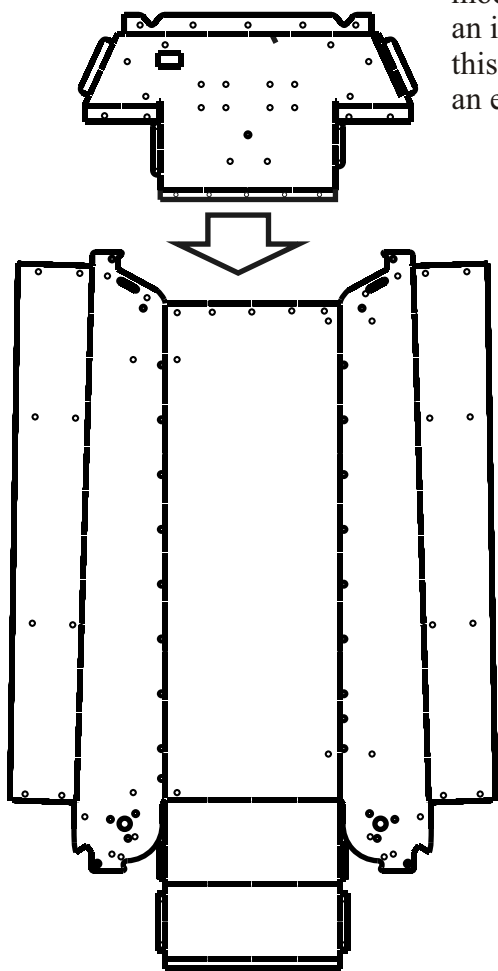


Figure 2a

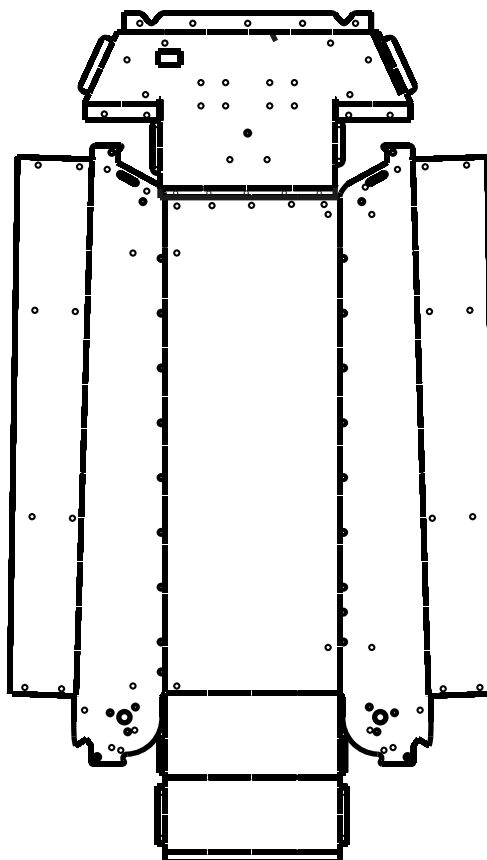


Figure 2b

Hull and Storage Bins

Step 3. Bend all the Tabs indicated in Figure 3a below in accordance with the Note 1. Bend the Rear Plate and the Front Hull Plate up at the bend lines and secure with Pop Rivets in accordance with Note 2. Locate the outer Panels and bend them back 90 degrees toward the inside of the Hull in accordance with Note 3. It is important that the tabs at the low part of the Rear Hull Panel lap over on top of the Outer Panels (see Figure 4a).

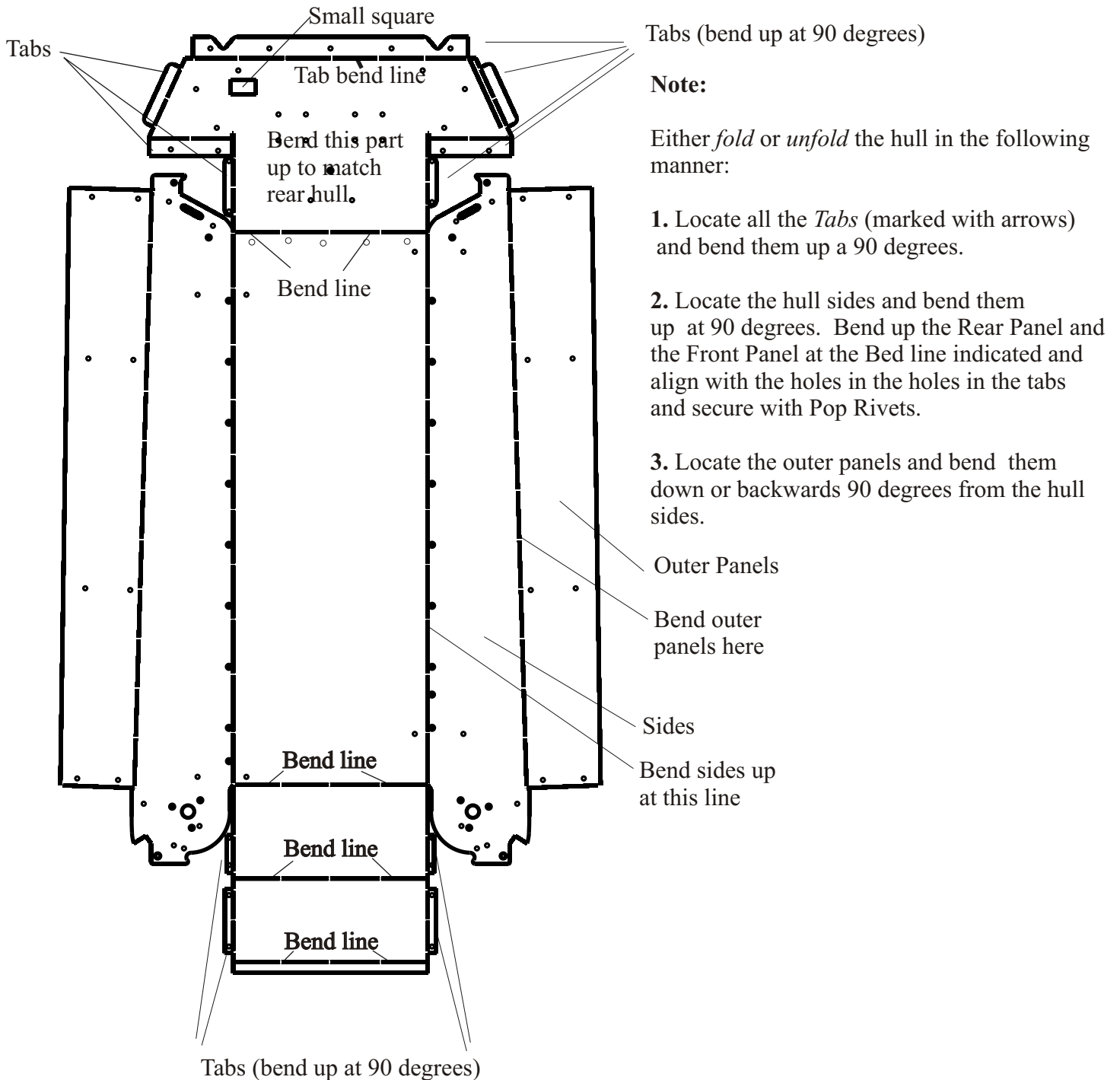


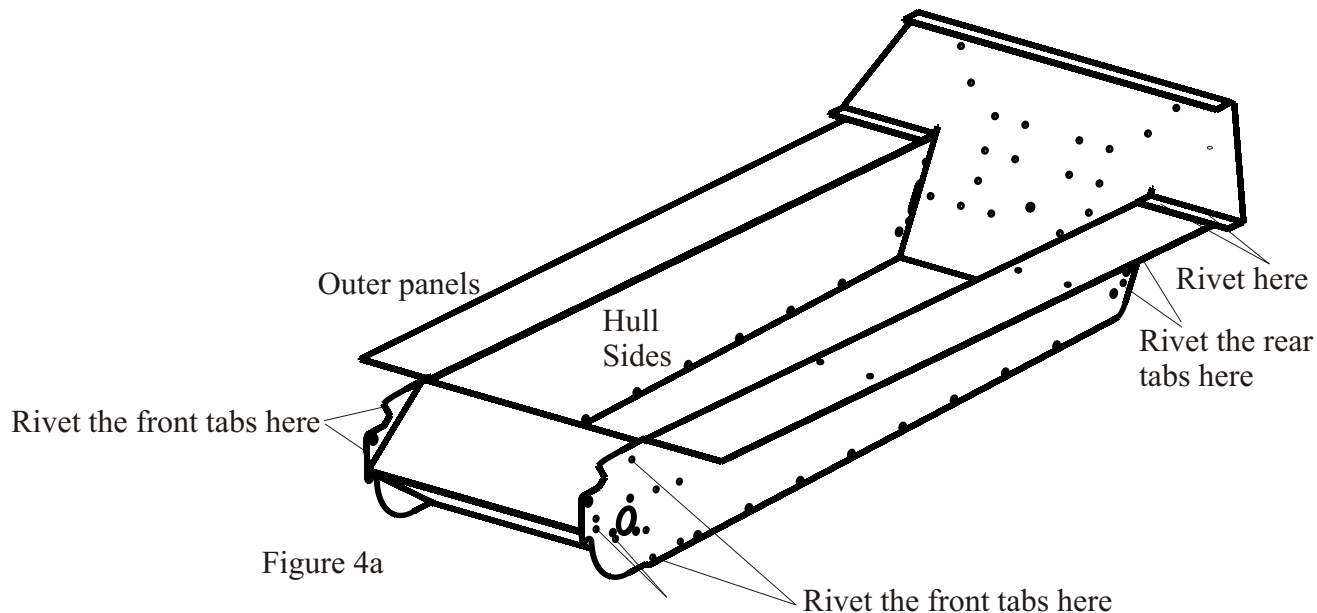
Figure 3a

Panther Ausf G

Assembly Instructions

Hull and Storage Bins

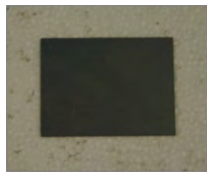
Step 4. When the Hull Assembly is completed it should look like Figure 4a below.



Step 5. Locate the two (2) Storage Bins and the two (2) Storage Bin Covers and note the identification of surfaces in Figure 5a. NOTE: STEPS 5 THROUGH 7 ARE FOR THE RIGHT SIDE STORAGE BIN - FOR THE LEFT SIDE STORAGE BIN SEE STEP 8.



(2) Storage Bin
BRA003-718M



(2) Storage Bin Lid
BRA003-720M

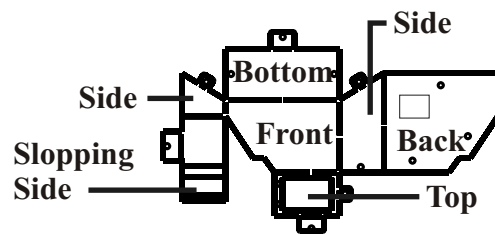
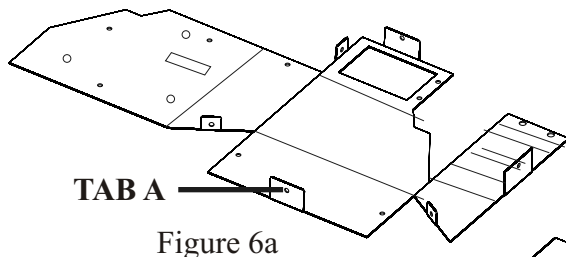
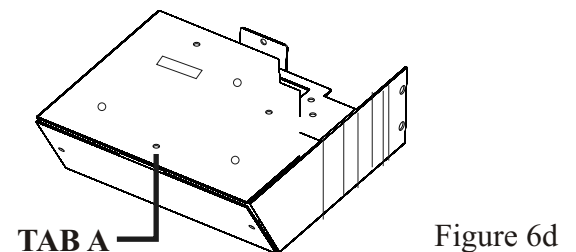
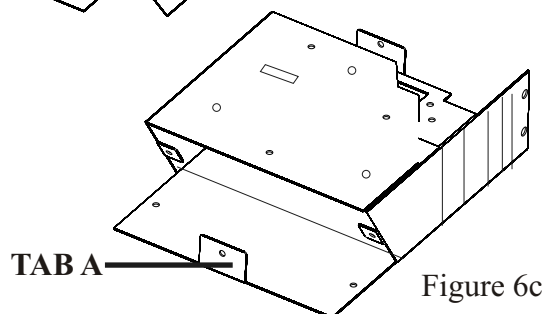
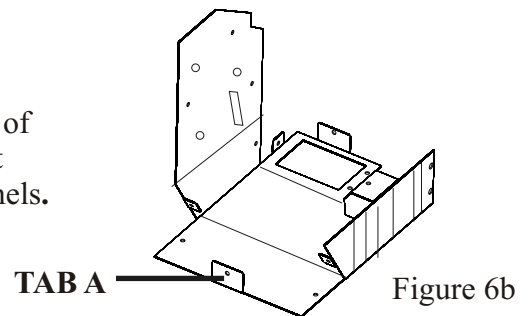


Figure 5a

Step 6. On one Storage Bin, with the exception of TAB A bend the Tabs up to 90 degrees (see Figure 6a). Bend TAB A approximately 110 degrees. Bend the Sides up to 90 degrees (see Figure 6b). Bend the back over to 90 degrees and align the holes with the tab on the other side (see Figure 6c) and secure with Pop Rivets, Bend the Bottom up so that TAB A slides under the Back (see Figure 6c). Align the three holes and secure with Pop Rivets (see Figure 6d)



NOTE: Adjust angles of tabs and panels to meet and match adjacent panels.



Panther Ausf G

Assembly Instructions

Hull and Storage Bins

Step 7. Fold the Sloped Side to match the profile of the front and back (see Figure 7a). Fold the Top over 90 degrees so the Tab slips under the Back (see Figure 7b) and the end of the top with the holes in it is over the top of the Sloped Side. Align the holes and secure with Pop Rivets (see Figure 7c). When completed the Storage Bin should look like the one in Figure 7d.

NOTE: Some models come with only one Storage Bin having the Square Hole in the Back. In this instance this Storage Bin is to be installed on the Right Side of the tank to align with the Square Hole in the Rear Panel.



Figure 7a

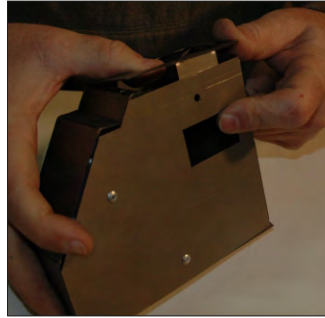


Figure 7b



Figure 7c

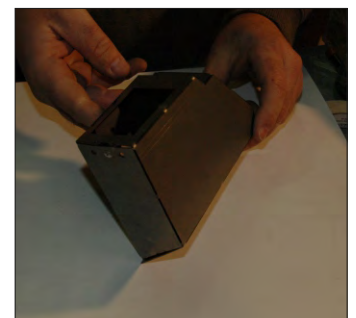


Figure 7d

Step 8. You have now created the Storage Bin for the Right side of the tank. You must now create the storage Bin for the Left side and you do that creating the mirror image of the Right Storage Bin which means bending the second storage Bin piece in the opposite directions to the one you have just completed and following Steps 5 through 7.

Step 9. Locate the four (4) Hinge Halves (Male) and Hinge Halves (Female) and create four (4) Hinge Assemblies (see Figure 8a).



(4) Hinge Half
(Male)
BRA005-434R



(4) Hinge Half
(Female)
BRA005-435R



Hinge Assembly
Figure 9a

Step 9. Attach the Bin Lid to the Storage Bin using two (2) Hinge Assemblies



Figure 9a



Figure 9b

NOTE: On the earlier iterations of the Panther Ausf G the hinge configuration for the installation of the of Storage Bin Lid will be as shown in Figure 9b

Panther Ausf G

Assembly Instructions

Hull and Storage Bins

Step 10. Locate the Fender and Storage Bin Ribs Piece. Break off the six (6) pieces that are the ribs for the Storage Bins (see NOTE below). Secure the Ribs to the Storage Bins in the configuration shown in Figure 10a using Epoxy



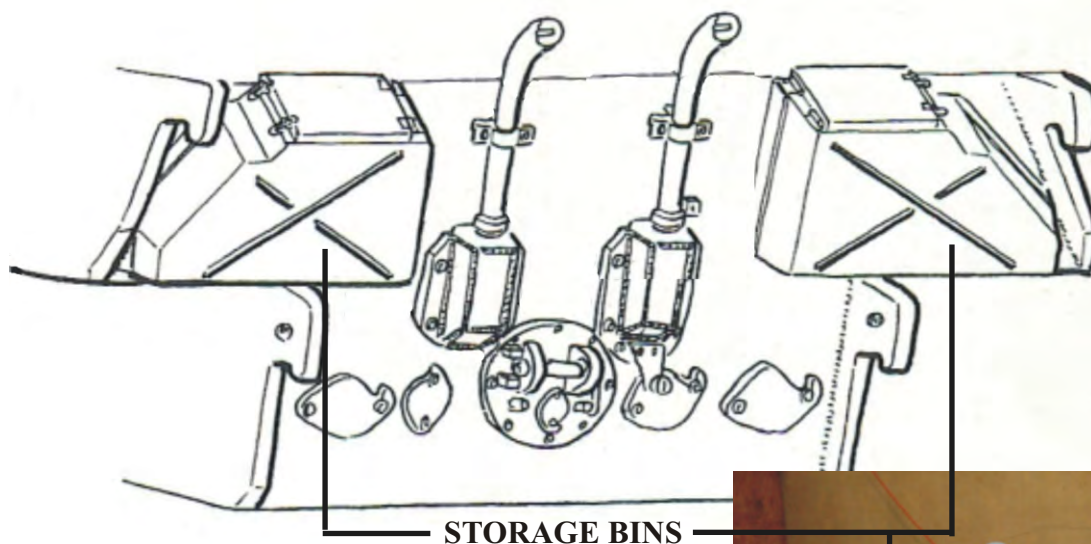
NOTE: Install the six detail strips (ribs) contained within the box on the Left to the Storage Bins as shown in Figure 10a to the Right.

(1) Fender and Storage Bin Ribs - One (1) set
BRA003-745M

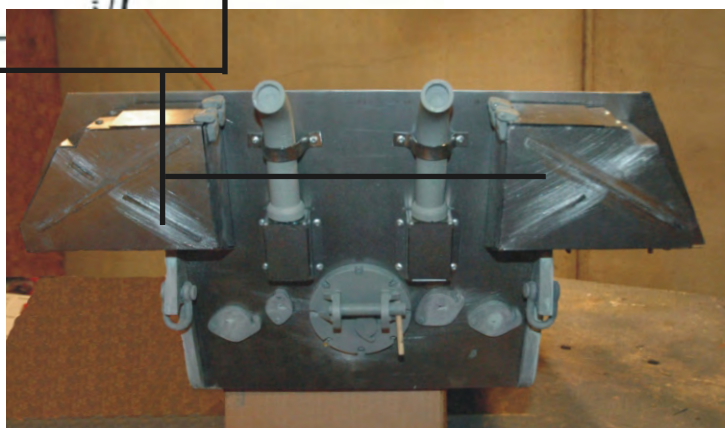


Figure 10a

Step 10. Install the Storage Bins to either side of the Rear Panel. Align the holes in the Rear Panel with those in the Storage Bin and secure with Pop Rivets. You will note the oversized holes in the Rear Panel. They are there to accommodate the Rivets that have been installed to secure the Storage Bin together in Step 7.



NOTE: Some models come with only one Storage Bin having the Square Hole in the Back. In this instance this Storage Bin is to be installed on the Right Side of the tank to align with the Square Hole in the Rear Panel.

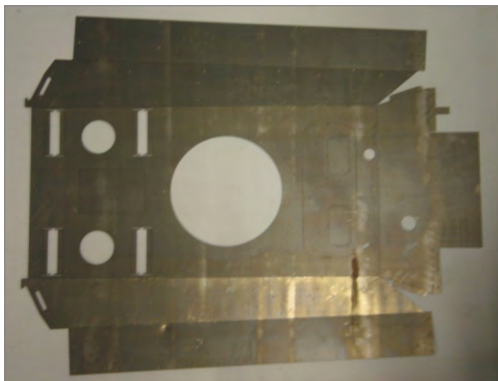


Panther Ausf G

Assembly Instructions

Upper Deck

Step 1. Locate the Upper Deck Piece (see Figure 1a). This piece will come folded in the kit and when opened and laying flat it would look like the figure below.



NOTE: view is of the top of the Upper Deck laying flat. The Upper Deck that comes to you in the kit is with the top side facing down and the sides folded in.

(1) Upper Deck
BRA003-703M

Figure 1a

Step 2. Before unfolding this piece bend the Tabs on the Front Panel to approximately 45 degrees (see Figure 2a). Fold Side B outward until it is at an angle of approximately 30 degrees from the flat surface on which you are working (see Figure 2b).

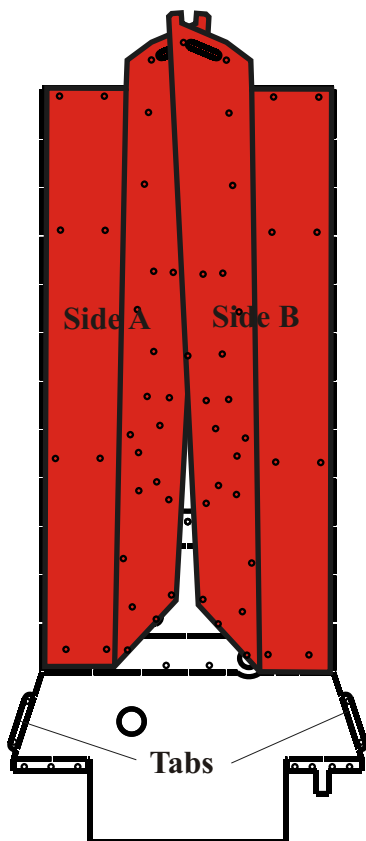


Figure 2a

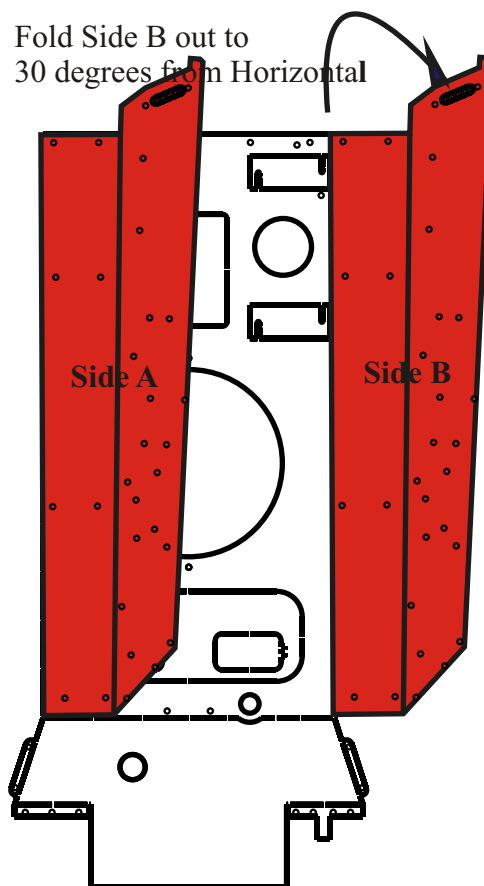


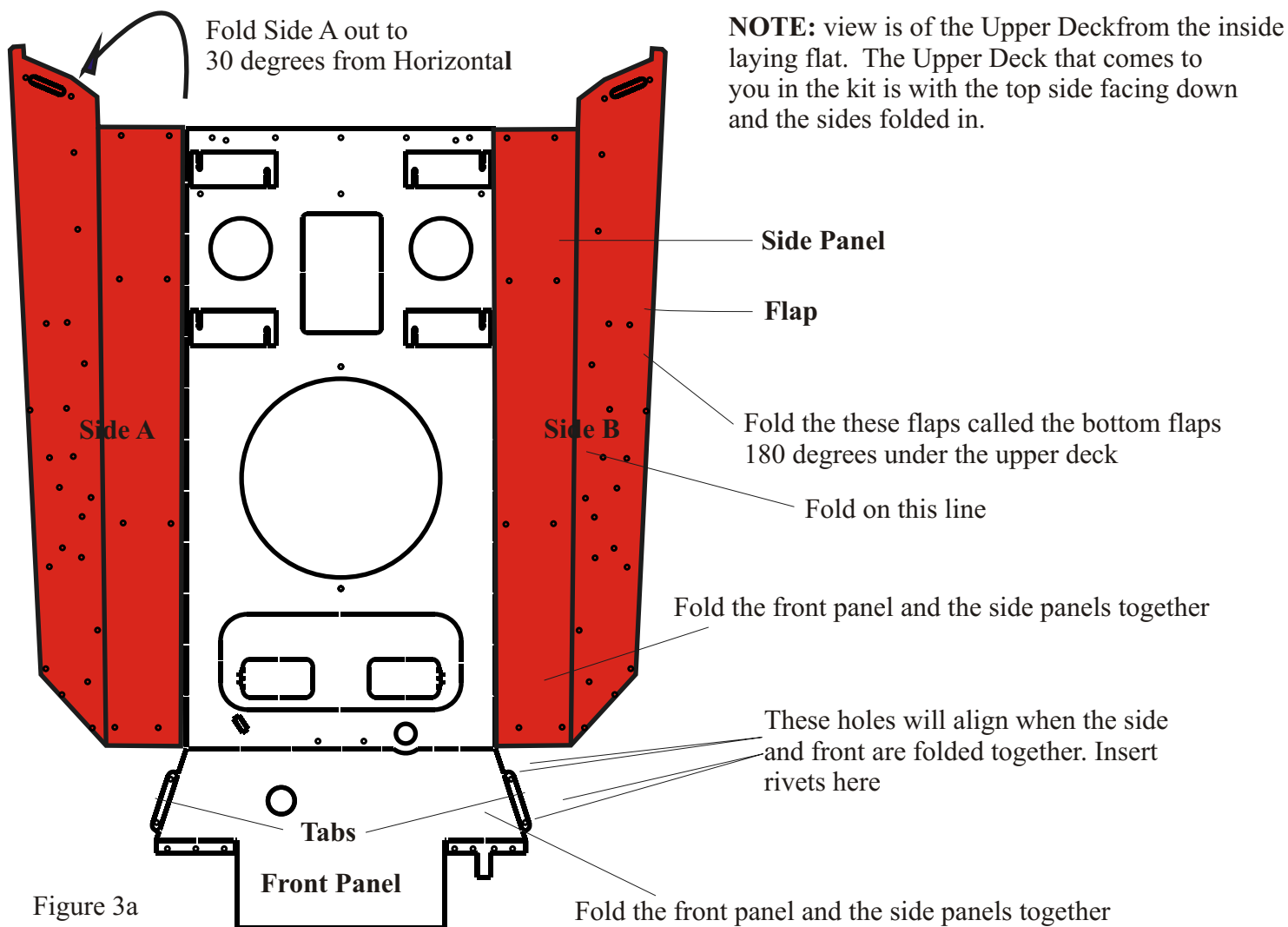
Figure 2a

Panther Ausf G

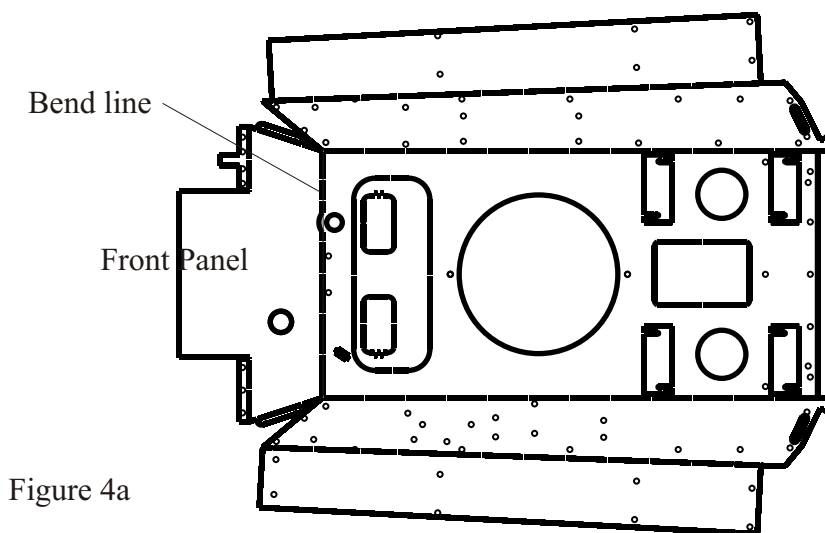
Assembly Instructions

Upper Deck

Step 3. Fold Side B outward until it is at an angle of approximately 30 degrees from the flat surface on which you are working (see Figure 3a).



Step 4. Fold Front Panel upward until it meets the Side Panel A and Side Panel B and the hole in the Tabs align with the hole in the Sides. Secure with Pop Rivets from the outside (see Figure 4a).

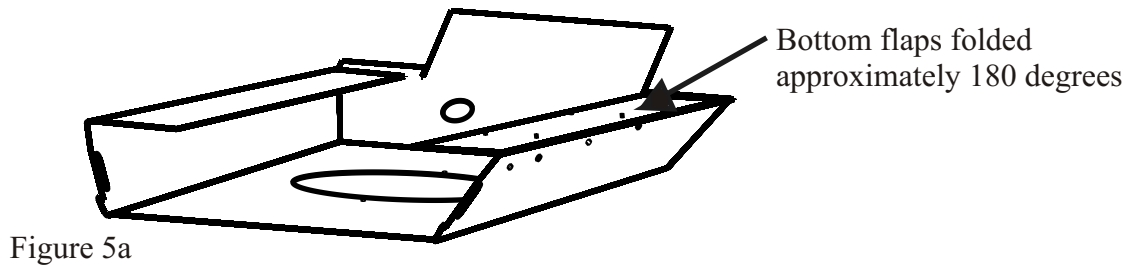


Panther Ausf G

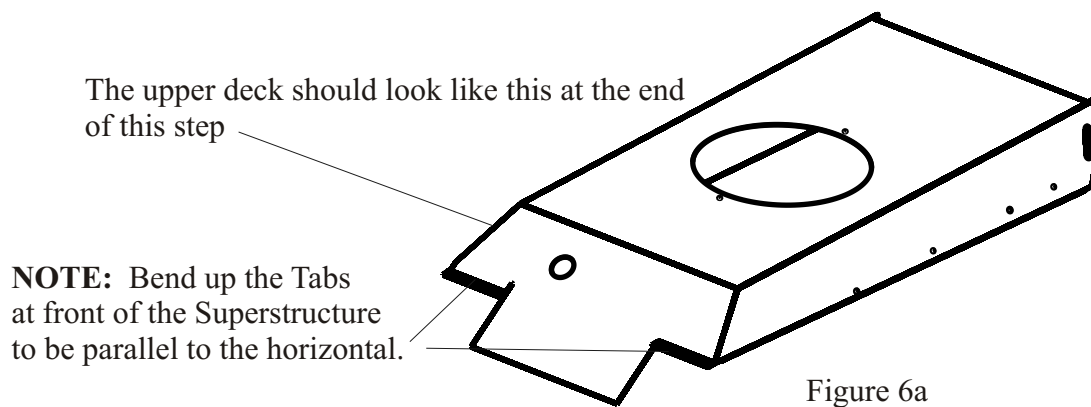
Assembly Instructions

Upper Deck

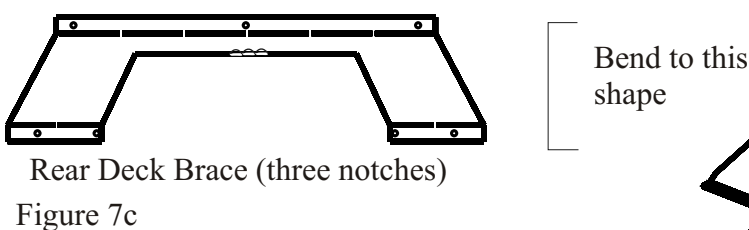
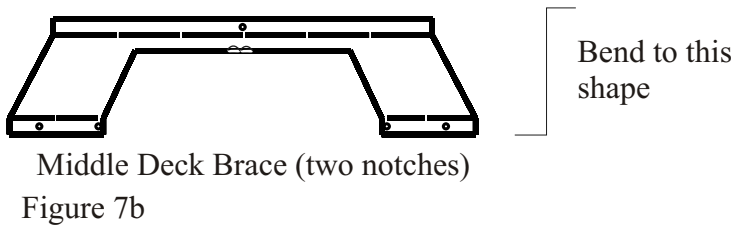
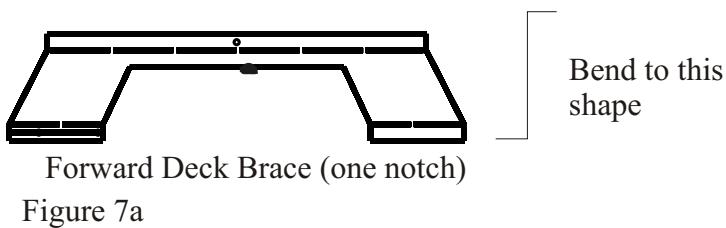
Step 5. Fold the Flaps on either side inward until they are horizontal (see Figure 5a).



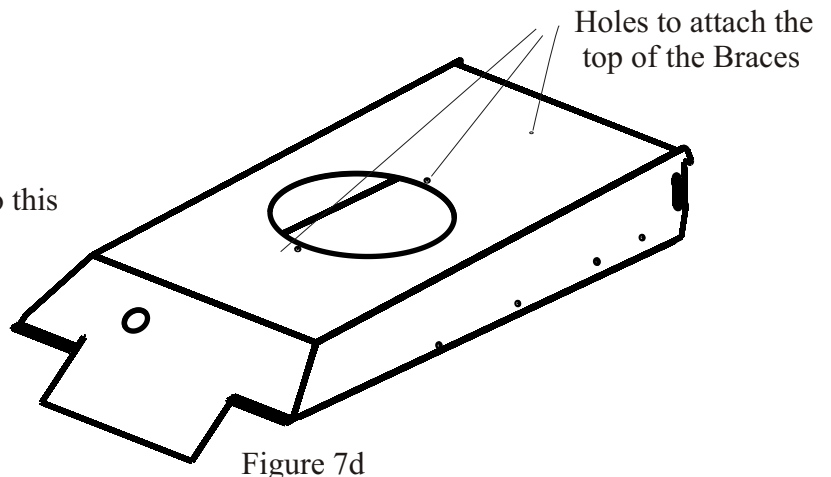
Step 6. At this point in the assembly your Superstructure should look as Figure 6a below.



Step 7. Locate the Forward Deck Brace (see Figure 7a), the Middle Deck Brace (see Figure 7b) and the Rear Deck Brace (see Figure 7c) and bend them to the configurations shown.



NOTE: The Forward Deck Brace and the Middle Deck Brace have a single hole in the top flange to attach to the inside of newly created Superstructure. The Rear Deck Brace has three holes in the top flange to attach to the top of the Superstructure. Each Brace has two (2) holes each in the bottom flange of each leg which will align with the holes in the Flaps of the Superstructure. For the location of the holes in the Superstructure see Figure 7d.



Panther Ausf G

Assembly Instructions

Upper Deck

Step 8. Install the Braces into the Superstructure in the locations shown in Figure 7a and secure the top flanges in place using Pop Rivets (Pop Rivets should be installed from the outside of the Superstructure).

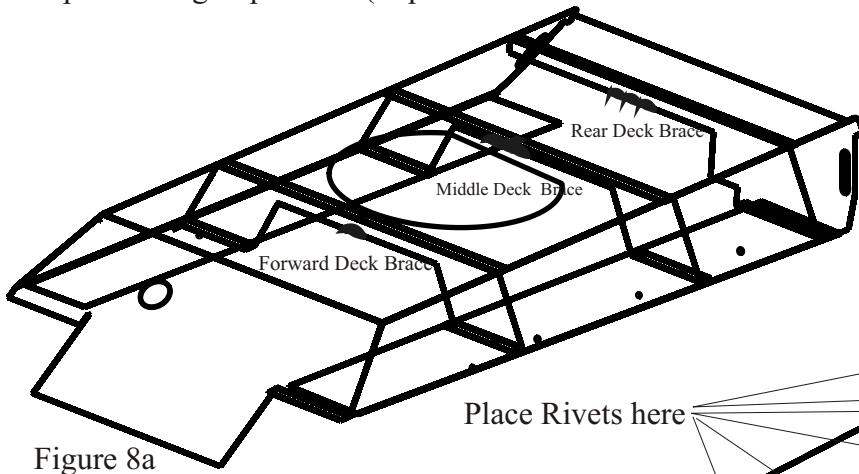


Figure 8a

Step 9. Attach braces from the bottom onto the bottom flaps

Place Rivets here

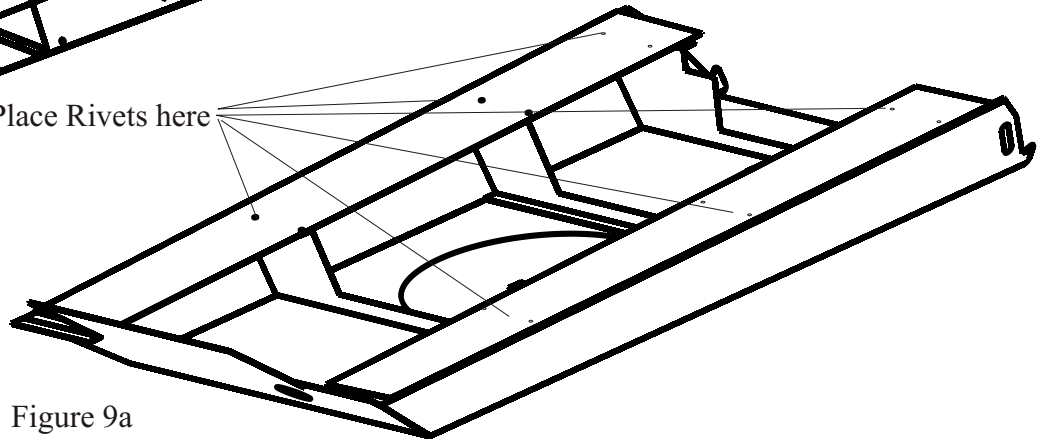


Figure 9a

Step 9. The Assembly should now look like the on in Figure 9a.

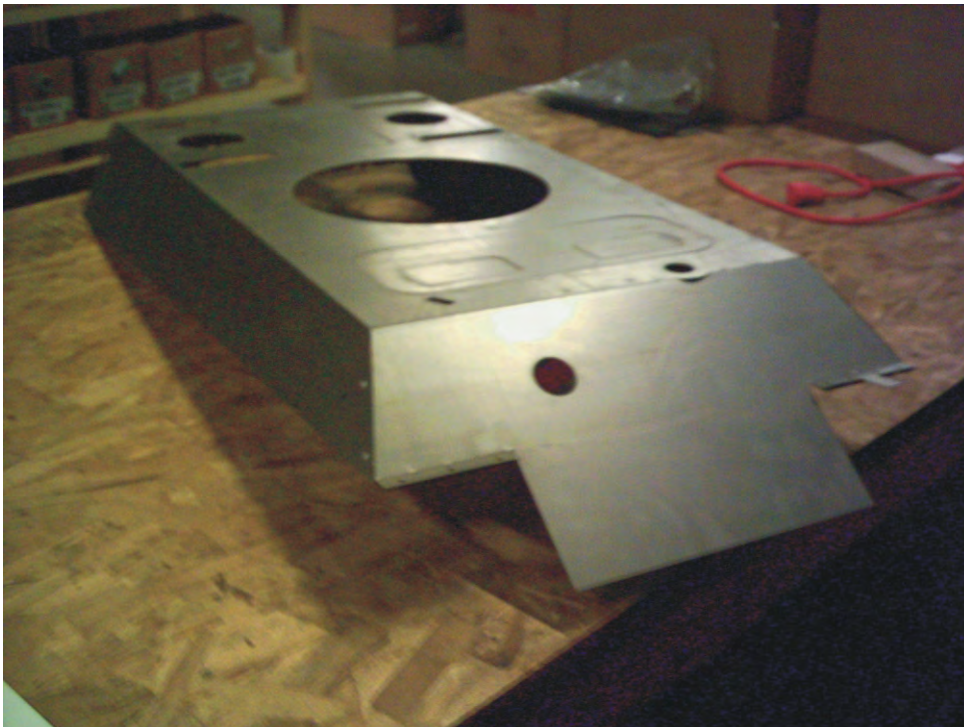


Figure 9a

Step 10. Before attaching the Upper Deck Assembly to the Hull (Chassis) Assembly you will need to install the Axles which is the next Step.

Panther Ausf G Assembly Instructions

Axles, Final Drive Cover, Track Alignment Wheel and Spacers

Step 1. Slide axles through the holes in the lower body (see Figure 1a and 1b).

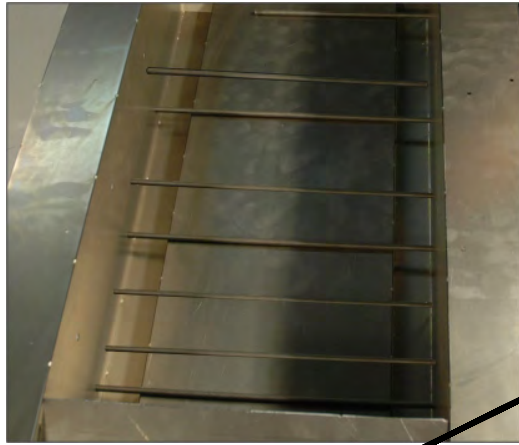
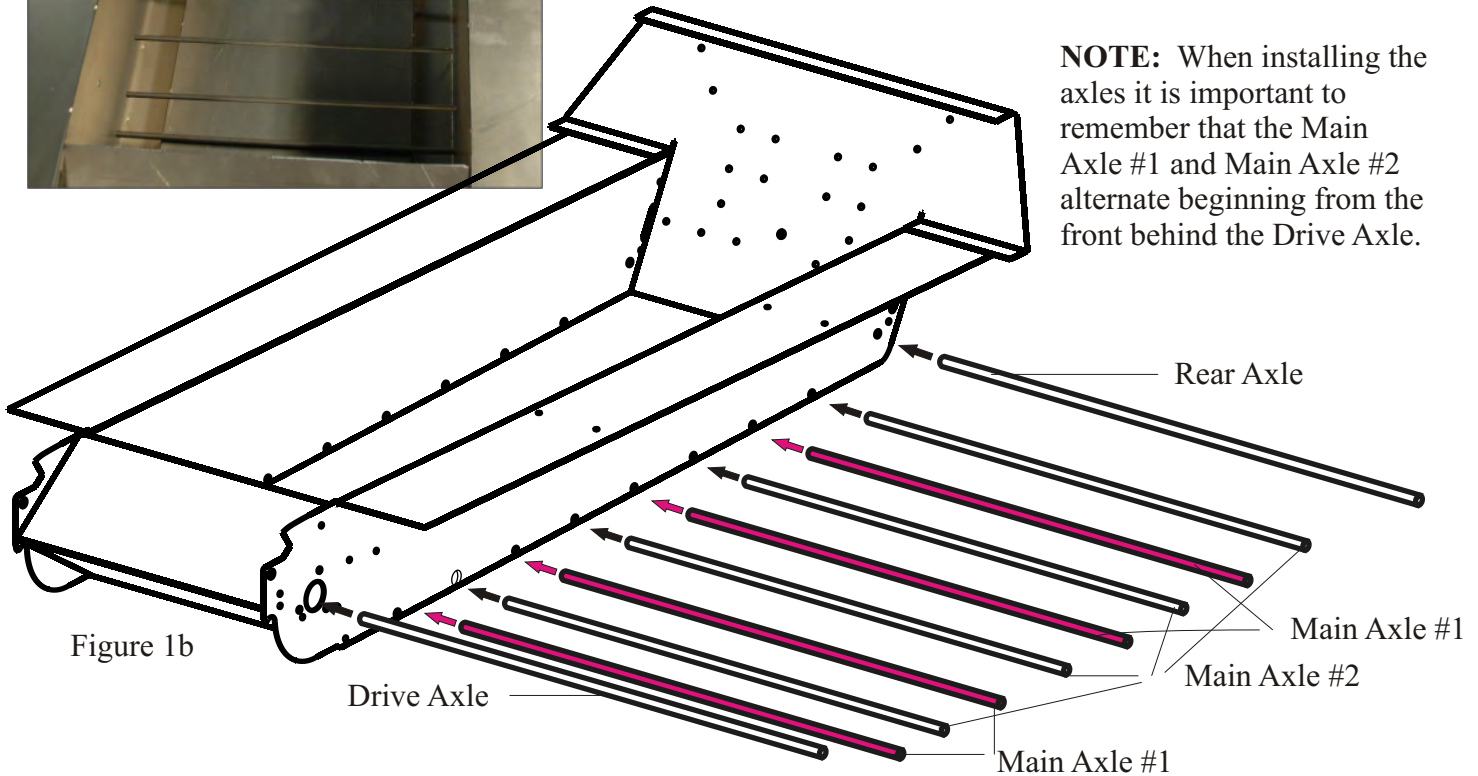


Figure 1a



NOTE: When installing the axles it is important to remember that the Main Axle #1 and Main Axle #2 alternate beginning from the front behind the Drive Axle.

Step 2. Locate the Final Drive Covers and install one on either side of the Hull. Hold the Final Drive Cover in place so that the Drive Axle hole is in the center of the hole in the Final Drive Cover (see Figure 2a) and mark the screw holes on the back. Pre-drill the Final Drive Cover for the screw and then secure in place with Epoxy and screws. Locate the Track Alignment Wheels (see Figure 2b) and secure it to the Final Drive Cover in the location shown in Figure 2a.

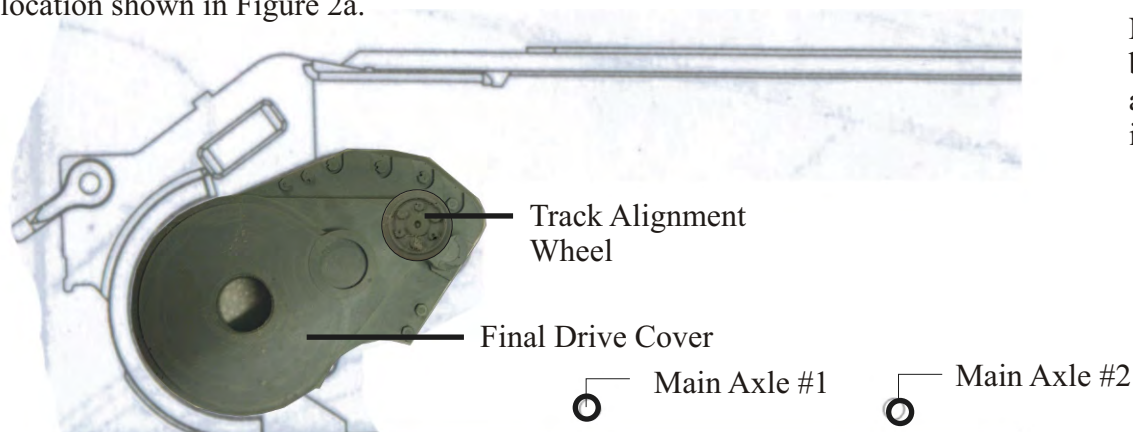


Figure 2a

NOTE: Since the Wheels are not going to be installed at this time the axles need to be held in place manually. They can be held in place with spacer material (see Step 3) or any other means you might devise

NOTE: This step can be done before or after the Drive Axle is installed.

Figure 2b



(2) Track Alignment Wheel
BRA003-417R

Panther Ausf G

Assembly Instructions

Axles, Final Drive Cover, Track Alignment Wheel and Spacers

Step 3. Locate the Spacer Material.



(1) Spacer Material - 40" Length
BRA003-806T

Step 4. Cut Spacer A to go over the Main Axles, both #1 and #2. They go between the Metal Chassis and the Inner Wheels for both Axles. Cut Spacer B to go between over Main Axle #2 between the Inside Wheel and the Outside Wheel. Cut spacer C to go over the Rear Axle between the Metal Chassis and Idler Wheel Assembly,

NOTE: There is no Spacer for the Front Axle, the Drive Sprockets go up against the Final Drive Cover. Also there no spacer between the Inside Wheel and the Outside Wheel that fit on all Main Axles #1 - the two Wheels fit up against one another.



1.125" or 1 1/8"

Spacer A

Main Axle #1 between the Metal Chassis and the Inside Wheel.
Main Axle #2 between the Metal Chassis and the Inside Wheel.



1.375" or 1 3/8"

Spacer B

Main Axle #2 between the Inside Wheel and the Outside Wheel.



1.875" or 1 7/8"

Spacer C

Rear Axle between the Metal Chassis and the Idler Wheel Assembly.

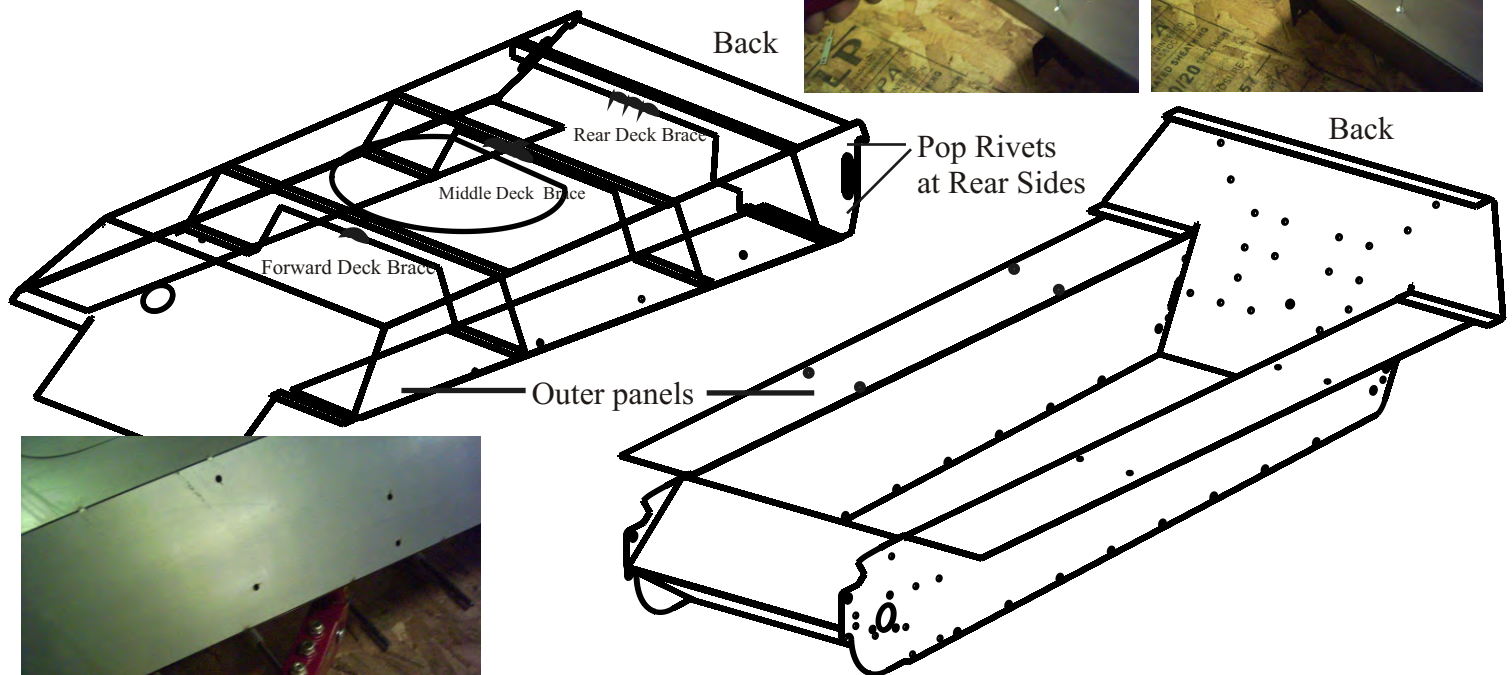
Panther Ausf G

Assembly Instructions

Upper Deck to Hull Connection

Step 1. With the Axles in place in the Hull you can now fit and secure the Upper Deck to the Hull. This is a relatively simple procedure, simply place the Upper Deck onto the Hull and align the holes of each across the Back and in the Outer Panels (see Step 3 under the Hull and Storage Bins Assembly procedures). There are also two hole at the rears sides that need to be secured. Secure with Pop Rivets

NOTE: There are several holes across the back to secure with Pop Rivets.



NOTE: Fasten the two Outer Panels on each side from underneath. If you do not do this at this stage you will need to remove the wheels to undertake this step.

Step 2. Your Assembly to this point should look like Figure 2a

NOTE: DO NOT secure the fronts of the “Outer Panels” where they meet and where the fenders will later be attached.



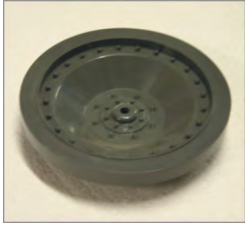
Figure 2a

Panther Ausf G

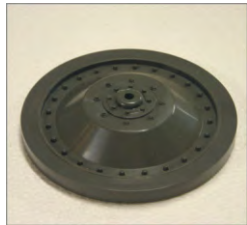
Assembly Instructions

Running Gear

Step 1. Locate the Wheels. There should be sixteen (16) Inner Wheels ("inny") (see Figure 1a) and sixteen (16) Outer Wheels ("outy") (see Figures 1b) When installing the wheels make sure that the open groove or hollow sides are placed to back or inside (see Figure 1c).



(16) Road Wheel
BRA001-601R



(16) Road Wheel
BRA001-601R



Figure 4c



Figure 4a

Inner "Inny" Wheel



Figure 4b

Outer "Outy" Wheel

NOTE; Both "inny" and "outy" wheels have a hollow side. We consider this to be the BACK side of the wheel.

Step 2. Since you already have the Axles installed you can move directly to the installation of the wheels. It is suggested to make this easier that you turn the tank over (see Figure 2a) so that the bottom is facing up. We will begin by installing the wheels in the following sequence and using the spacing material (as described earlier) where required. Begin by going to Step 3.



Figure 2a

Panther Ausf G

Assembly Instructions

Running Gear

Step 3. Locate the Drive Sprockets and Drive Sprocket Spacers. The drive gears are made of 12 gauge steel. There is an inner drive wheel that is solid and an outergear that has cut out detail. They are held together by four (4) inner spacers.



(2) Drive Sprocket - Inner
BRA003-730M



(2) Drive Sprocket - Outer
BRA003-731M



(8) Drive Sprocket Spacer
BRA003-732M

Step 4. Bend the Drive Sprocket Spacer (see Figure 4a to 90degrees along the long seam (see Figure 4b). Bend the tabs at either end up along the sides to 90 degrees (see Figure 4c). Per deck to the Chassis. Attach four (4) Drive Sprocket Spacers onto Drive Sprocket - Inner using Pop Rivets (see Figure 4d). Align the hole in the Drive Sprocket Spacers with holes in the Drive Sprocket - Outer and making sure the teeth on the two (2) Drive Sprockets are aligned secure in place with Pop Rivets (see Figure 4e).



Figure 4a



Figure 4b



Figure 4c



Figure 4d



Figure 4e

Step 5. The Drive Sprockets are now completed (see Figure 5a) and ready for installation. If you have used a length of Spacer Material to temporarily hold the axle in place remove it now and install the Drive Sprocket Assemblies onto the Drive Axle - one on each side (see Figures 4b and 4c). Secure in place with Push Nuts. Note that the Drive Sprocket Assemblies fit up against the Final Drive Covers (see Figure 5d).



Figure 5a



Figure 5b



Figure 5c



Figure 5d

Panther Ausf G

Assembly Instructions

Running Gear

Step 6. So that you don't have to go back to find out the axle number designation we are proving the line drawing shown in Figure 6a,

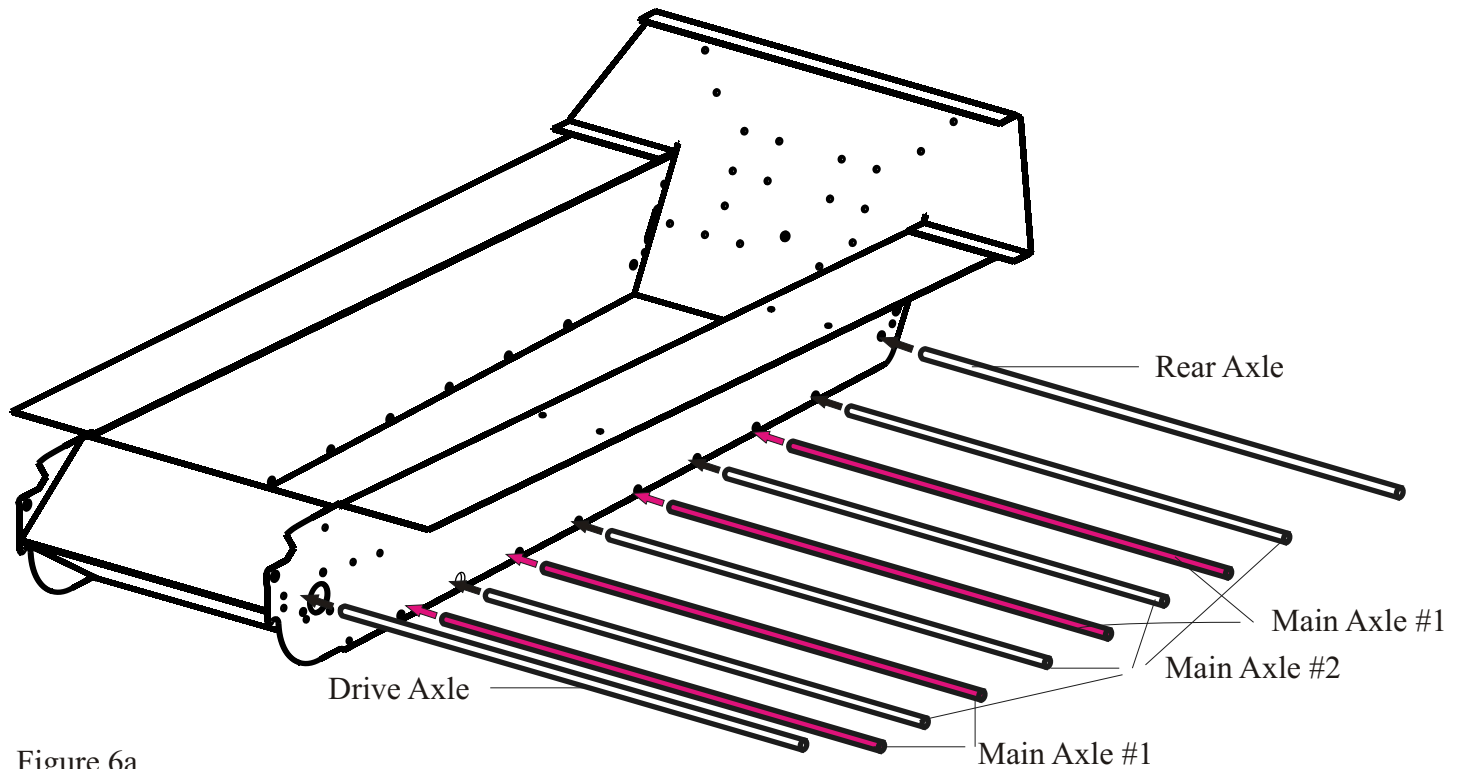


Figure 6a

Step 7. Install the one each of the Road Wheels (innys) onto each end (side) of the Main Axles #2 (see Figures 6a above and 7a and 7b) against the 1 3/8" Spacer Material and so that the back is facing outward and remembering that the back is the side with the groove or channel in it.

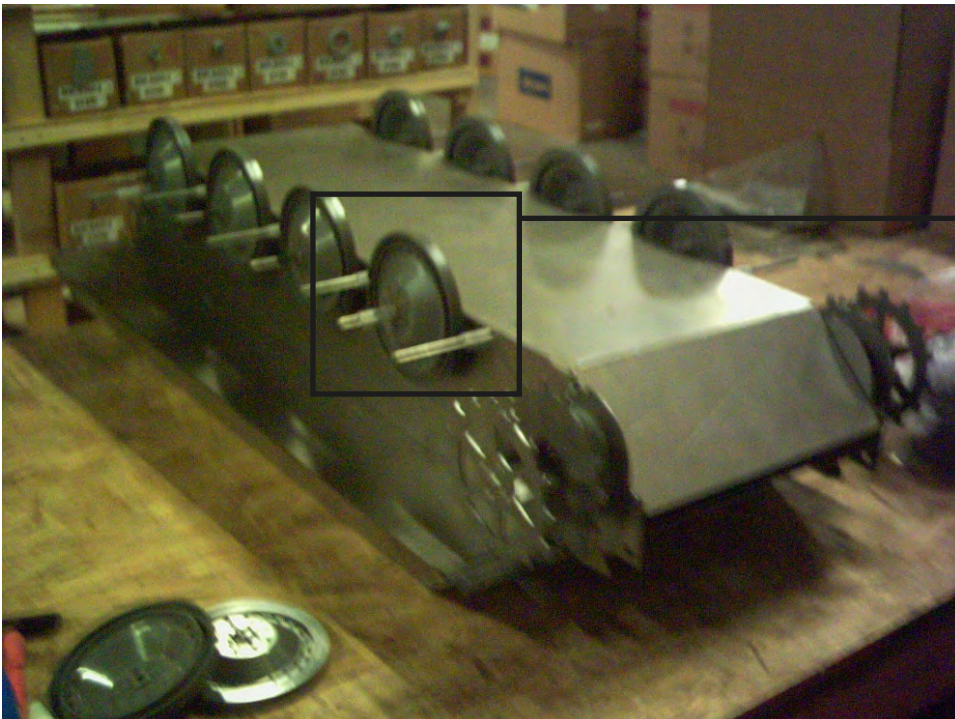


Figure 7a



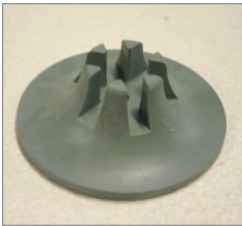
Figure 7b

Panther Ausf G

Assembly Instructions

Running Gear

Step 8. Before we continue any further we need to install the Idler Wheels. Each Idler Wheel comes in two (2) pieces, the Inner Idler Wheel and the Outer Idler Wheel and need to be assembled. Position the Outer Idler Wheel Piece over the Inner Idler Wheel piece so that the staves on the Outer wheel mesh with the grooves in the Inner Wheel and then push the two pieces together until they will come together no further (see Figures 9a and 9b). Although they fit together tightly it is a good idea to secure them together with Super Glue. Install the Idler Wheel Assemblies (one on each side) onto the Rear Axle against the 1 7/8" Spacer Material that you have already installed to hold the Rear Axle in place temporarily See Figure 8a). Secure with Push Nuts.



(2) Idler Wheel
Inner
BRA003-434R



(2) Idler Wheel
Outer
BRA003-435R



Figure 8a

NOTE:

At this point you before securing the Idler Wheels in place with Push Nuts you may want to refer to **Steps 10 and 11.**

Step 9. Install the one pair (see Figure 9a) each of the Road Wheels (outys) onto each end (side) of the Main Axles #1 (see Figure 6a for Axle locations). Install the 1 3/8" Spacer Material to Main Axles #2 and then install the remaining Road Wheels (innys) against the 1 3/8" Spacer Material (see Figures 9b and 9c and 9d).



Figure 9a

Double "outy" Road Wheel set

NOTE: During this process it is advisable to put together a short piece of track and to check the fit as outlined in **Step 10.**



Figure 9b

Figure 9c



Figure 9d

Panther Ausf G

Assembly Instructions

Running Gear

Step 10. Before finally securing the Road Wheels in place it is advisable at this point to assemble a short piece of track and lay it over the over the Wheels See Figures 10a and 10b) to make sure the alignment of the Running Gear is straight and true and that everything has been installed correctly. The inside of the teeth on the inside of the track should pass on the outside of the Idler Wheel (see Figure 10c).

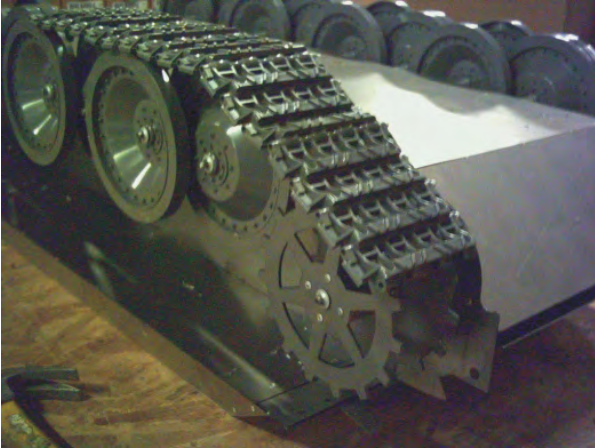


Figure 10a



Figure 10b



Figure 10c

Step 11. Secure all wheels in place with Push Nuts.

Step 12. Assemble Complete the Track assembly and install.



Figure 12a

Panther Ausf G

Assembly Instructions

Running Gear

Step 13. The tank with the Running Gear installed, at this point should look as it does in Figure 13a.



Figure 13a

Step 14. Locate the Drive Gear Hub and install to the Drive Sprocket as shown in Figure 14a. Install one on each side using Epoxy. This can be done now or at a later date.



(2) Drive Gear Hub
BRA003-406R



Figure 14a

Panther Ausf G

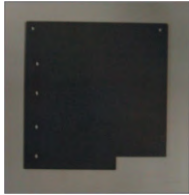
Assembly Instructions

Front Fender Assembly and Installation

Step 1. Locate the metal Fender pieces, left and right and the two (2) Fender Sides .



(1) Fender -
Left
BRA003-706M



(1) Fender -
Right
BRA003-707M



(1) Fender Sides -
Two (2) Pieces
BRA003-717M

Step 2. Bend the Fender fronts to a radius that matches the curve of the Fender Side pieces (see Figure 2a and 2b).

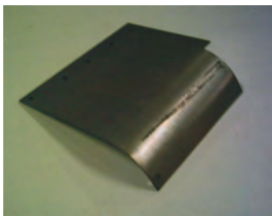


Figure 2a

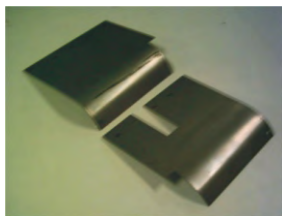


Figure 2b

Step 3. Bend the tabs on the Fender Side pieces up 90 degrees, bending one in the opposite or mirror image of the other (see Figures 3a, 3b and 3c)..



Figure 3a



Figure 3b



Figure 3c

Step 4. Place the Side pieces onto the Right and Left fenders and secure in place with Pop Rivets (see Figures 4a, 4b and 4c).



Figure 4a



Figure 4b



Figure 4c

Step 5. Instal the fenders by aligning the holes in the fender with the holes in the fronts of the hull/Upper Deck assembly (see Figures 5a, 5b and 5c). When complete they should appear as in Figure 5d.



Figure 5a



Figure 5b



Figure 5c



Figure 5d

Panther Ausf G

Assembly Instructions

Turret, Mantlet and Barrel Assembly

Step 1. To begin, locate the Turret piece, the Turret Bottom and the four (4) Turret Rotate Guides. The Turret (see Figure 1a) will come with the two side panels folded over.

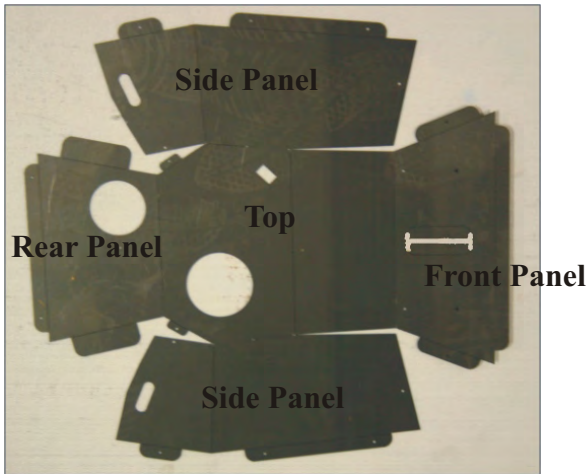


Figure 1a



Figure 1b



(4) Turret Rotate Guide
BRA003-441R

Figure 1c

Step 2. Fold the side tabs on the Rear Panel to approximately 70 degree. Fold all other Tabs up to 90 degrees (see Figure 2a)

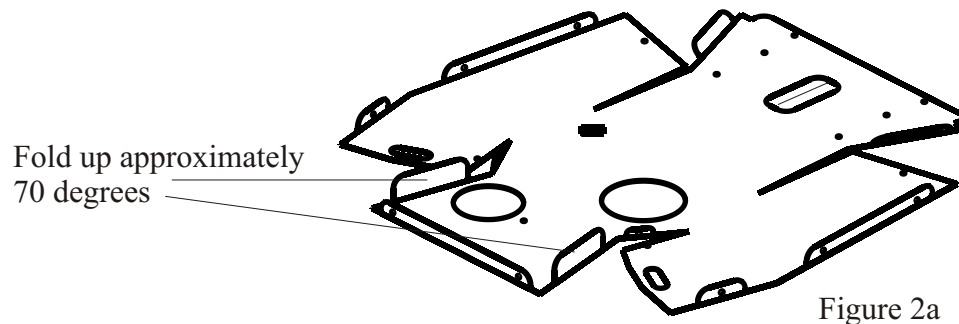


Figure 2a

Step 3. Begin to fold the Turret at all of the stitched and perforated lines.

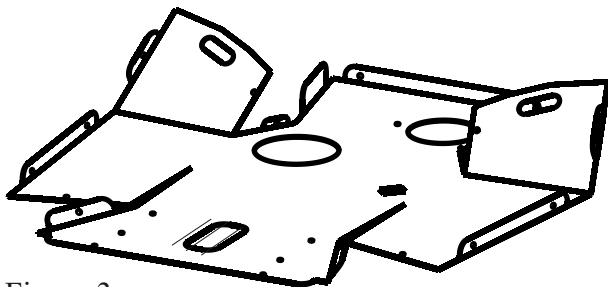


Figure 3a

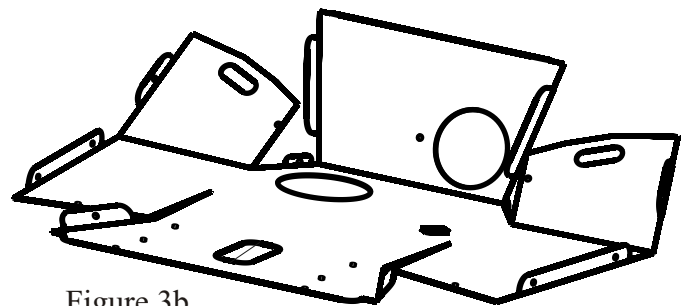


Figure 3b

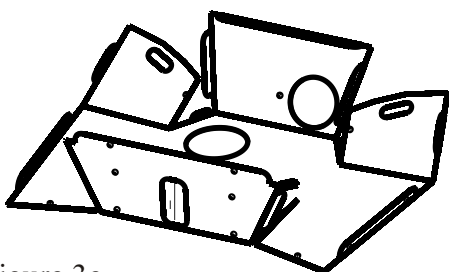


Figure 3c

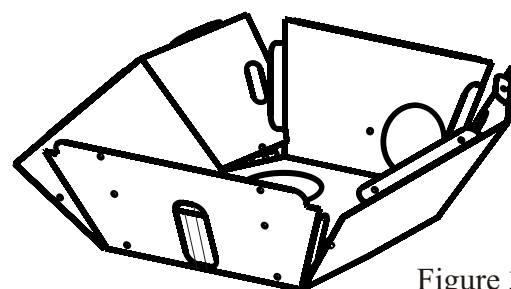


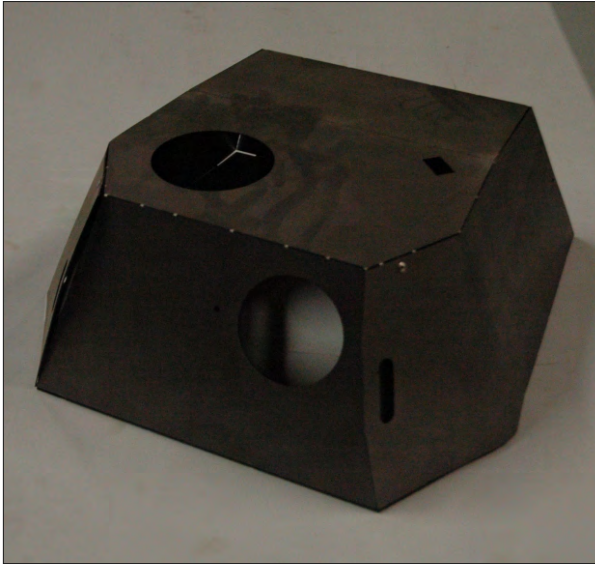
Figure 3d

Panther Ausf G

Assembly Instructions

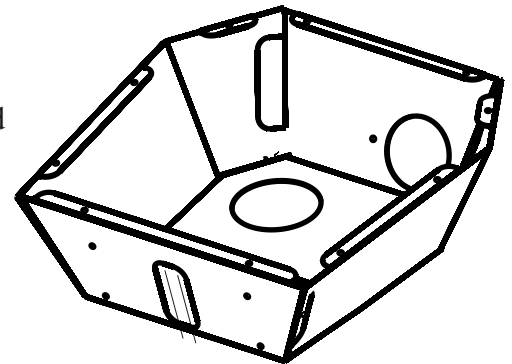
Turret, Mantlet and Barrel Assembly

Step 4. Align the holes in the front, rear and side panels and secure with Pop Rivets.



NOTE!

The back of turret panels
DO NOT line up with back
panel but extend just beyond



All sides and panels should
line up. Put a rivet in holes
to secure turret

Figure 4a

Step 5. The turret assembly to this stage should resemble Figure 5a.

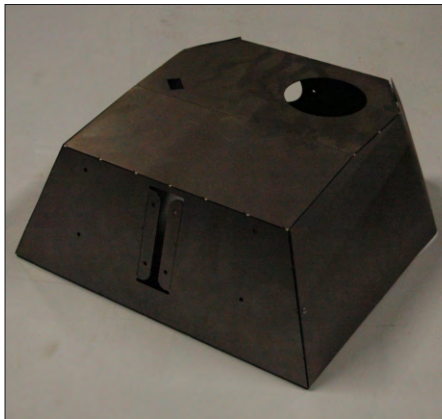


Figure 5a

Step 6. Place the Turret Bottom (See Figure 1a) on your work surface and locate the three (4) Turret Rotate Guides (See Figure 1b).



(1) Turret Bottom
BRA003-705M
Figure 1a

Note: There is not a top or a bottom to this piece until you commit to installing the Turret Rotate Guides. The side to which they are installed will automatically become the bottom.



(4) Turret Rotate Guide
BRA003-441R
Figure 1b

Panther Ausf G

Assembly Instructions

Turret, Mantlet and Barrel Assembly



Figure 7a

Step 7. Pre-drill Turret Rotate Guides using the dimples on the top of each piece as locators using nothing larger than an 1/8 " bit. Drill to a depth of approx. 5/16" and start one #6 x 1/2" sheet metal screws in each hole (see Figure 7a and 7b).



Figure 7b

Step 8. Slide the "started" screws of each of the Turret Rotate Guides into the slots on the Turret Bottom making sure that the inside curve of the Turret Rotate Guide is mimicking the arc of the hole in the Turret Bottom (See Figures 8a and 8b).

Note: Make sure the rabbit on the Turret Rotate Guide is to the bottom and to the outside.



Figure 8a

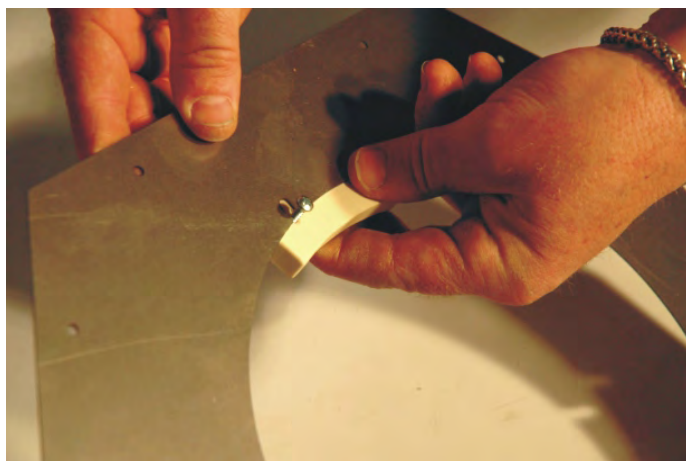


Figure 8b

Step 9. Before tightening down the screws for the individual Turret Rotate Guides and before attaching the Turret Bottom to the turret, place the assembly on the Upper Deck so that the Guides fit into the hole in the Upper Deck. The flange on the Turret Rotate Guide should sit on the top of the Upper deck for each individual piece with the curved vertical surface resting comfortably against the curve of the opening. Once the fit is achieved tighten down the screws (see Figure 9a).

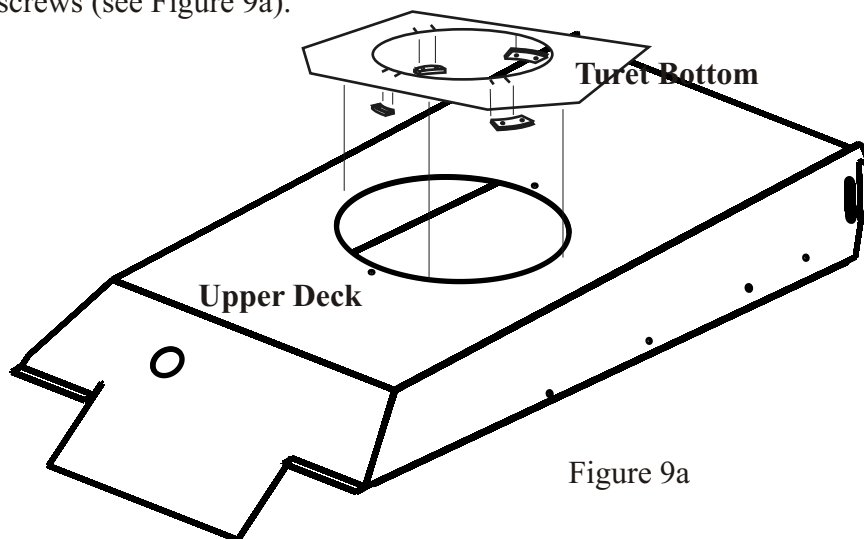


Figure 9a

Panther Ausf G

Assembly Instructions

Turret, Mantlet and Barrel Assembly

Step 10. When the Turret Rotate Guides are installed (see Figure 9a) and with the Guides toward the outside install the Turret Bottom to the Turret by aligning the holes in each piece and securing in place with Pop Rivets

Turret Rotating
Guides

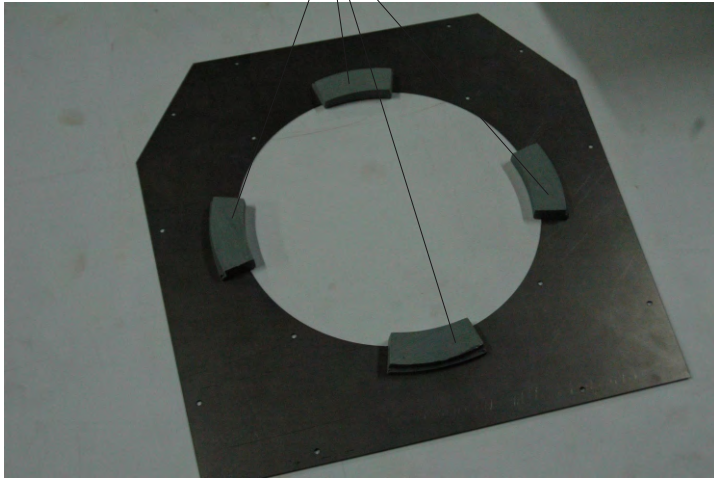


Figure 10a

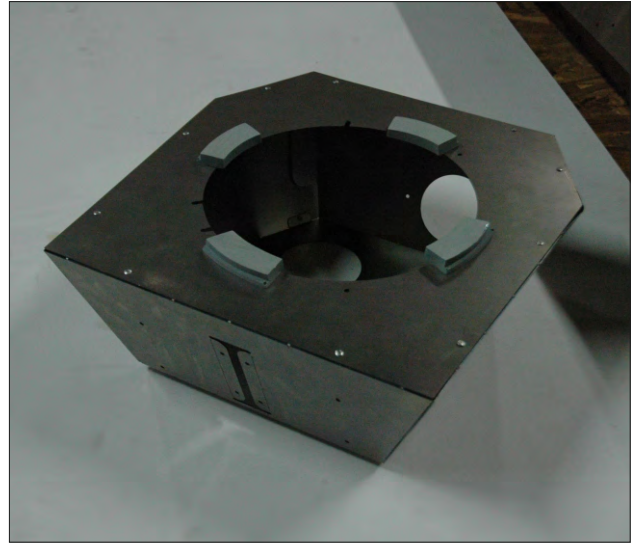


Figure 10b

Step 11. Locate the Turret Elevation Guide (see Figure 10a).

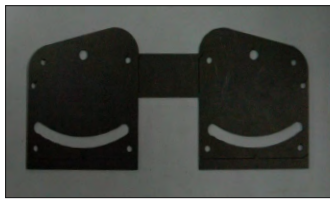


Figure 11a

(1) Barrel Elevation
Guide
BRA003-729M

NOTE: Some of the earlier iterations did not come with the Barrel Elevation Guide as shown here and in Steps 12, 13 and 14.

Step 12. Bend up each side with the curved slot to 90 degrees (see Figures 12a and 12b). Bend back the tabs on each of the sides to 90 degrees (see Figure 12c).

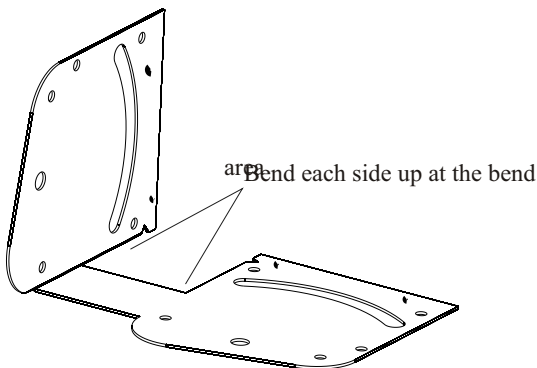


Figure 12a

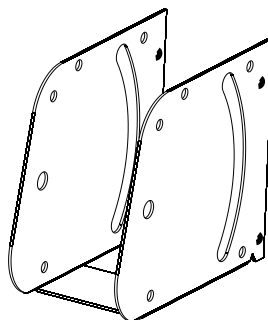


Figure 12b

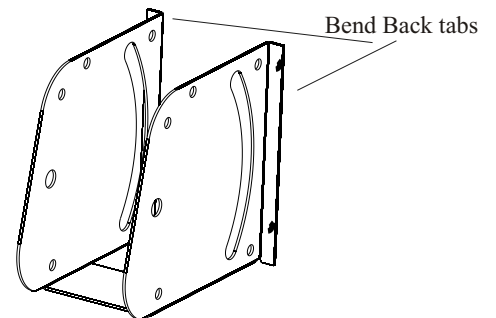


Figure 12c

Panther Ausf G

Assembly Instructions

Turret, Mantlet and Barrel Assembly

Step 13. Bend out the tabs on either side of the opening in the front of the Turret Assembly to 90 degrees (see Figure 13a). Fit the Barrel Elevation Guide piece into the slot from behind and secure in place using Pop Rivets (see Figure 13c).

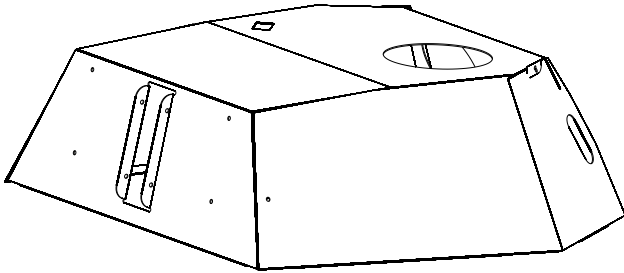


Figure 13a

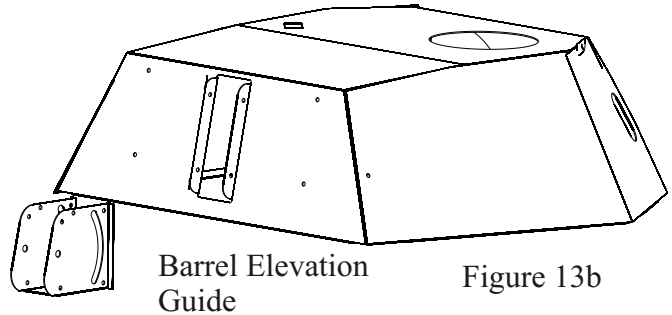


Figure 13b

Step 14. Pull the Barrel Elevation Guide into position and align the holes in the Elevation Guide Piece with those in the Turret and secure with Pop Rivets (see Figure 14c).

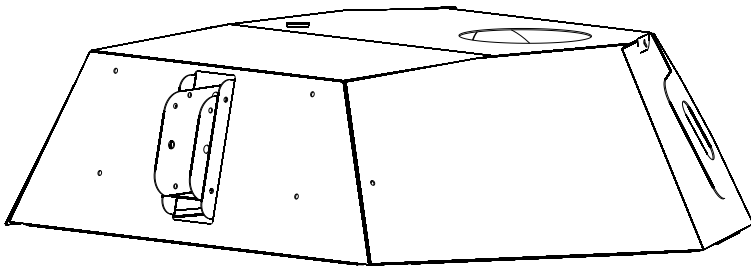
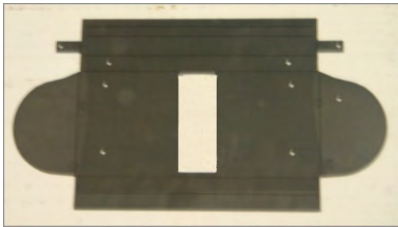


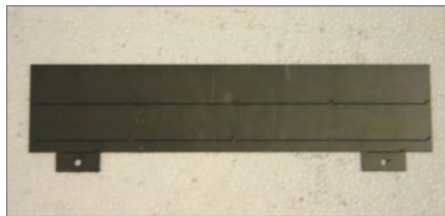
Figure 14a

NOTE: Some of the earlier iterations did not come with the Barrel Elevation Guide as shown here and in Steps 11, 12 and 13.

Step 15. Locate the Mantlet Back and the Mantlet Debris Plate.



(1) Mantlet Back
BRA003-725M



(1) Mantlet Debris Plate
BRA003-726M

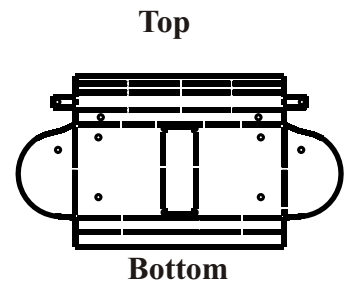


Figure 15a

Step 16. Bend rounded sides and tabs up 90 degrees (see Figure 16a). Fold the Top and Bottom panels up to meet the curved Sides shaping both the top and bottom panels along the “bend” lines to the shape of the curve and making sure that the tabs on the top panel go to the inside of each side (see Figure 16b). Secure the tabs to the sides with PopRivets.

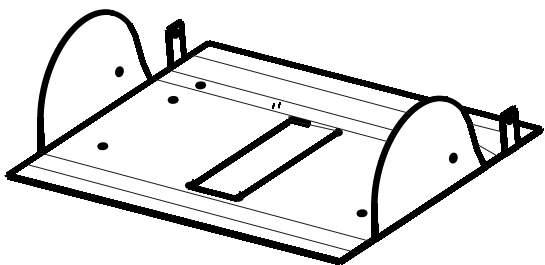


Figure 16a

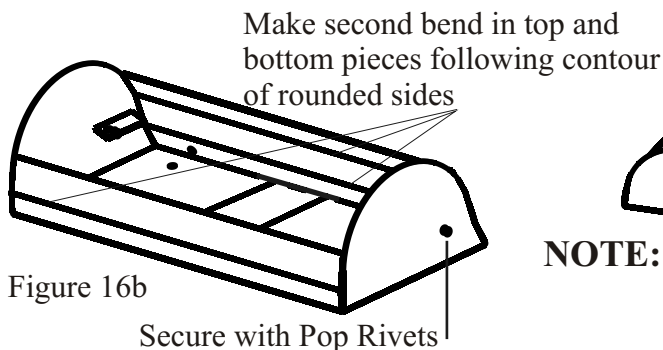
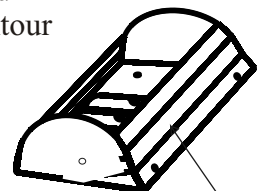


Figure 16b

Secure with Pop Rivets



NOTE: Second bend in top bends up slightly instead of down

Panther Ausf G

Assembly Instructions

Turret, Mantlet and Barrel Assembly

Step 17. Fit the Mantlet Back to the Turret and align the holes in the turret with the Holes in the Mantlet Back (see Figure 17a). Secure with Pop Rivets (see Figure 17b).

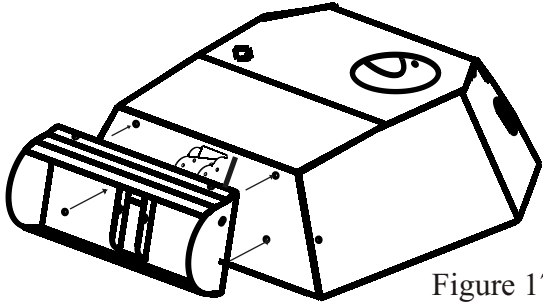


Figure 17a

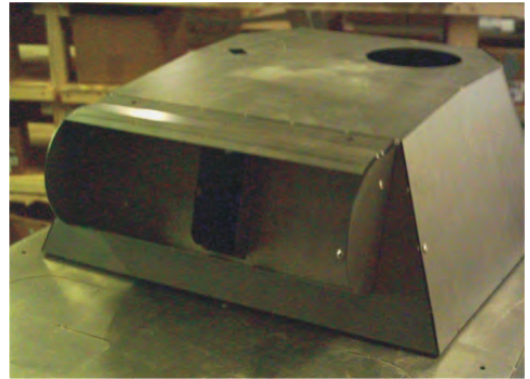


Figure 17b

Step 18. Bend the Mantlet Debris Plate at the first seam nearest the tabs to approximately 45 degrees and the tabs on the Mantlet Debris Plate back approximately 70 degrees (see Figure 18 a). Bend the Mantlet debris Plate down at approximately 45 degrees at the other seam (see Figure 18b).



Figure 18a



Figure 18b

Step 19. Position the Mantlet Debris Plate onto the Mantlet Back (see Figure 19a) and align the holes in the tabs on the Mantlet Debris Plate with the holes in the Mantlet Back and secure using Pop Rivets (see Figure 19b).

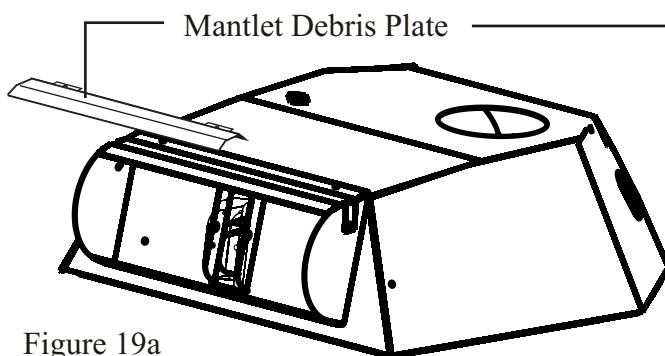


Figure 19a

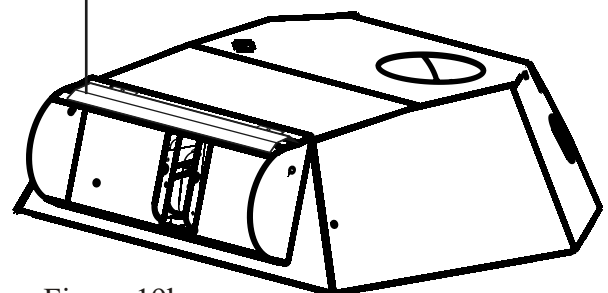


Figure 19b

Panther Ausf G

Assembly Instructions

Turret, Mantlet and Barrel Assembly

Step 20. Locate the Barrel Elevation Rotate Piece and the 1/4" x 2 1/2" Bolt and 1/4" Nut.



(1) Barrel Elevation
Rotate Piece
BRA003-456R



(1) 1/4" x 2 1/2" Bolt
and 1/4" Nut
BRA003-457R

Step 21. Hold the Barrel Elevation Rotate Piece into the opening in the Mantlet Back and insert the 1/4" bolt into the first hole in the Mantlet Housing (see Figure 21a). Put the PVC connector inline and push the dowel pin through the connector and through to the other side of the mantlet housing (see Figure 21b). Secure in place with the 1/4" nut and tighten to assure Barrel stability when the barrel assembly is installed.



Figure 21a



Figure 22b



Figure 22c

Step 22. Locate the Mantlet Back Sides, both left and right and install them onto the ends (sides) of the Mantlet Back as indicated below in Figure 22a. Position the piece so that the top just covers the pop rivet and curve of the part centers on the curve of the Mantlet Side (see Figure 22b).



(1) Mantlet Back
Side - Right
BRA003-443R

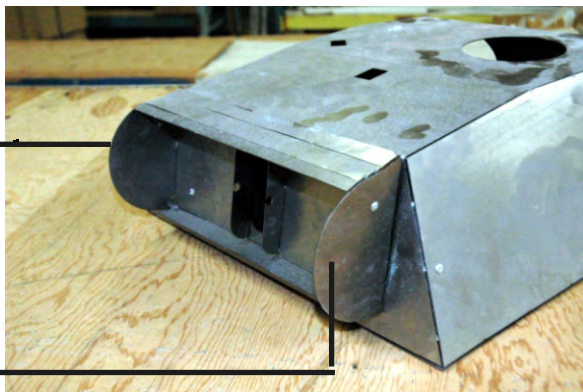
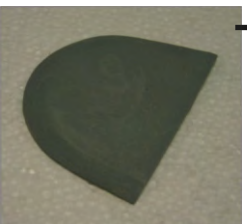


Figure 22a



(1) Mantlet Back
Side - Left
BRA003-442R

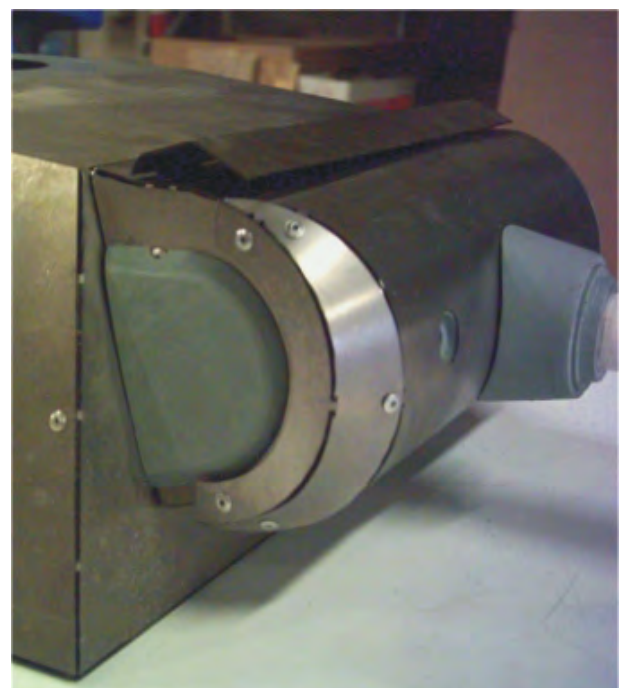


Figure 22b

Panther Ausf G

Assembly Instructions

Turret, Mantlet and Barrel Assembly

Step 24. Locate the Mantlet and the Mantlet Side Pieces.



(1) Mantlet
BRA003-724M



(2) Mantlet Side
BRA003-727M

Step 25. Bend the Backward “C” and the Small End Tabs down 90 degrees (see Figure 25a).

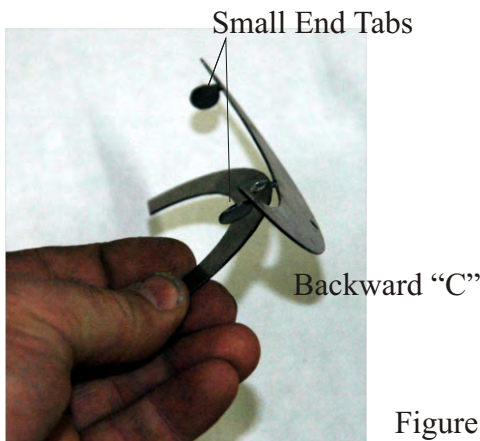


Figure 25a

Step 26. Next, bend and “curve” the half moon piece to match the “C”. The tabs on the half moon should line up with the holes on the C piece. (see Figure 26a). Secure with Pop Rivets.

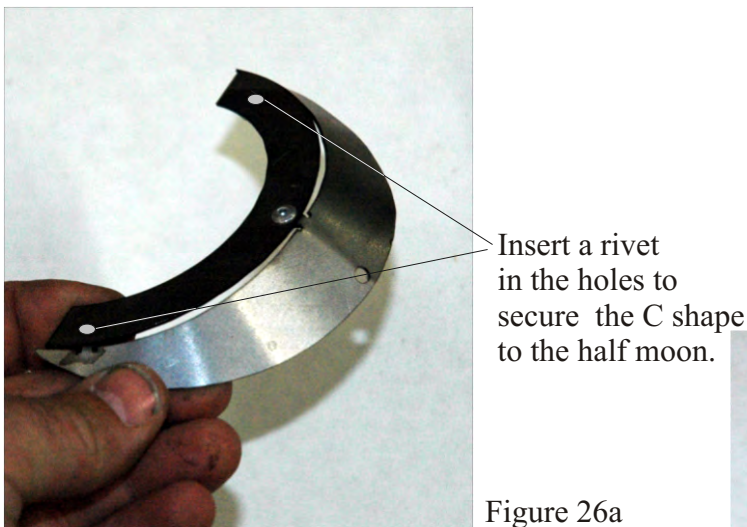


Figure 26a

Step 27. Secure the Small End Piece to round mantlet with a rivet in the top, middle and bottom of mantlet (see Figure 27a). Perform the same operation on the opposite side.

Figure 27a



Secure small end piece to round mantlet with a rivet in the top, middle and bottom of mantlet

Panther Ausf G

Assembly Instructions

Turret, Mantlet and Barrel Assembly

Step 28. Finished mantlet should look like the one in Figure 28a.



Figure 28a

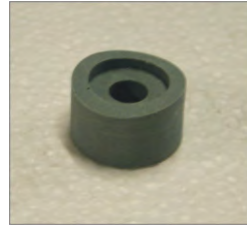
Step 29. Locate the Mantlet/Barrel Connector Piece, the Barrel/Mantlet Step Down and the Mantlet Machine Gun.



(1) Mantlet/Barrel
Connector Piece
BRA003-454R



(1) Barrel/Mantlet
Step Down
BRA003-455R



(1) Mantlet Machine
Gun
BRA003-429R

Step 30. The barrel outer and inner step down has a long and a short arc on the back sides (see Figure 30a). Rotate the inner and outer barrel step down pieces so that the long arcs match (see Figure 30b).

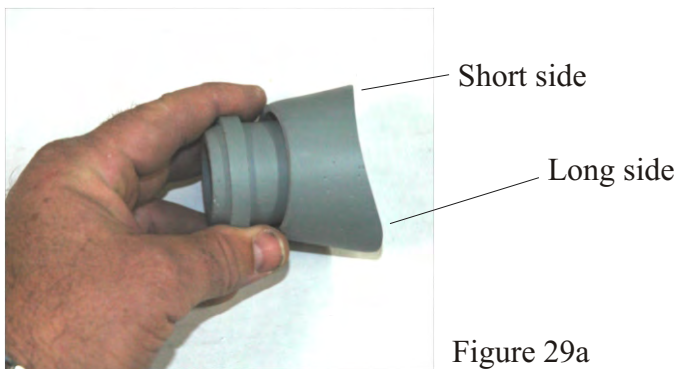


Figure 29a

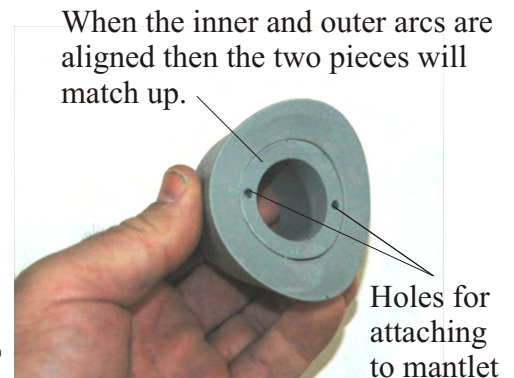


Figure 29b

Step 31. Turn Mantlet over and align Mantlet/Barrel Connector Piece with the holes in the mantlet (see Figure 30a) and secure. Secure the step down to the mantlet together with two (2) of the #6 x 1/2" screws provided (see Figure 31b).



Figure 31a

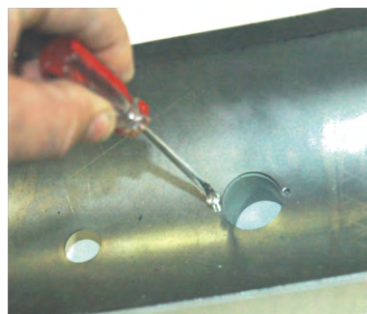


Figure 31b

Panther Ausf G

Assembly Instructions

Turret, Mantlet and Barrel Assembly

Step 32. See Figure 32a for the finished part with the step down attached.



Figure 32a

Finished part with the step down attached

Step 33. Super-glue the two (2) halves of the Muzzle Break together and then again using Super-glue secure the Muzzle Break into the end of the Barrel (See Figure 33a and 33ba) making sure that the openings in the Muzzle break are positioned horizontally.



(2) Muzzle Break
BRA003-448R



Figure 33a



Figure 33b

Step 34. Insert the barrel into the Mantlet Barrel Connector Piece/Barrel Mantlet Step Down in the Mantlet Assembly (see Figure 34a). The Barrel length between the end of the Barrel before the Muzzle Break and the Barrel Mantlet Step down should be 22 3/8". Secure in place with Super Glue making sure that the Muzzle Break is at 90 degrees to the horizontal portion of the Mantlet Assembly (see Figure 34b).



Figure 34a.



Figure 34b

Panther Ausf G

Assembly Instructions

Turret, Mantlet and Barrel Assembly

Step 35. Locate the Mantlet Machine Gun.



(1) Mantlet Machine
Gun
BRA003-429R

Step 36. Install the Mantlet Machine Gun behind the larger of the two (2) holes in the Mantlet and which is to the left of the Barrel Connector Piece/Barrel Mantlet Step Down (when facing the tank [see Figure 35a and 35b]). Assure the hole in the Resin Piece is centered in the hole in the Mantlet (see Figure 35c).

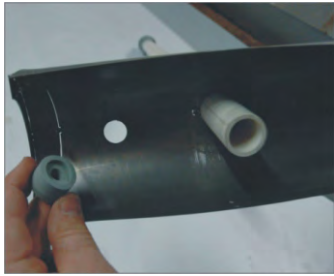


Figure 9c



Figure 9c



Figure 9c

Step 36. Install the Barrel Assembly into the barrel elevation Piece of the Turret (see Figure 36a).



Figure 36a

Panther Ausf G

Assembly Instructions

Turret, Mantlet and Barrel Assembly

Step 37. Locate the Right and Left Rear Turret Thickening Plates and install the Rear Turret Thickening Plates to the locations as shown in Figure 37a and 37b.



(1) Rear Turret Thickening Plate - Left
BRA003-458R



(1) Rear Turret Thickening Plate - Right
BRA003-459R

On the rear of the Turret, add the Thickening Plates to simulate that the metal is really this thick. Add putty to blend the metal resin part and remove seam.

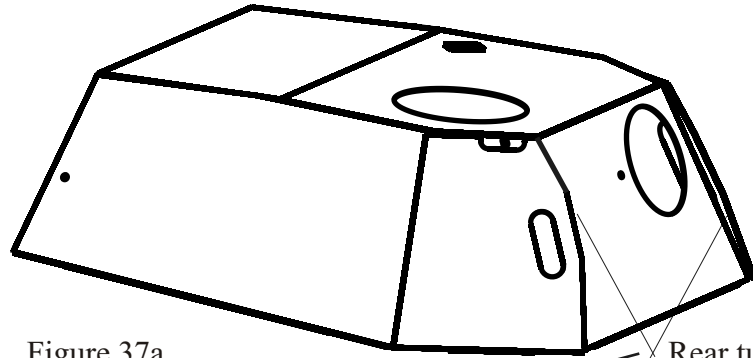


Figure 37a



Rear turret area to add resin thickener pieces

Figure 37b

Step 38. Locate the two (2) Mantlet Stops and install them to the location as shown in Figures 38a and 38b for the Right side and 38c and 38d for the Left. The Turret Stop sits just under the and against the end of the Mantlet Back.



(2) Mantlet Stop
BRA003-465R



Figure 38a



Figure 38b



Figure 38c



Figure 38d

Panther Ausf G

Assembly Instructions

Engine Intake Grill Installation

Step 1. Locate the four (4) Engine Intake Grills. Install the Engine Intake Grills into the four corners at the rear of the Upper Deck over the engine (see Figure 1a).



(4) Engine Intake Grill
BRA003-430R

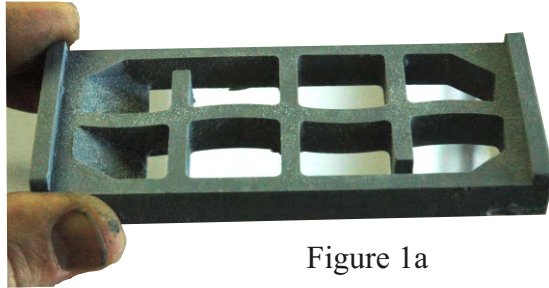


Figure 1a

Step 2. The (4) Engine Intake Grills are to be installed into Engine Cover portion of the Upper Deck (see Figure 2a).

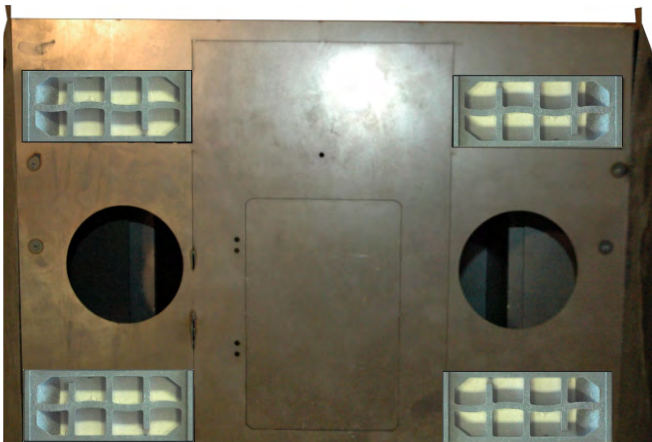


Figure 2a

Step 3. To achieve the installation at the notch bend the small tabs at the bottom of the larger tabs out to 90 degrees (see Figure 3a and 3b). Then bend the larger tab down into the opening in the Upper Deck to 90 degrees (see Figure 3b and 3c). Fit the Engine Intake Grills into the pockets (see Figure 3d) you have created at the four corners and secure with Epoxy (see Figure 3e). The grill when installed should look as it does in Figure 3f.

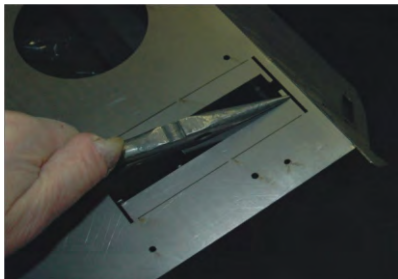


Figure 3a

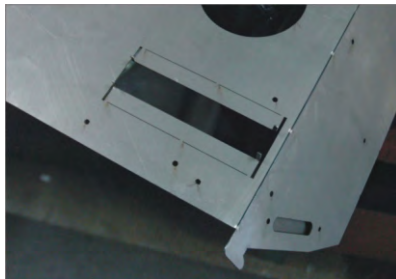


Figure 3b



Figure 3c

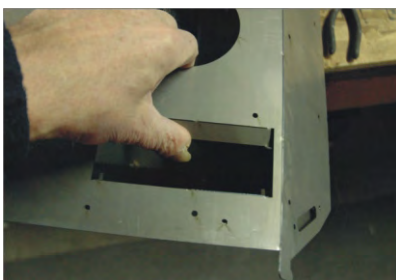


Figure 3d

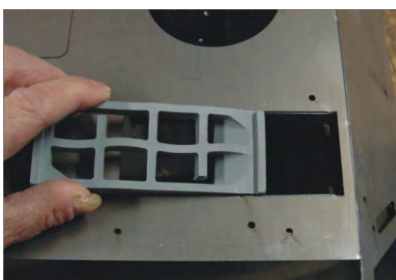


Figure 3e



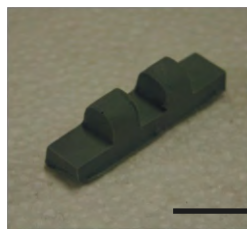
Figure 3f

Panther Ausf G

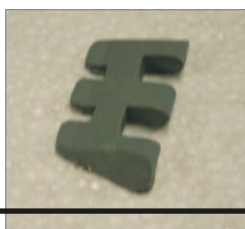
Assembly Instructions

Upper Deck Part Placement

NOTE: If you assemble the Hinge pieces before installing it into the Tank (recommended) make sure to space the Hinge Parts a metal thickness apart before drilling for the hinge pin. Use a length of 1/16" diam. Metal rod.



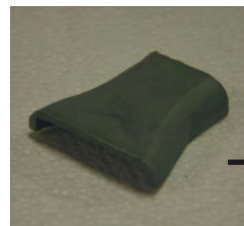
(2) Front Hatch
Hinge Base
BRA003-439R



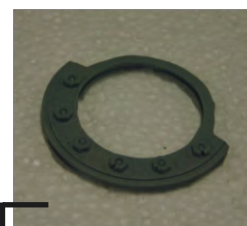
(2) Front Hatch
Hinge
BRA003-440R



(2) Hatch Hinge
Assembly



(1) Driver's Periscope
Cover
BRA003-449R



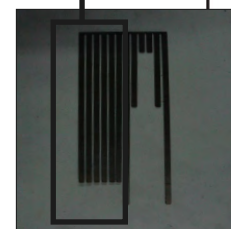
(1) Driver's Periscope
Cover Bolt Ring
BRA003-450R



(1) Travel Lock
Vent Cover
BRA003-418R



(1) Periscope Cover
BRA002-408R



(1) Fender and Storage
Bin Ribs - One (1) set
BRA003-745M

NOTE: Install the six
detail strips to the Right
and Left Fenders - three
(3) to each side,

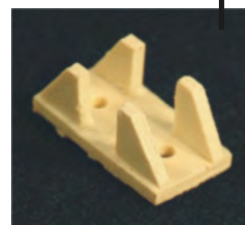


(1) Hull Machine
Gun
BRA001-439R

For the Assembly of the Hull Machine Gun
and the Hull Machine Gun Mount see
Page 60 - Front of Tank Details.



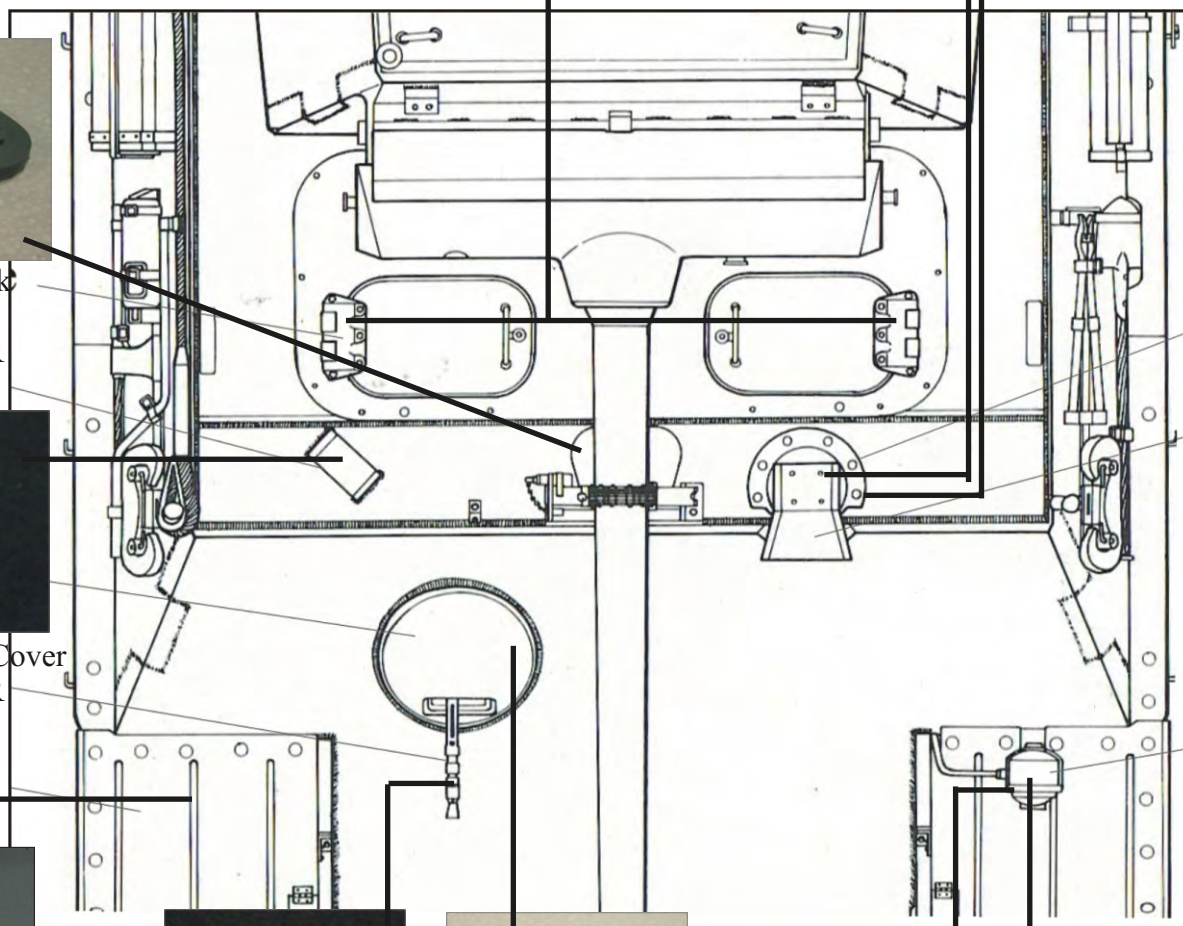
(1) Hull Machine
Gun Mount
BRA003-444R



(1) Headlight
Bracket
BRA001-637R



(1) Head Light
BRA001-636R



Panther Ausf G

Assembly Instructions

Upper Deck Part Placement - Rear - Antennae Mount, Engine Intake Grill, Raised Engine Grill, Engine Deck Vent, Raised Engine Vent Side Block, Engine Vent, Engine Deck Round Cover - Large, Engine Deck Round Cover - Small, Engine Hatch Hinge Base, Engine Hatch Hinge Arm, Rear Tow Cable Bracket and Engine Deck Round Cover - Flat



(2) Engine Hatch Hinge Base
BRA003-424R



(2) Engine Hatch Hinge Arm
BRA003-425R



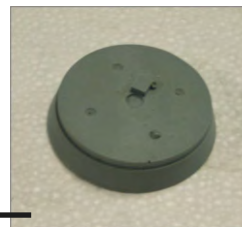
(2) Engine Hatch Hinge Assemblies



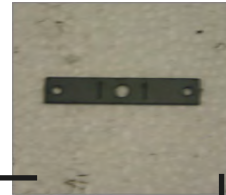
(1) Engine Deck Round Cover - Small
BRA003-422R



(1) Engine Deck Vent
BRA003-420R

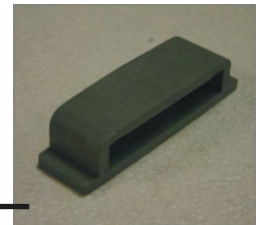


(1) Engine Deck Round Cover - Large
BRA003-421R

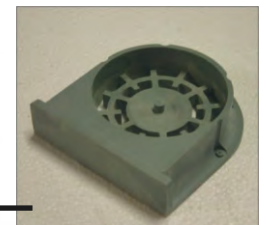


(2) Rear Tow Cable Bracket -
BRA003-743M

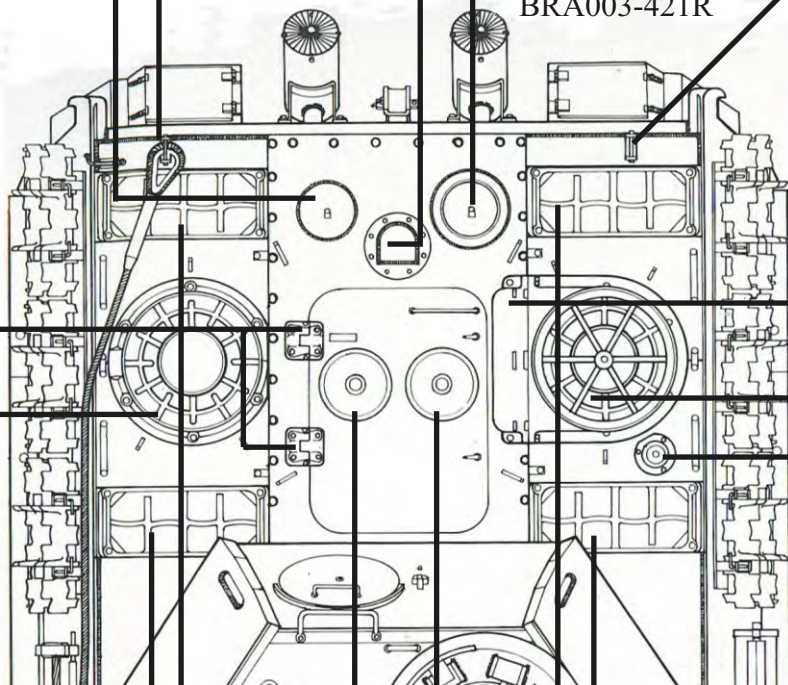
NOTE:
The Raised Engine Vent Side Block is positioned with the open side down and flat side against the flat side of the Raised Engine Grill



(1) Raised Engine Vent Side Block
BRA003-432R



(1) Raised Engine Grill
BRA003-431R



(1) Engine Vent
BRA003-433R



(2) Engine Intake Grill
BRA003-430R
See Page 26



(2) Engine Deck Round Cover -Flat
BRA003-423R



(2) Engine Intake Grill
BRA003-430R
See Page 26

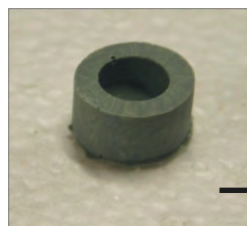


(1) Antennae Mount
BRA003-447R

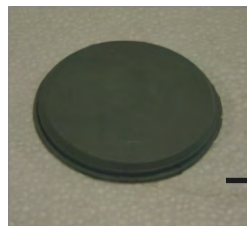
Panther Ausf G

Assembly Instructions

Turret Part Placement



(1) Tripod Mount
BRA003-462R

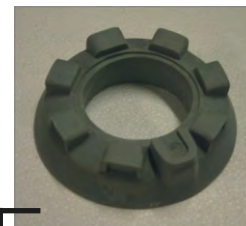


(1) Turret Loader
Hatch
BRA003-407R

NOTE: For the
loader hatch and
hinge assembly see
Page 48

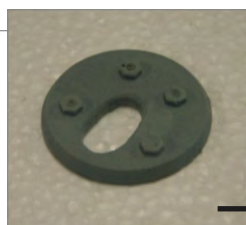


(1) Turret Loader
Hatch Rain Cover
BRA003-408R



(1) Cupola
BRA003-401R

NOTE; For the Cupola,
Cupola Hatch and Cupola
Pin Assembly see Page 47



(1) Close Defense
Port
BRA003-419R



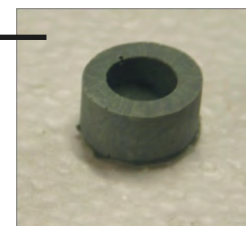
(1) Periscope Cover
BRA002-408R



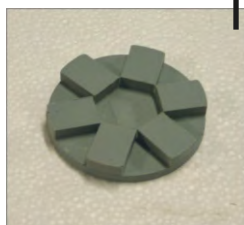
(1) Infrared Coupler
Cover
BRA003-438R



(3) Lifting Ring
BRA003-463R



(2) Tripod Mount
BRA003-462R

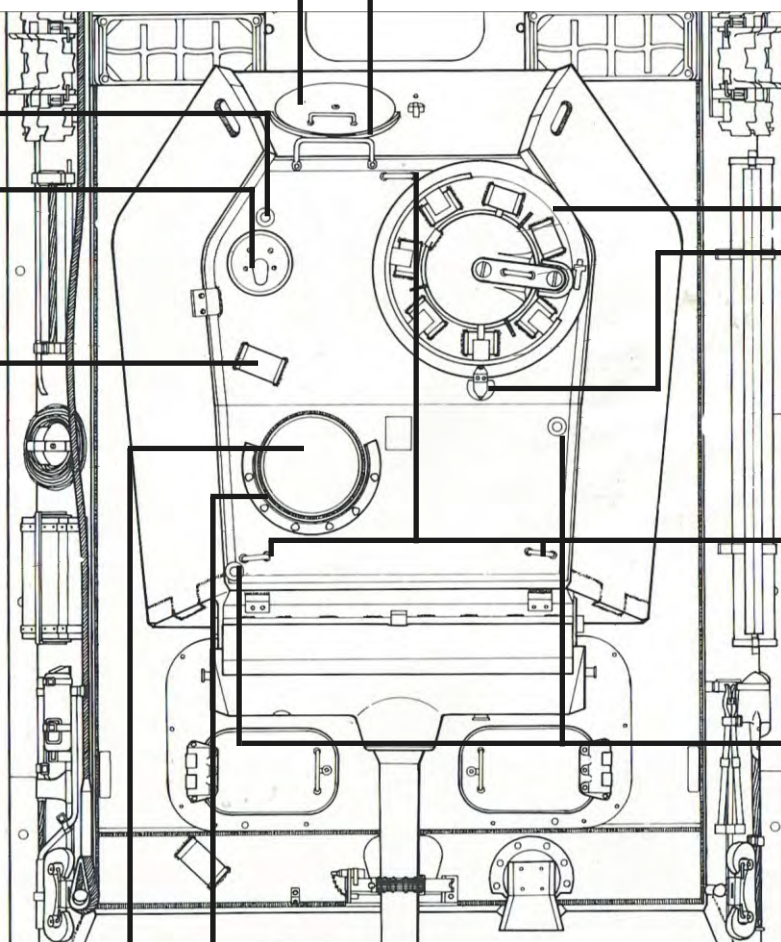


(1) Turret Vent
Cover
BRA003-412R

NOTE: This part
is installed with the
detail down



(1) Turret Vent Cover
Bullet Splash
BRA003-413R

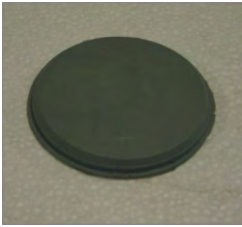


Panther Ausf G

Assembly Instructions

Loader's Hatch Assembly

Step 1. There are four parts need for this assembly, the Turret Loader's Hatch, the Turret Loader's Hatch Hinge Arm and the two (2) Loader's Hatch Brackets.



(1) Turret Loader's Hatch
BRA003-407R



(1) Turret Loader's Hatch Hinge Arm
BRA003-409R



(2) Turret Loader's Hatch Bracket
BRA003-744M

Step 2. Drill a hole in the end of each leg in the Turret Loader's Hatch Hinge Arm (see Figure 2a). The hole should be just large enough to accommodate the fastening device (not provided - here in the shop we are use a 1/8" x 1/2" bolt and nut). Bend the legs on the Turret Loaders's Hatch Bracket to 90 degrees (see Figure 2b). When the holes in each leg line up the base of the hinge should be at an angle. The angle will match the slope of the back of the Turret.



Figure 2a



Figure 2b

Step 3. After bending the Turret Loader's Hinge Brackets to the proper shape, attach one to one end of the Turret Loader's Hatch Hinge Arm (see Figure 3a and 3b) with the 1/8" x 1/2" Bolt and Nut. Insert the Hinge Arm with the bracket attached into the opening for the Loaders Hatch so that the slope on the base of the Bracket is in sync with the slope of the Turret and so that the Hinge Arm is horizontal. Align the hole in the Turret with the hole in the Bracket and secure a Pop Rivet (see Figure 3c and 3d).



Figure 3a



Figure 3b



Figure 3c



Figure 3d

Step 4. Hold the Turret Loaders Hatch (with the grooves toward the inside of the Turret see Figure 4a) against the hole in the Turret and swing the Hinge Arm up against the Door (see Figure 4b). Mark the position where Hinge Arm meets the door (see Figure 4c).



Figure 4a



Figure 4b



Figure 4c

Panther Ausf G

Assembly Instructions

Loader's Hatch Assembly

Step 5. Place the second Hinge Bracket on the spot you marked on the back of the Door and drill a pilot hole to take a screw (not provided)(see Figure 5a) to hold the Bracket in place that won't come through to the front of the door when installed. Secure the hinge Bracket in place with Epoxy and the screw (see Figure 5b).



Figure 5a



Figure 5b

Step 6. Using a second 1/8" x 1/2" Bolt and Nut (see Figure 6a) mount the Door and Hinge Bracket Assembly to the open end of the Hinge Arm and tighten the a snugness (see Figure 6b).



Figure 5c



Figure 5d

Step 7. When installation is complete the Assembly should operate as shown in Figures 7a and 7b.



Figure 7a

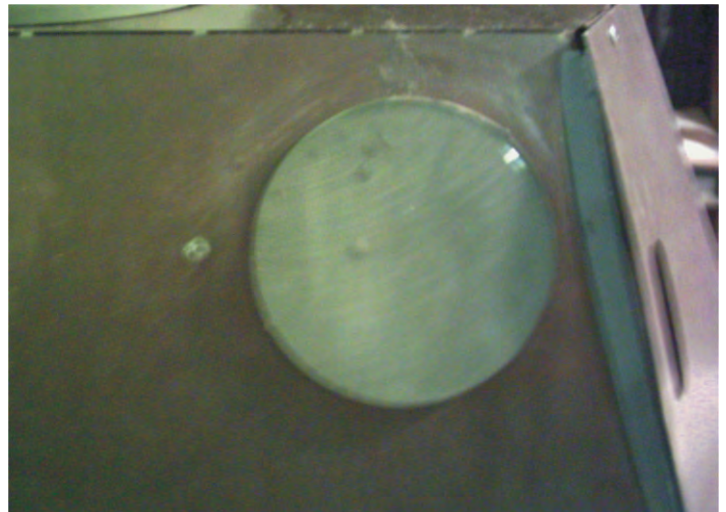


Figure 7b

Panther Ausf G

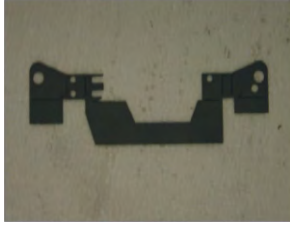
Assembly Instructions

Barrel Travel Lock Assembly

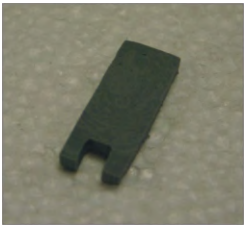
Step 1. Locate the Travel Lock Body, the Travel Lock Base, the Travel Lock Arm, the travel Lock Pin and the Travel Lock Seat and assemble them into a piece resembling Figure 1a following the steps below.



(1) Travel Lock Body
BRA003-734M



(1) Travel Lock Base
BRA003-733M



(1) Travel Lock Arm
BRA003-426R

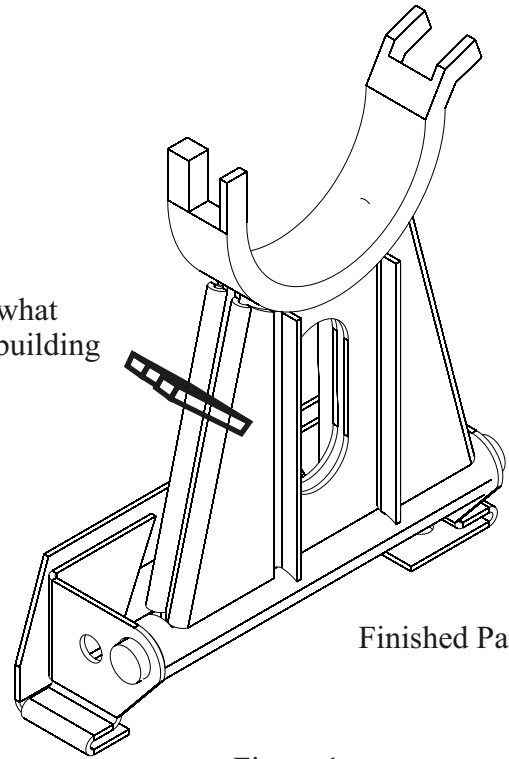


(1) Travel Lock Pin
BRA003-427R



(1) Travel Lock Seat
BRA003-428R

This is what
we are building



Finished Part

Figure 1a

Step 2. Bend the outside 1/4" tabs up 90 degrees (see Figure 2a). Turn the part over and bend the wings (see Figure 2b) all the way back (see Figure 2c).

Bend up the outside 1/4 inch tabs

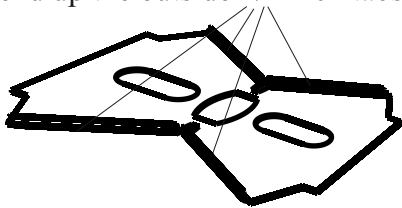


Figure 2a

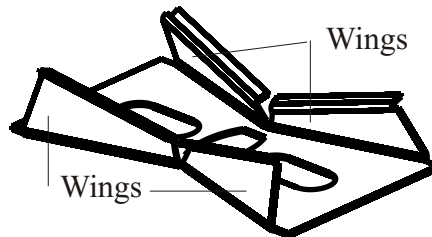


Figure 2b

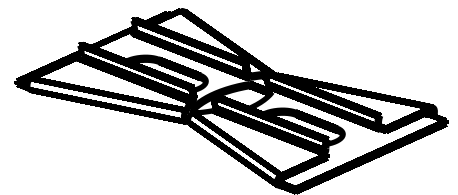


Figure 2c

Step 3. Fold the piece in half BACKWARDS (see Figure so that the folded tabs and wings remain on the outside). Press the sides together so that finished part looks like Figure 3b.

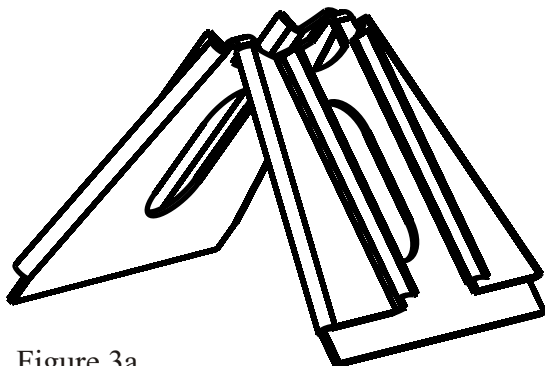


Figure 3a

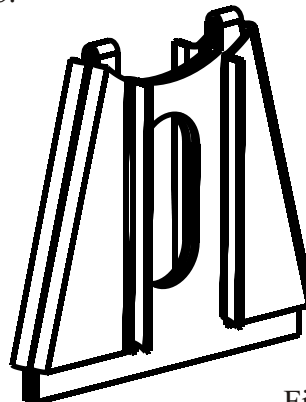


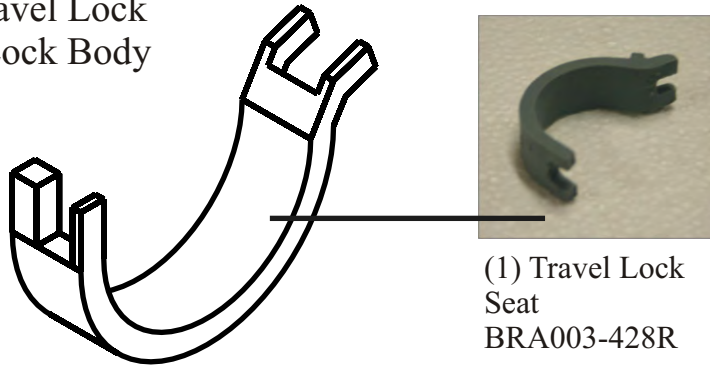
Figure 3b

Panther Ausf G

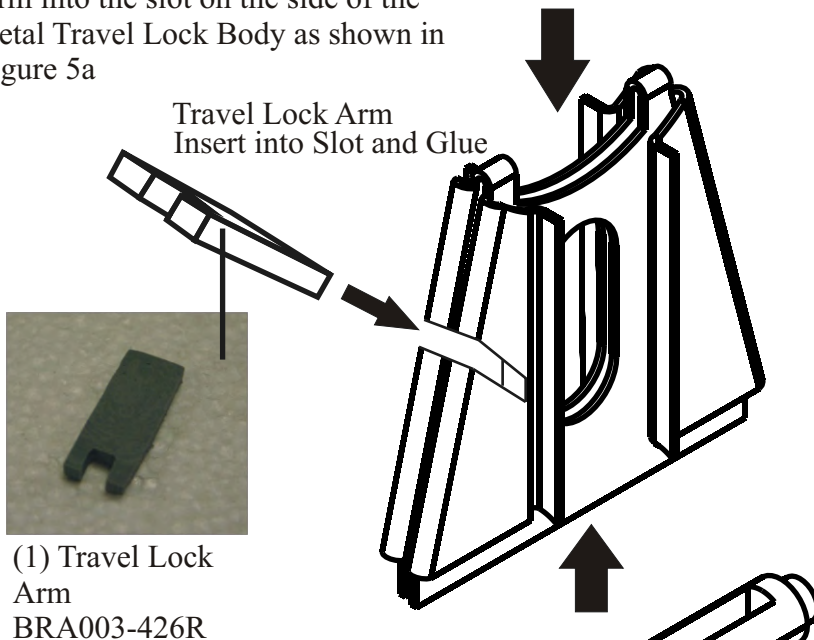
Assembly Instructions

Barrel Travel Lock Assembly

Step 4. Glue the resin Travel Lock Seat to the metal Travel Lock Body as shown in Figure 4a



Step 5. Insert the resin Travel Lock Arm into the slot on the side of the metal Travel Lock Body as shown in Figure 5a



Step 6. Glue the resin Travel Lock Pin to the metal Travel Lock Body as shown in Figure 6a.



Panther Ausf G

Assembly Instructions

Barrel Travel Lock Assembly

Step 7. Locate the Travel Lock Base.



(1) Travel Lock
Base
BRA003-733M

Step 8. Fold the Travel Lock Base along the seams in the sequence as shown blow to create the piece shown in Figure 8



Figure 8a



Figure 8b



Figure 8c



Figure 8d



Figure 8e

Panther Ausf G

Assembly Instructions

Barrel Travel Lock Assembly

Step 9. The next thing to do before completing the assembly is to mount the Travel Lock Base onto the tank (see Figures 9a, 9b and 9c).



Figure 9a



Figure 9b



Figure 9c

Step 10. Locate the Travel Lock Vent Cover and install it into the opening in the Travel Lock Base so that the vertical surface of the “rabbit” fits tight against the inner vertical surface of the Travel Lock Base (see Figure 10a).



(1) Travel Lock
Vent Cover
BRA003-418R

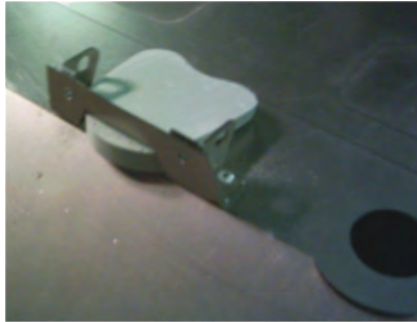


Figure 10a

Step 11. Complete the Travel Lock Assembly by inserting the dowel ends of the Travel Lock Pin into the large holes in the ends of the Travel Lock Base (see Figure 11a). You will have to bend the sides outward slightly to accomplish this. Push the side back into position and secure the sides to the front of the Travel Lock Base with Pop Rivets (see Figure 11b). The Travel Lock Assembly should move freely up and down.

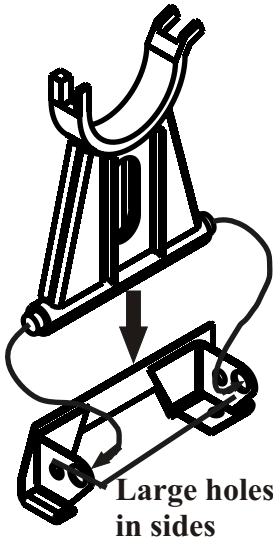


Figure 11a

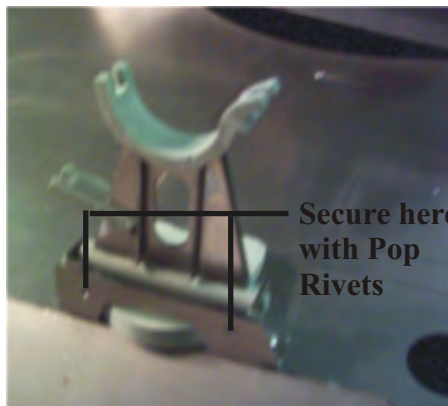
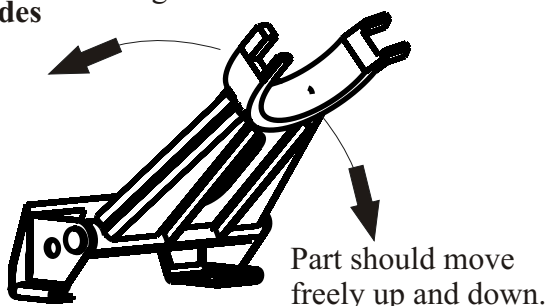


Figure 11b



Step 12. When complete the installation should look as it does in Figure 12a..



Figure 12a

Panther Ausf G

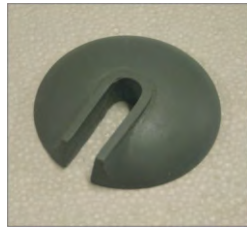
Assembly Instructions

Cupola

Step 1. Locate the Cupola, the Cupola Hatch, the Cupola Hatch Pin and the Cupola Machine Gun Rail.



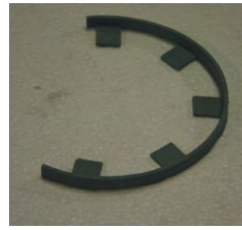
(1) Cupola
BRA003-401R



(1) Cupola Hatch
BRA003-402R



(1) Cupola Hatch
Pin
BRA003-403R



(1) Cupola Machine
Gun Rail
BRA003-404R

Step 2. Drill a 3/8" hole in the Cupola to accommodate the Cupola Hatch Pin (see Figure 2a).



Figure 2a

Step 3. Set the Cupola Hatch onto the seat in the Cupola (see Figure 3a) and align the slot horizontally with the hole for the Cupola Hatch Pin. Set the Cupola Hatch Pin into the hole and fit the Arm of the Pin (see Figure 3b) into the slot of the Cupola Hatch (some fitting and shaping and sanding will be required to produce the desired result. Secure with Super Glue (see Figure 3c).



Figure 3a



Figure 3b



Figure 3c

Step 4. Slid the Cupola Hatch Pin into the hole in the Cupola and make sure the Cupola Hatch is centered and fits into the groove in the Cupola. When it is completed it should appear as it does in Figure 4b.



Figure 4a



Figure 4b

Panther Ausf G

Assembly Instructions

Cupola

Step 5. Fit the Cupola Machine Gun Rail to the Cupola so that one end attachment plate and one end of the rail is mounted on top of a view port on the left (see Figure 5a) next to the Cupola Hatch Pin (this piece will only fit one way). Secure with Super Glue (see Figure 5b).



Figure 5a



Figure 5b

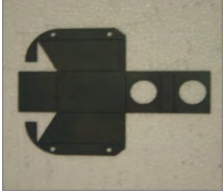
Panther Ausf G

Assembly Instructions

Back of Tank Details

Muffler Covers

Step 1. Locate the two (2) Muffler Covers.



(2) Muffler Cover
BRA003-715M

Step 2. Fold up the Sides to 90 degrees (see Figure 2a).

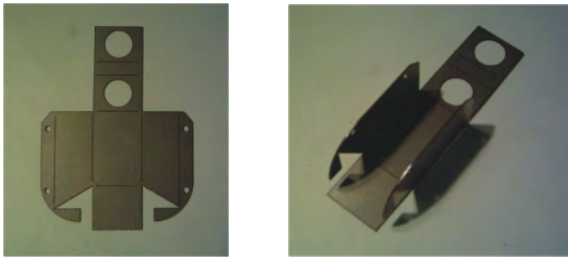


Figure 2a

Step 3. Fold the Back at the top seam between the two (2) large holes up to 90 degrees (see Figure 3a). Fold the Back at the bottom seam between the two (2) large holes up to 90 degrees (see Figure 3b). Bend the Front up to match the slope of the fronts of the sides (see Figure 3c). Bend the Back up 90 degrees to be flush with the ends of the sides (see Figure 3d).



Figure 3a



Figure 3b



Figure 3c



Figure 3d

Step 4. Bend the Flanges on each side outward to 90 degrees (see Figures 4a and 4b)



Figure 4a



Figure 4b

Step 5. Mount the Muffler covers onto the rear of the tank as shown in Figure 5a.

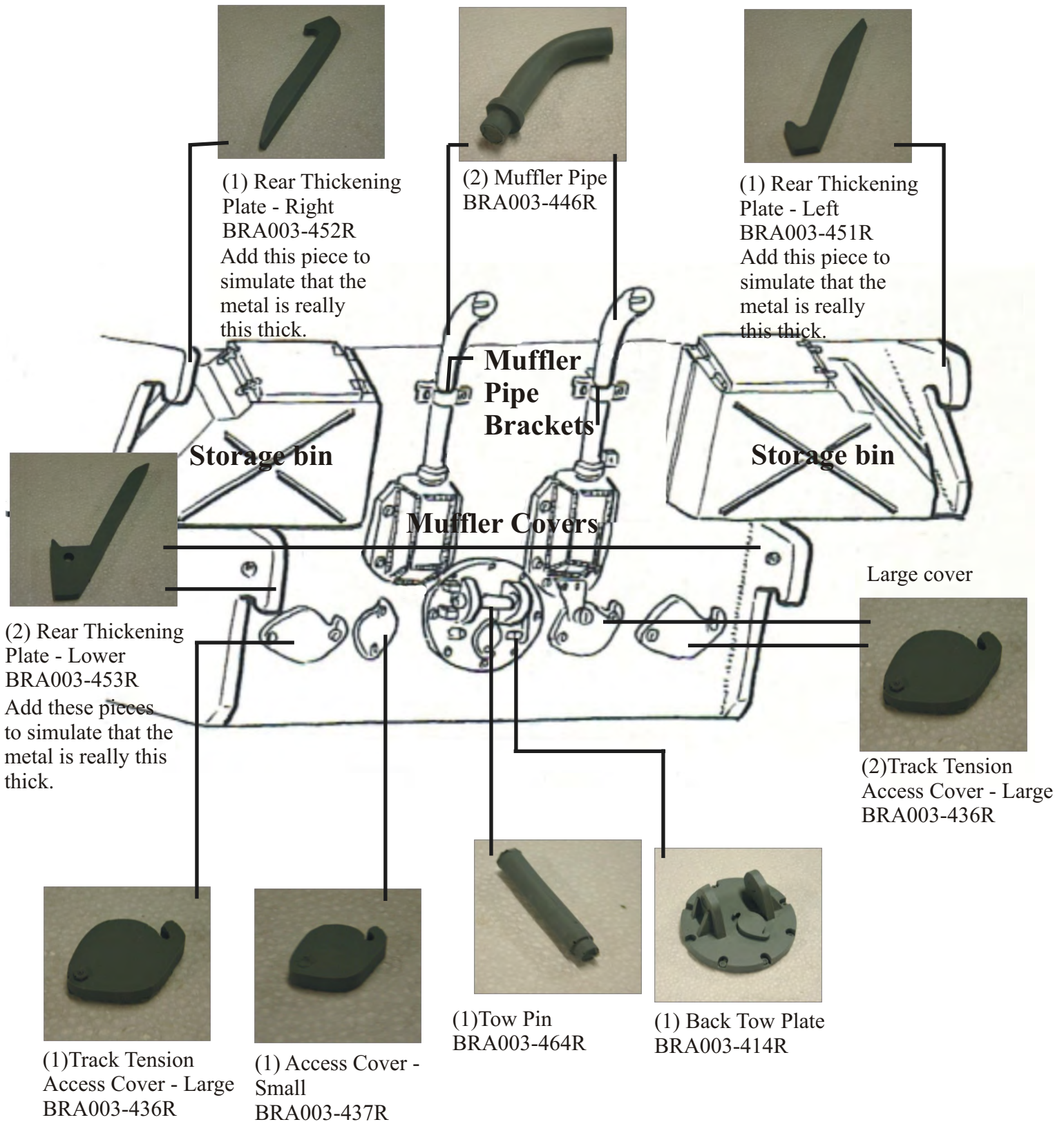


Figure 5a

Panther Ausf G

Assembly Instructions

Back of Tank Details



Panther Ausf G

Assembly Instructions

Back of Tank Details



(1) Tow Shackle
BRA003-410R



(1) Tow Shackle Pin
BRA003-411R

NOTE:

Tow Hook Pin handle
is not provided - here
in the shop we use a
piece of 1/8" dowel.



(1) Tow Shackle Pin
BRA003-411R



(1) Tow Shackle
BRA003-410R

Panther Ausf G

Assembly Instructions

Front of Tank Details

NOTE: Drill a 1/4" hole in the Machine Gun Mount at an angle that will allow the Machine Gun to be horizontal (parallel to the ground). Clean up the Hull Machine Gun and install it into the hole. Secure with Super Glue.

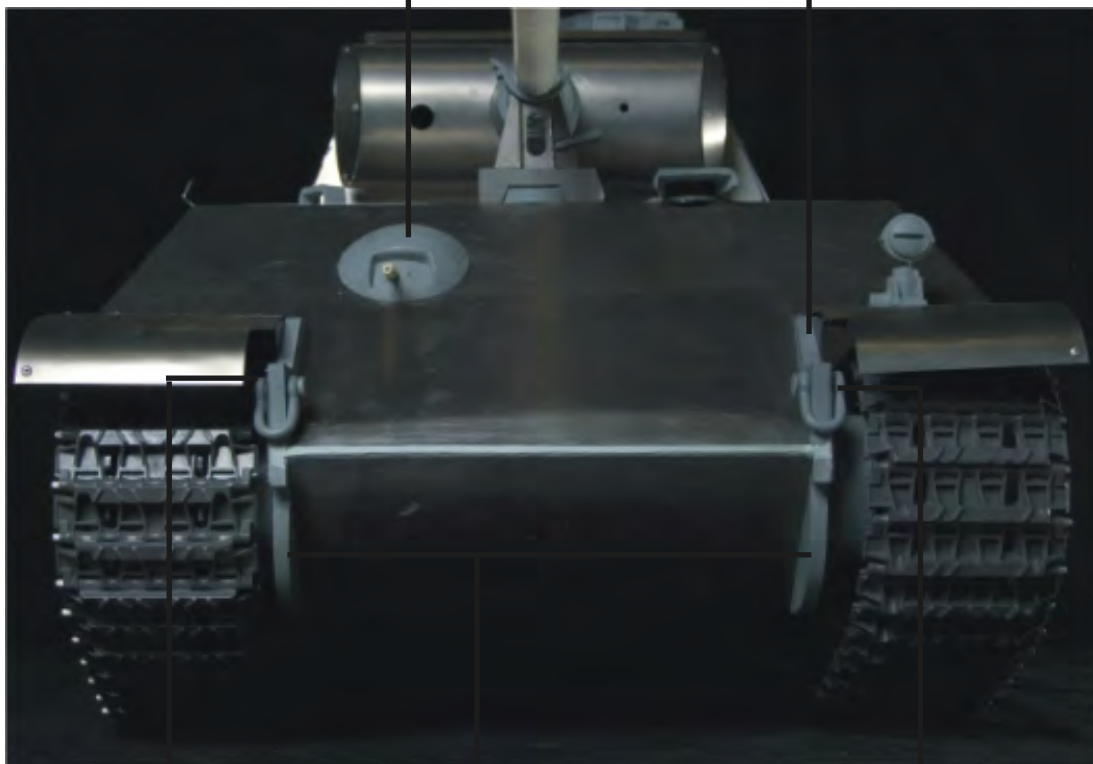


Hull Machine Gun and
Hull Machine Gun
Mount Assembly



(2) Front
Thickening
Plate - Upper
BRA003-461R

NOTE; Add these pieces to simulate that the metal is really this thick.



(1) Tow Shackle
BRA003-410R



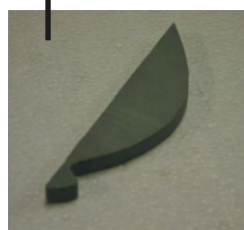
(1) Tow Shackle
Pin
BRA003-411R



(1) Tow Shackle
Pin
BRA003-411R



(1) Tow Shackle
BRA003-410R



(2) Front Thickening
Plate Lower
BRA003-460R

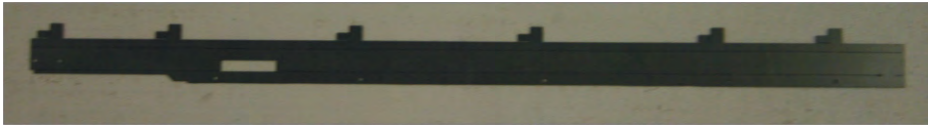
NOTE; Add these pieces to simulate that the metal is really this thick.

Panther Ausf G

Assembly Instructions

Side Shield Hangers and Panels

Step 1. Locate the Left and Right Side Shield Rails remembering that Left is selected while facing forward as if you were sitting in the tank.



(1) Side Shield
Rail - Left
BRA003-712M



(1) Side Shield
Rail - Right
BRA003-713M

Step 2. Bend the Side Shield Rail to a slight angle, approximately 15 degrees, along the seam that will end up the closest to the Upper Deck where it will be applied (see Figure 2a). Align the holes in the Side Shield Rail with the ones in the Upper Deck that have been provided and secure the Side Shield Rail in place using Pop Rivets (see Figures 2b and 2c)..



Figure 2a



Figure 2b



Figure 2c

Step 3. Bend the rail edge down at the outer seam to 90 degrees (see Figure 3a). Then bend the rail down so that the top surface of the rail is parallel to the ground (see Figure 3b)



Figure 3a



Figure 3b

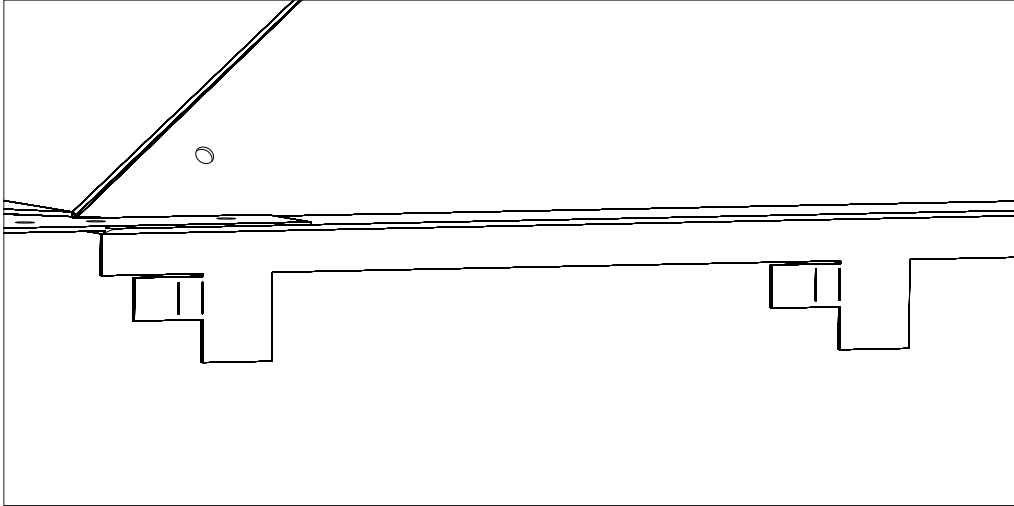
NOTE: The Side Shield Rails shown in these photographs are of an earlier model and did not include the Side Shield Clips as an integral part of the Side Shield rail as shown in Step 1. For more information on the installation of the Clips go to the end of this section.

Panther Ausf G

Assembly Instructions

Side Shield Hangers and Panels

Step 4. The Clips for hanging the Side Shields from are an integral part of the Side Shield Rail and before bending to accommodate the Side Shields look as they do in Step 1 and in Figure 4a below. They need to bent in the following manner to accommodate the Side Shields. Bend the Clip outward to 90 degrees (see Figure 4b) and then bend it back at the second seam another 90 degrees creating a “U” shape (see Figure 4c).



NOTE: The Side Shield Rails shown in the photographs in Steps 2 and 3 are of an earlier model which did not include the Side Shield Clips as an integral part of the Side Shield Rail as shown in these illustrations.

For more information on the Clips needed to accommodate the Side Shield Panels on the earlier models see Steps 8, and 9.

Figure 4a

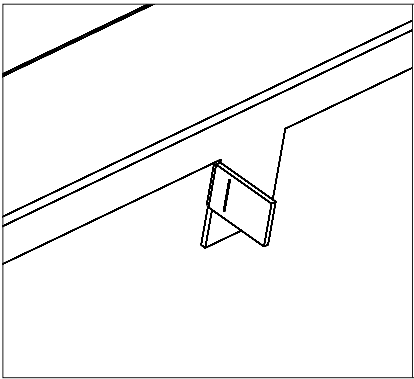


Figure 4b

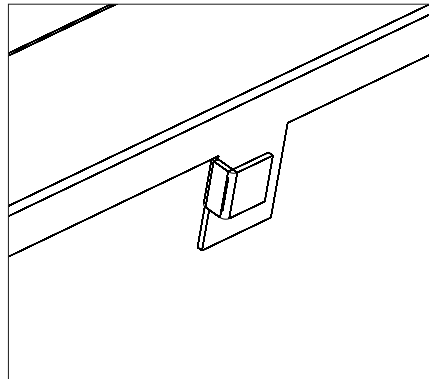


Figure 4c

Step 5. Locate the Side Shield Panels as you are now ready to install them.



(2) Side Shield
Type A
BRA003-708M



(2) Side Shield
Type B
BRA003-709M



(6) Side Shield
Type C
BRA003-710M

NOTE: The curfs on the openings of Shields Type and Type B are the only thing that differentiates the two from one another as that differentiation causes one typ to be the Front Panel and one to be the Rear Panel. And they are exactly the opposite in placement from one side to the other. In other words the Type A Panel goes in the Front on one side and on the Rear on the other.

Panther Ausf G

Assembly Instructions

Side Shield Hangers and Panels

Step 6. Install the side Shields beginning at the rear (see Figure 6a). Align the holes in the Side Shields with the Clip beginning with a Type A Panel on the Left side (a Type B panel on the Right side). Slide the Panel onto the clip and shift it Forward (on the Left side of the tank) or backward (on the Right side of the tank) until the curf drops over the arm of the Clip See Figure 6b).



Figure 6a



Figure 6b

Step 7. Continue the process with three (3) Type C panels (see Figure 7a). Complete the Side Shield installation by installing a Type B panel on the Left side (Type A panel on the Right side) (see Figure 7b).



Figure 7a

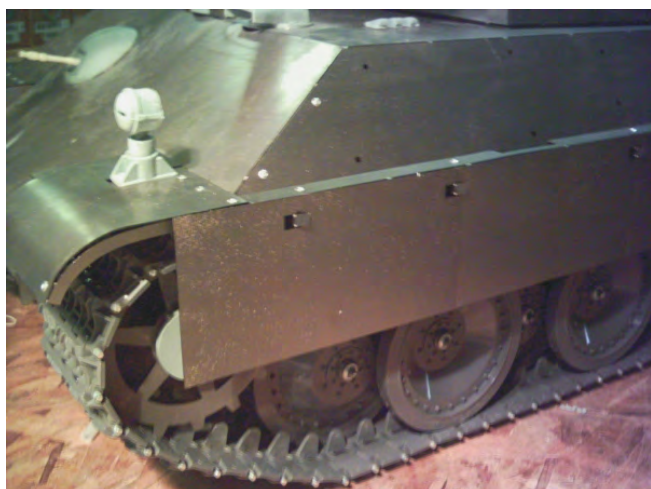


Figure 7b

Step 8. This step is to assist in the application of the Side Shield Rail Clips. **NOTE:** Steps 8, 9 and 10 can be skipped if your tank is a later model in which the clips are an integral part of the Side Shield Rail.



Side Shield Clips
(for early models only)
There is no part number
for this item.

Panther Ausf G

Assembly Instructions

Side Shield Hangers and Panels

Step 9. Bend the Side Shield Clips (see Figure 9a) into the configuration as shown in Figures 9b, 9c, 9d and 9e. Bend the right side arm in to 90 degrees (see Figure 9b). Bend the top piece of that arm with the hole in it back inward to 90 degrees (see Figure 9c). Bend the left side arm back in the opposite direction to the right side arm at the first seam to 90 degrees (see Figure 9d) and then at the second seam continue to bend it another 90 degrees (see Figure 9d). **NOTE:** There are six clips for each side and the Left Side Clips should be bent to a mirror image of the Right Side Clips.

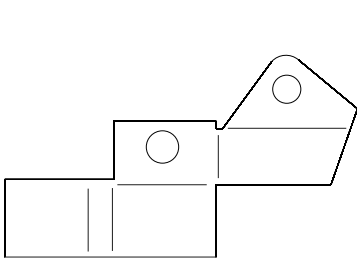


Figure 5a

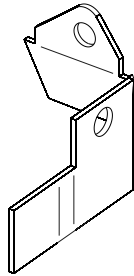


Figure 5a

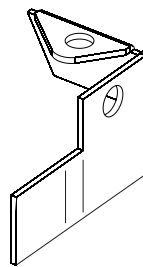


Figure 5b

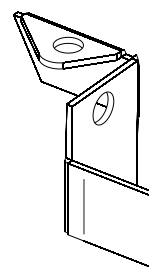


Figure 5c

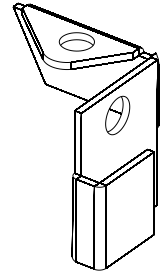


Figure 5d

Step 10. Install the Clip into the Side Shield Rail by install them into the channel from the underside, aligning the hole in the top and sides and securing in place with Pop Rivets (see Figures 10a and 10b).



Figure 10a



Figure 10b

Step 11. For the side panel installation see Steps 5, 6 and 7.

Panther Ausf G

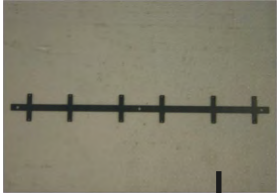
Assembly Instructions

Tank Details - Right Side

NOTE: Only the Brackets and Resin Parts pictured here are provided with this kit. None of the Tow Cables, Tow Cable Connectors, Ropes or Tools are provided.



Note: Fold the fins on the extra Track Bracket into the Configuration shown to the left.



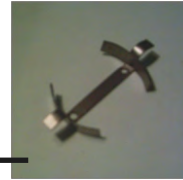
(1) Extra Track Bracket
BRA003-741M



(168) Track Link
BRA001-902P

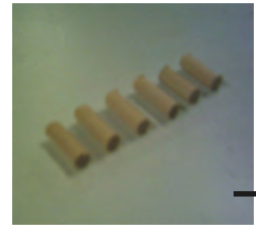
Note: Place six tracks on the Track Bracket on each side of the tank

Note: Fold the Track Cable Bracket into the Configuration as shown below.



(1) Track Cable Bracket
BRA003-736M

Note: Mount two (2) of the Dowels into the holes in the Axe Bracket.



(6) 1/4" x 1/2" long
Wooden Dowel
BRA003-805P



(1) Fire
Extinguisher
BRA003-405R



(1) Right Pry Bar
Bracket
BRA003-738M



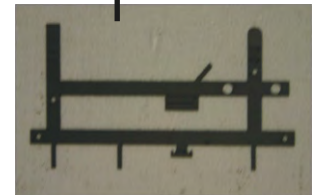
(1) Left Pry Bar
Bracket
BRA003-737M



(1) Jack Block
Bracket
BRA003-735M



(1) Jack Block
BRA003-445R



(1) Axe Bracket
BRA003-739M

Note: Fold the Right Pry Bar Bracket into the Configuration as shown above.



Note: Fold the Left Pry Bar Bracket into the Configuration as shown above.



Note: Fold the Jack Block Bracket into the Configuration shown above and install the Jack Block. Secure the metal band with Epoxy.



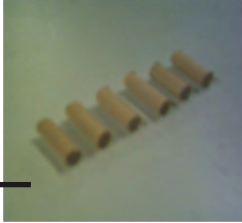
Note: Fold the Axe Bracket into the Configuration as shown above.

Panther Ausf G

Assembly Instructions

Tank Details - Left Side

Note: Mount two (2) of the Dowels into the holes in the Shovel Bracket.



(6) 1/4" x 1/2" long
Wooden Dowel
BRA003-805P

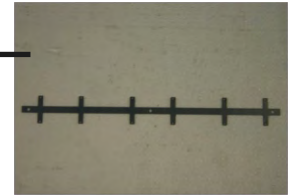
NOTE: Shape the Storage Tube Bracket to fit the shape of the Storage Tube and then secure the Tube to the side of the tank in the location shown using Pop Rivets



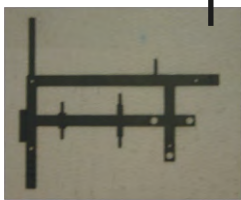
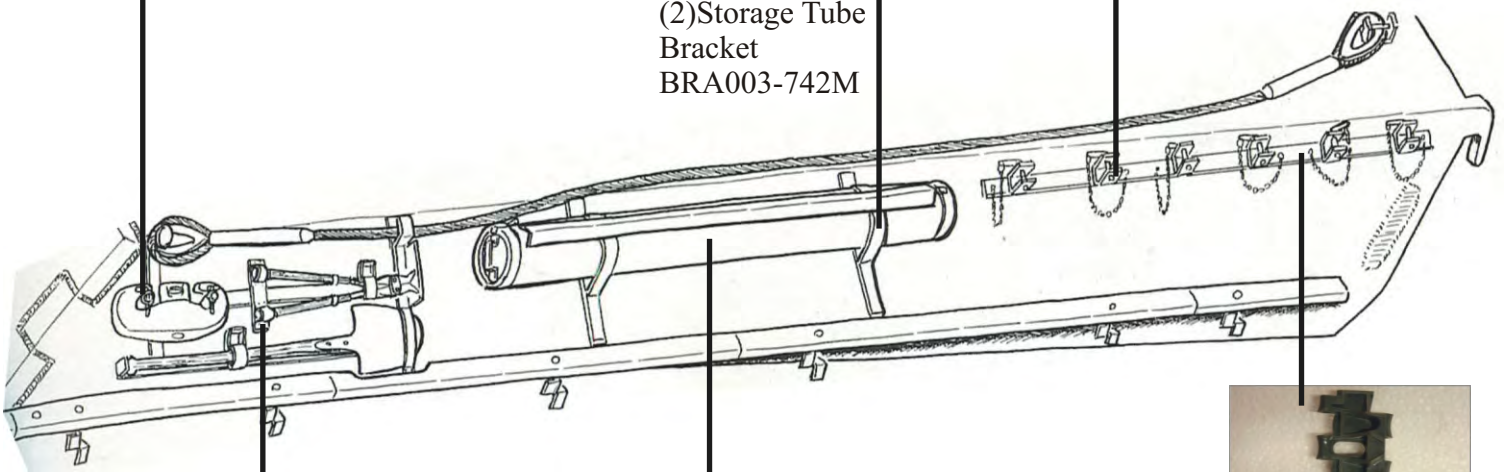
(2) Storage Tube
Bracket
BRA003-742M



Note: Fold the fins on the extra Track Bracket into the Configuration shown to the left.



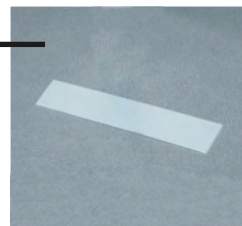
(1) Extra Track
Bracket
BRA003-741M



(1) Shovel Bracket
BRA003-740M

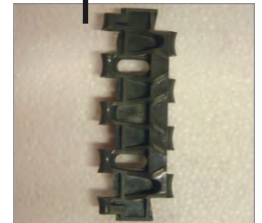


(1) Storage Tube
BRA003-602T



1 3/4" x 3 3/4" x 1/16"
Styrene
BRA003-811P

NOTE: Place the Storage Tube on end against the Styrene and trace the shape twice. Cut out the Circle patterns you have created and affix them to either end of the Storage Tube using Super Glue and then clean and smooth the joints.



(168) Track Link
BRA001-902P

Note: Place six tracks on the Track Bracket on each side of the tank (see Previous Page).



Note: Fold the Shovel Bracket into the Configuration as shown above. Secure in place with Pop Rivets.

NOTE: Only the Brackets and Resin Parts pictured here are provided with this kit. None of the Tow Cables, Tow Cable Connectors, Ropes or Tools are provided.